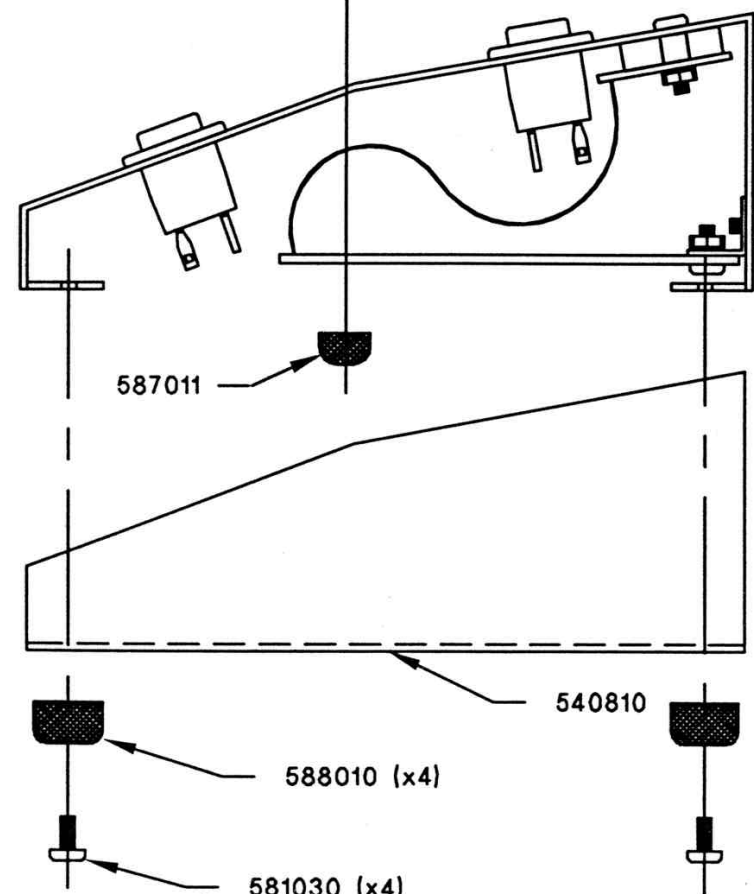
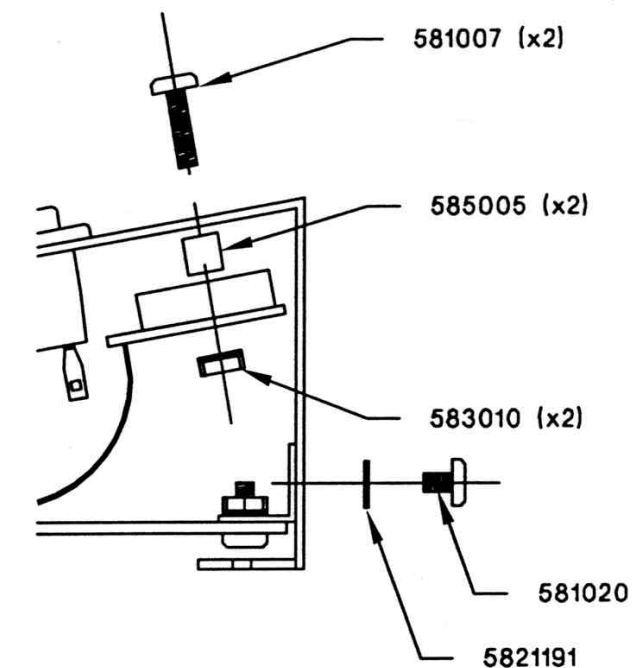
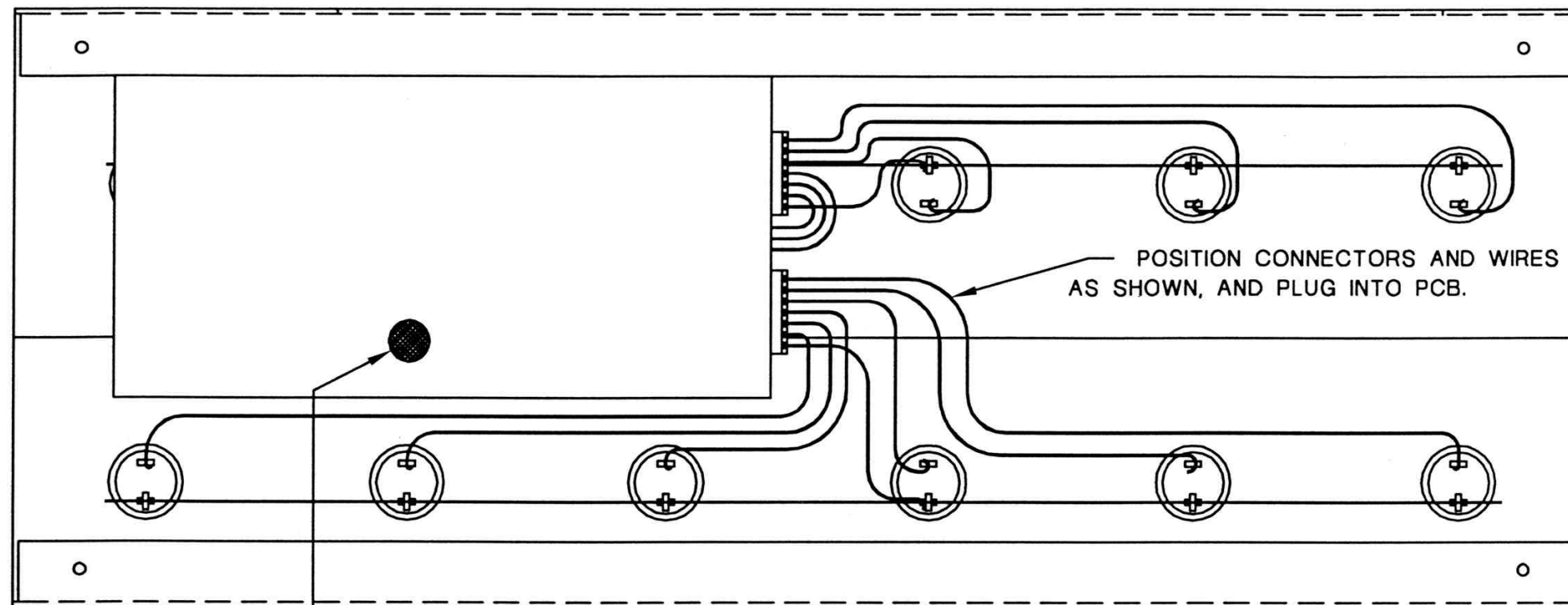


REVISION HISTORY

REV.	DESCRIPTION	SIGNATURE	DATE
A	RELEASED		8-8-94
-	-		-
-	-		-
-	-		-



581007 SCREW 6-32X5/8" SOCKET BUTTNHD BLK ZNC
 581020 SCREW 6-32X1/4" PHIL PNHD BLK ZNC
 581030 SCREW 6-32X3/8" PHIL PNHD TYPE F ZNC
 5821191 WASHR LOCK NO. 6 EXT TOOTH BLK ZNC
 583010 NUT KEP 6-32 SM PAT ZNC PL
 585005 SPACER NO. 6-3/16" NYLON
 587011 HDWR BUMPON 3M H3.5MM W12.7MM
 588010 HDWR FOOT RUBBER D=.250 H=.235

NOTES:

1. REMOVE THE PROTECTIVE PLASTIC SHEET FROM THE FRONT OF THE LED, AND INSTALL USING THE HARDWARE SHOWN.
2. MOUNT THE PCB INTO THE CHASSIS USING THE HARDWARE SHOWN FOR THE BRACKET AND THE JACKS.
3. PLUG THE IDS CONNECTORS ONTO THE PCB, AS SHOWN.
4. PLACE RUBBER BUMPER ON THE BOTTOM OF THE PCB.
5. MOUNT THE BOTTOM COVER WITH THE FEET AND HARDWARE SHOWN.

THIS DRAWING DOCUMENT CONTAINS INFORMATION WHICH IS PROPRIETARY TO AND THE PROPERTY OF ADA, INC. AND MAY NOT BE USED, REPRODUCED OR DISCLOSED IN ANY MANNER WITHOUT THE EXPRESSED CONSENT OF ADA, INC.

FILE NAME: A1003RA.DWG

CHECKED BY:

DATE:

APPROVED BY:

DATE:



SIGNAL PROCESSORS, INC.
 420 LESSER STREET, OAKLAND, CA 94601

TITLE

MPC FINAL ASSEMBLY (800213)

DRAWN: RON FARAR

ENGR:

© COPYRIGHT 1993

SIZE

A

DRAWING NO.

1003

DATE: 2-28-94

REV

A

SHEET 1 OF 1



<http://www.adadepot.com>