

Technical Manual



JBL4627A

SPECIFICATIONS

ACOUSTIC & ELECTRICAL SPECIFICATIONS:

- Nominal Impedance: 8 ohm
- Power Rating: 150W
Continuous Program: 300W
- Frequency Response: 35 Hz to 20 kHz
- Sensitivity: 98 dB SPL*
- Crossover Frequencies: 1.5 kHz

SYSTEM COMPONENTS:

- Cabinet: C4727A
- Grille: 59495-02
- Low Frequency Transducer: 380mm (15 in.) Cone Transducer (E145-8)

*1 Watt (2.83 V RMS) @ 1 Meter

SYSTEM COMPONENTS: (cont'd)

- High Frequency Transducer: 44mm (1-3/4 in.) Pure Titanium Diaphragm (2425J)
- Crossover Network: 3101A, High Pass Network

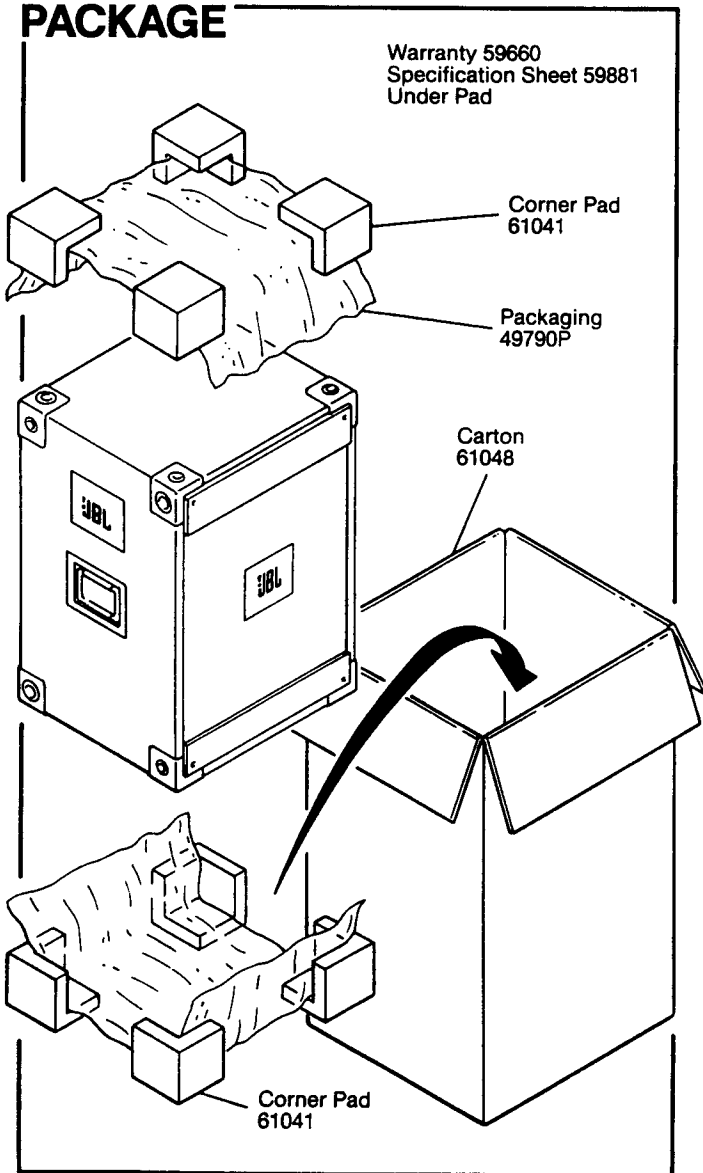
PHYSICAL SPECIFICATIONS:

- Enclosure Dimensions: 767mm x 512mm x 478mm D (30.18 x 20.12 x 18.18 in. D)
- Shipping Weight: 108.5 lbs. (49.2 kg)

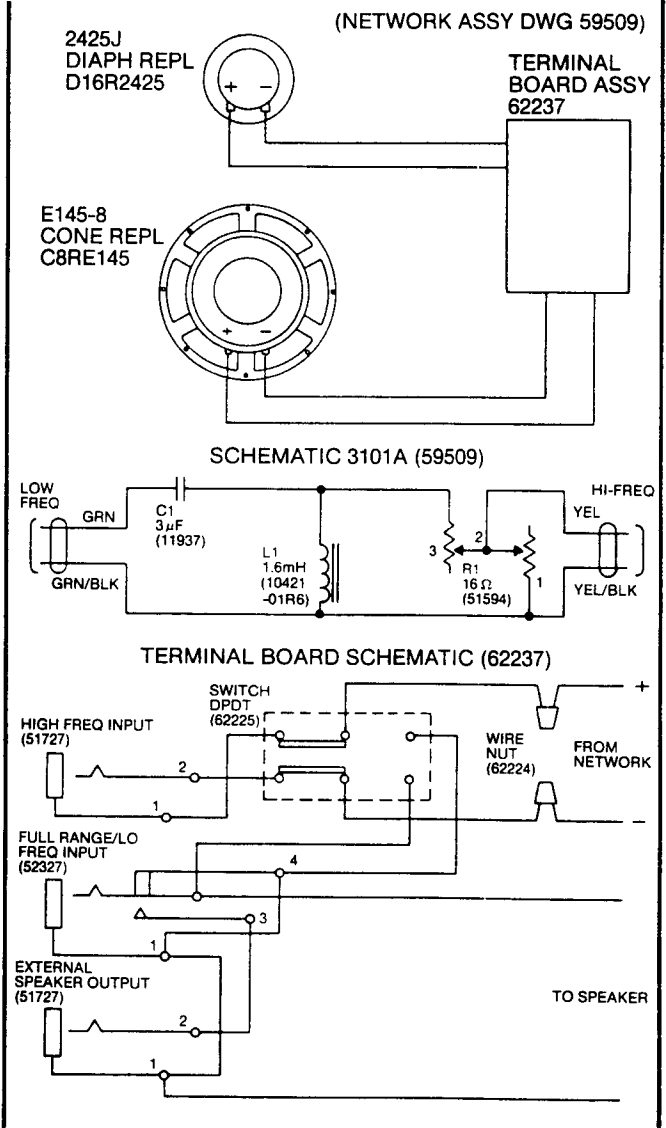
WARRANTY INFORMATION:

- Refer to the Warranty Statement packed with each product.

PACKAGE

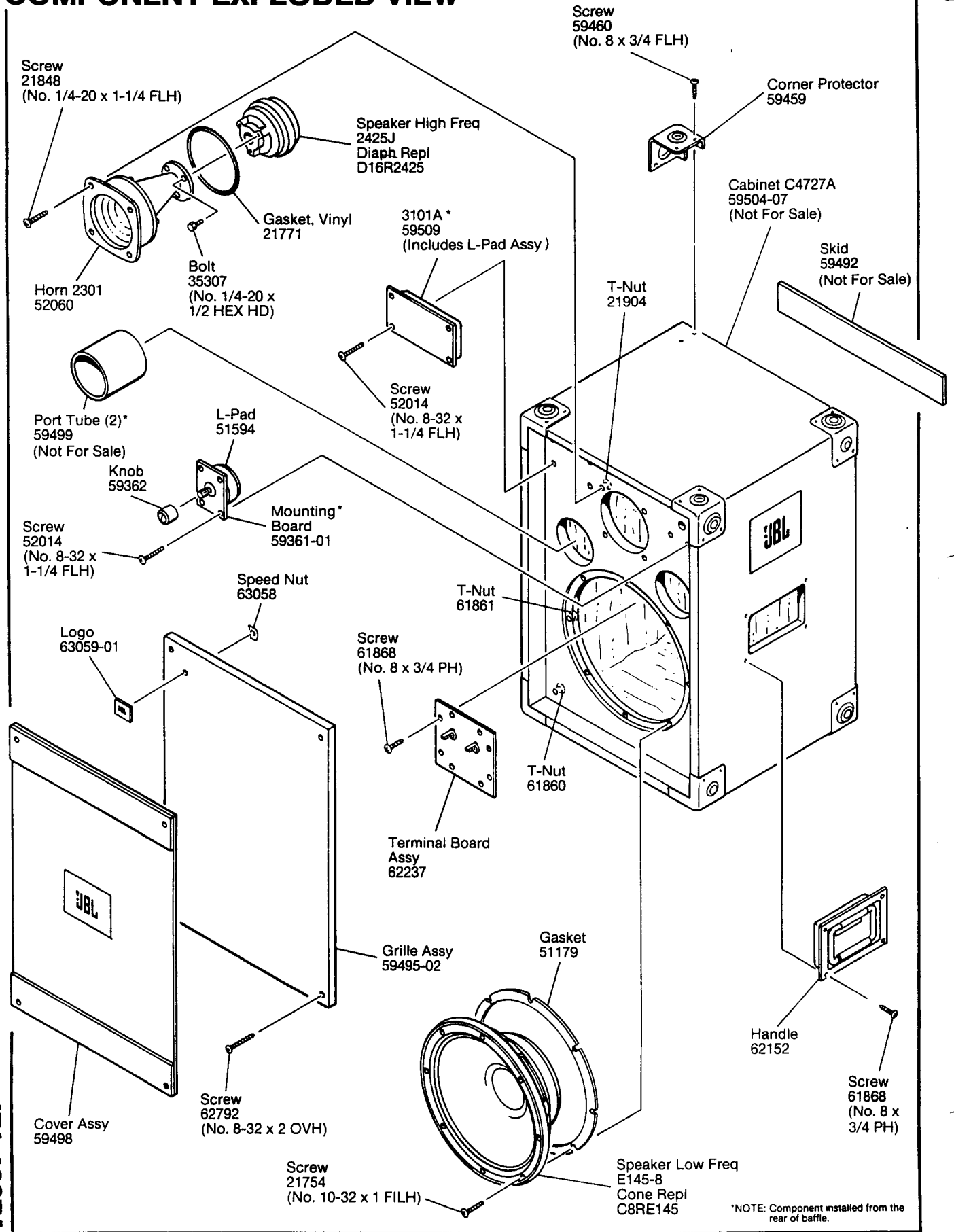


WIRING DIAGRAM



JBL4627A

COMPONENT EXPLODED VIEW



JBL4627A