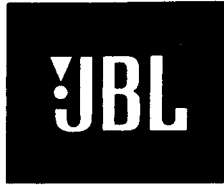


# Technical Manual



# JBL4728AP BI-RADIAL™ STAGE MONITOR SPEAKER SYSTEM

## SPECIFICATIONS

### ACOUSTIC & ELECTRICAL SPECIFICATIONS:

- Nominal Impedance: 8 ohm L.F., 16 ohm H.F.
- Power Rating: 600W IEC Rating
- Frequency Response: 70 Hz to 16 kHz ( $\pm 3$ dB)
- Sensitivity: 95 dB SPL\*
- Crossover Frequencies: 1200 Hz

### SYSTEM COMPONENTS:

- Cabinet: C4728A
- Grille: N/A
- Low Frequency Transducer: 300mm (12 in.) Cone Transducer (2206H)

\*1 Watt (2.83 V RMS) @ 1 Meter

### SYSTEM COMPONENTS: (cont'd)

- High Frequency Transducer: 25mm (1 in.) Pure Titanium Diaphragm Compression Driver (2426J)
- Crossover Network: N4728A - N4728AP

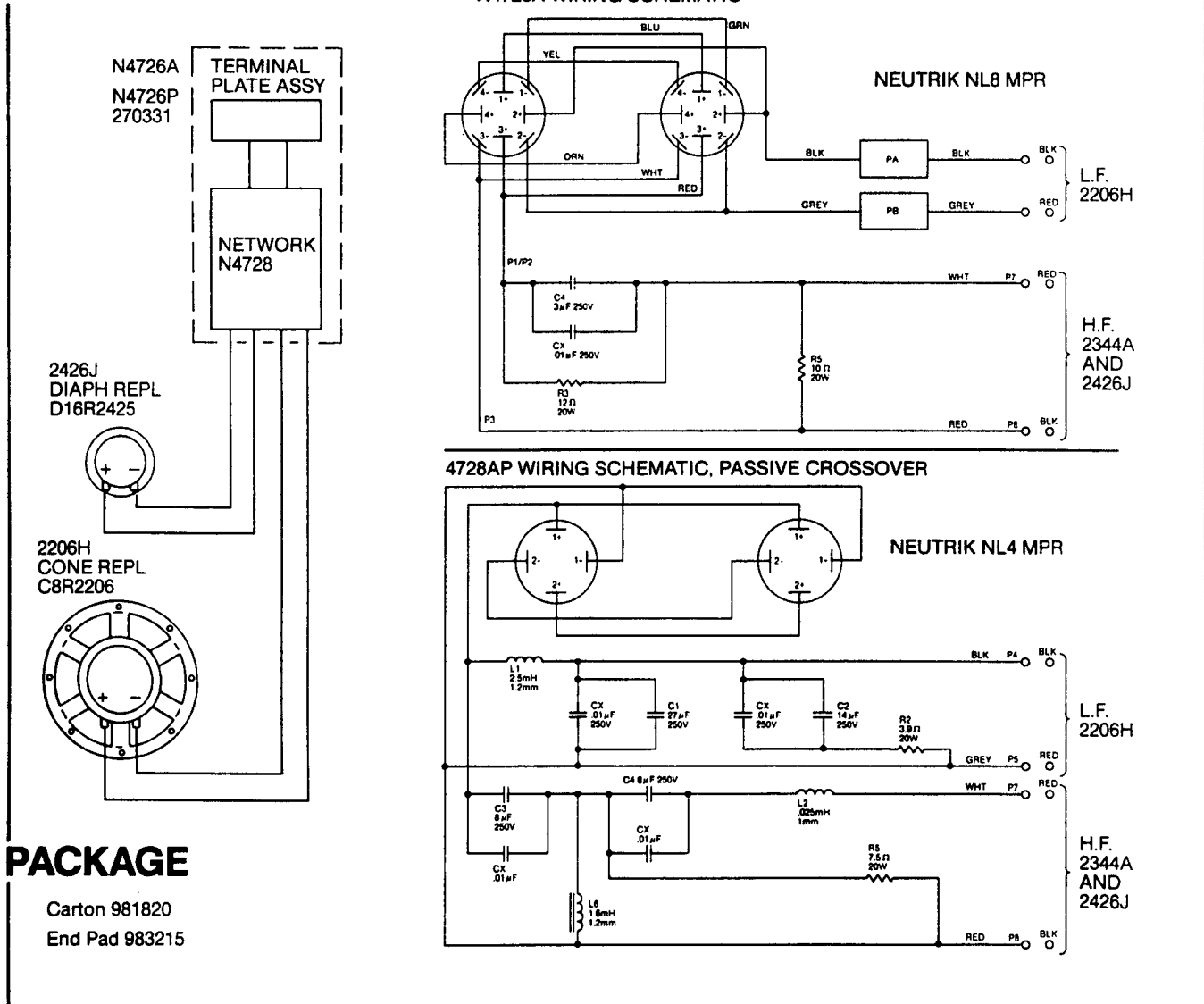
### PHYSICAL SPECIFICATIONS:

- Enclosure Dimensions: 646mm x 438mm x 302mm D (25.43 x 17.25 x 11.81 in. D)
- Shipping Weight: 48 lbs. (22 kg)

### WARRANTY INFORMATION:

- Refer to the Warranty Statement packed with each product.

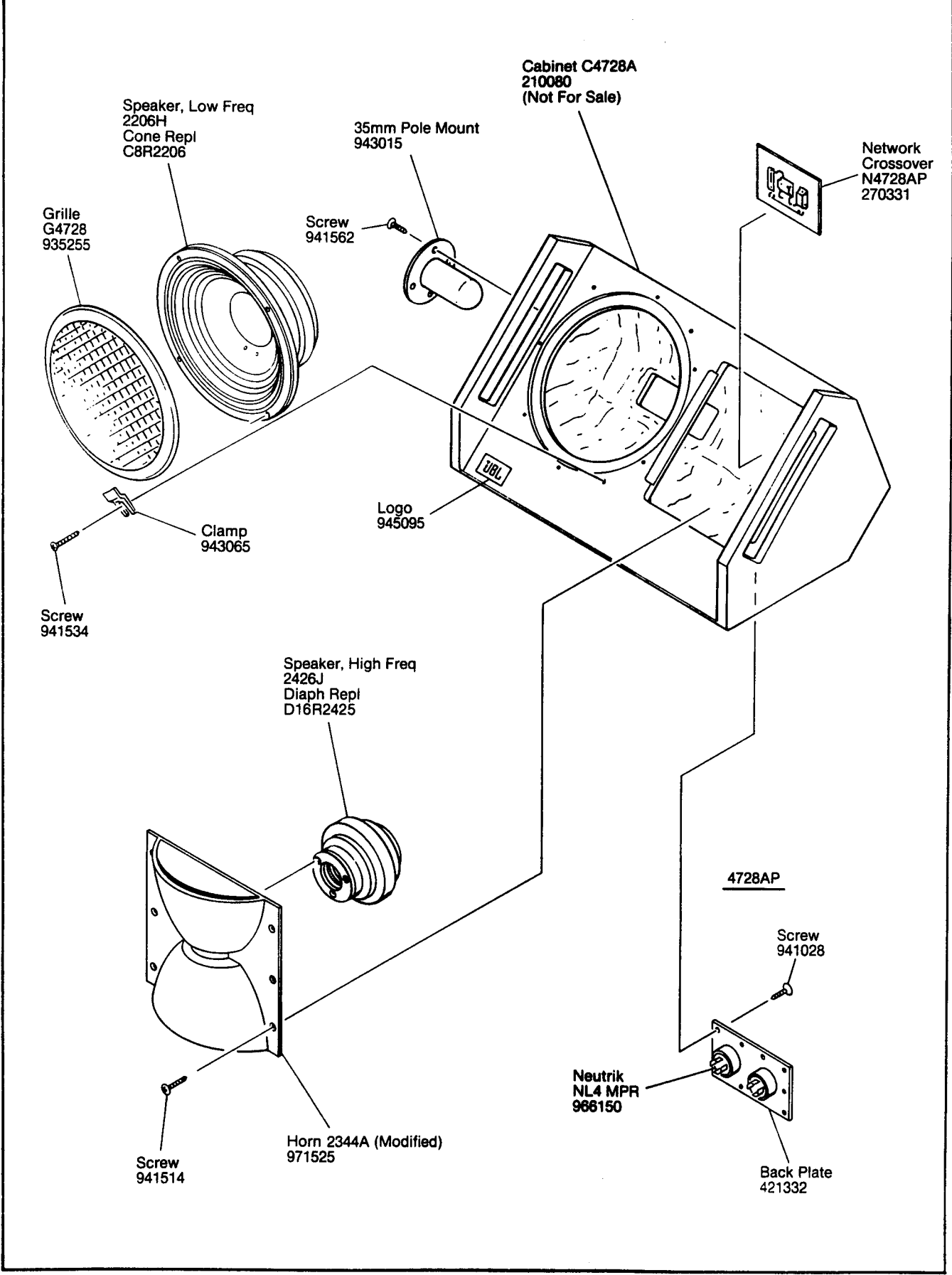
## WIRING DIAGRAM



JBL4728AP REV A

# JBL4728AP

## COMPONENT EXPLODED VIEW



JBL4728AP