

Technical Manual

JBL4788A DUAL 460 MM (18") TRIPLE CHAMBER BANDPASS™ SUB-BASS SYSTEM



SPECIFICATIONS

ACOUSTIC & ELECTRICAL SPECIFICATIONS:

- Nominal Impedance: 4 ohm
- Power Rating: Continuous Program: 1200W
- Frequency Response: 25 Hz to 150 Hz (±3dB)
- Sensitivity: 101 dB SPL*
- Crossover Frequencies: 80 Hz to 100 Hz, 20 Hz Low Cut

SYSTEM COMPONENTS: (cont'd)

- Low Frequency Transducer: 460mm (18 in.) Cone Transducer (2240H) (2)
- Crossover Network: JBL/UREI 5235 Active Crossover 53-5334 Crossover Card

SYSTEM COMPONENTS:

- Cabinet: C4788A
- Grille: N/A

PHYSICAL SPECIFICATIONS:

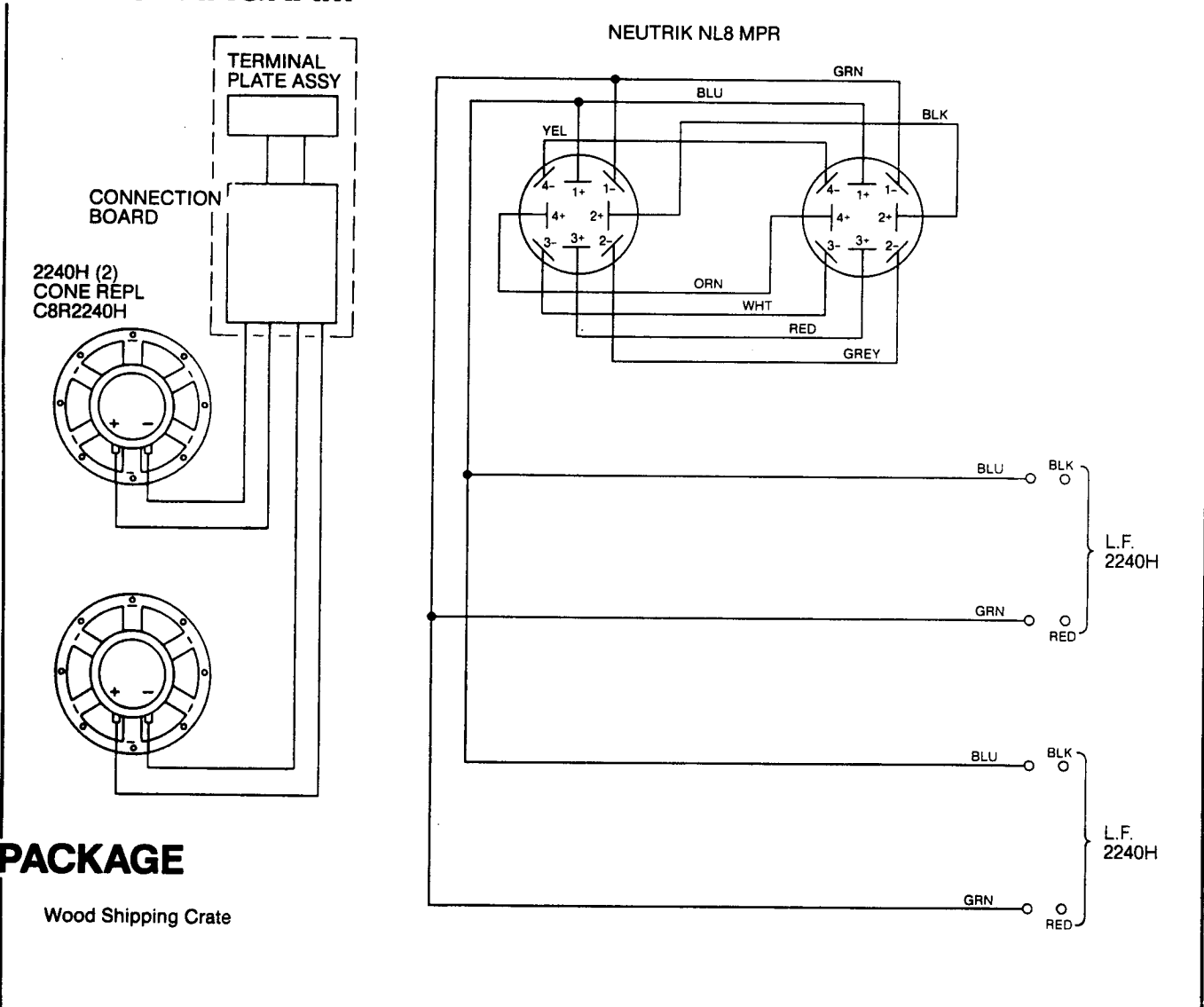
- Enclosure Dimensions: 750mm x 1500mm x 800mm D (29.5 x 59.0 x 31.5 in. D)
- Shipping Weight: 268 lbs. (122 kg)

WARRANTY INFORMATION:

- Refer to the Warranty Statement packed with each product.

*1 Watt (2.83 V RMS) @ 1 Meter

WIRING DIAGRAM



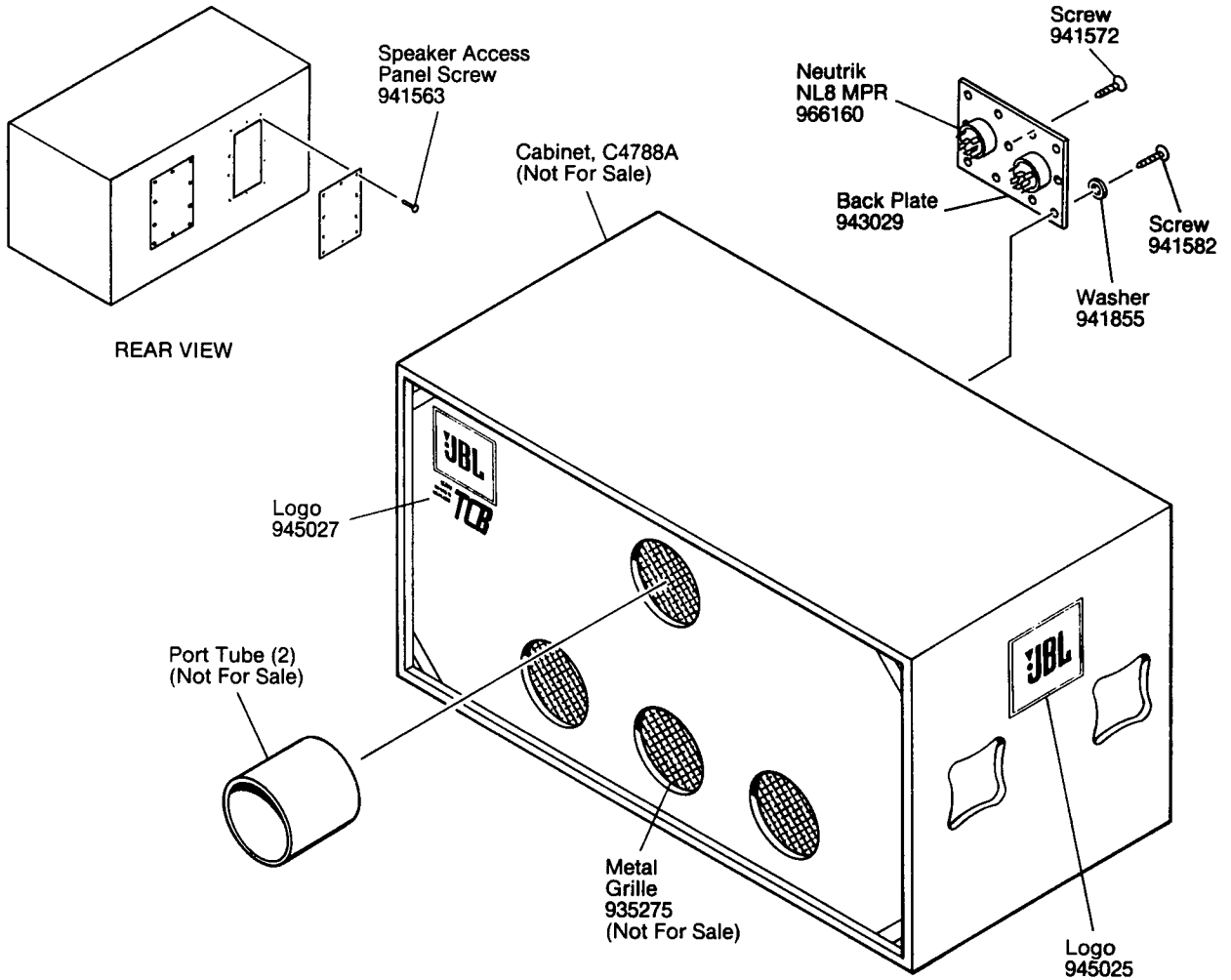
PACKAGE

Wood Shipping Crate

JBL4788A REV A

JBL4788A

COMPONENT EXPLODED VIEW



Note:
Orientation of
Speakers in Cabinet

