

# Technical Manual

# JBL M330



## SPECIFICATIONS

### ACOUSTIC & ELECTRICAL SPECIFICATIONS:

- Nominal Impedance: 8 ohms
- Power Rating: 350 Watts IEC
- Frequency Response: (-10 dB) 45 Hz - 18 KHz
- Sensitivity: 99 dB\*
- Crossover Frequency: 1250 Hz

### SYSTEM COMPONENTS:

- Cabinets: CM330
- Grille: GM330
- Low Frequency Transducer: 300 mm (12 Inch) CONE

### SYSTEM COMPONENTS: (cont'd)

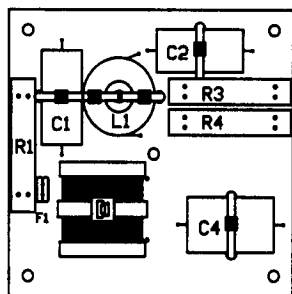
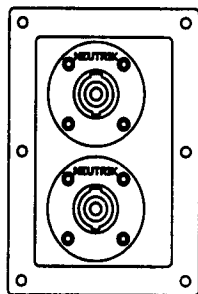
- High Frequency Transducer: 25 mm (1 Inch) Pure Titanium Diaphragm
- Crossover Network: NM330

### PHYSICAL SPECIFICATIONS:

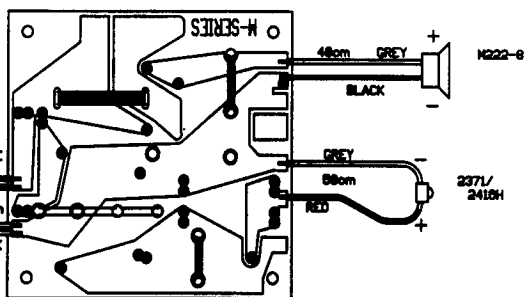
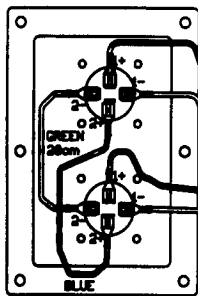
- Enclosure Dimensions: 700 x 460 x 390 (D) mm  
27,6 x 18,1 x 15,4 (D) Inch
- Shipping Weight: 35 Kg  
77,4 lbs

\*1 Watt (2,83 V RMS) @ 1 Meter

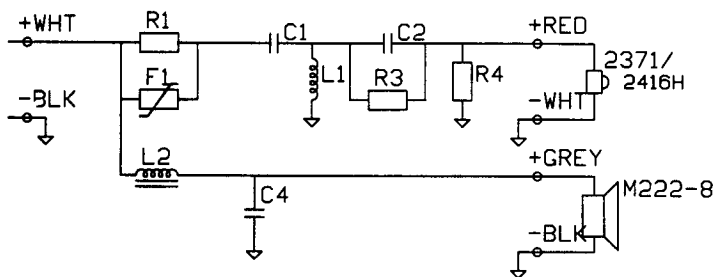
## WIRING DIAGRAM



- F1 FUSE MF-R090 968090 2 PCS
- R1 3,9 ohm/20W 964501
- R3 3,9 ohm/20W 964501
- R4 6,8 ohm/20W 964503
- C1 8 uF/250V 963605
- C2 12 uF/250V 963609
- C4 10 uF/250V 963607
- L1 0,75mH/0,8mm 965123
- L2 2,2mH/1,2mm 965556



**SCHMATIC M330**



## PACKAGE

CARTON  
981750

**JBL M330**

# JBL M330

## COMPONENT EXPLODED VIEW

