

REV 1B JULY 9, 02  
ADDED R60A TO MAIN BOARD  
REV 1A JUNE 24, 02

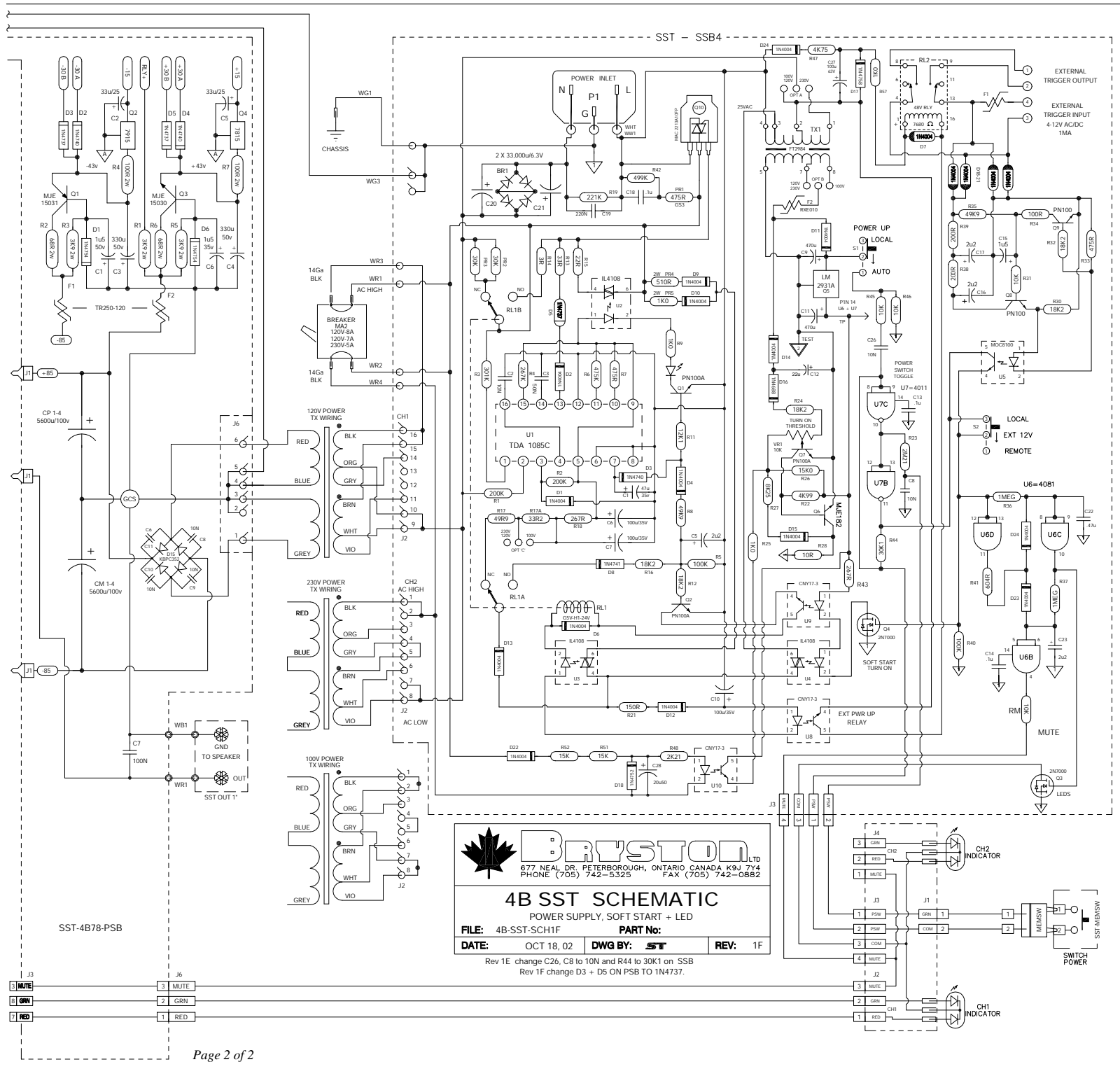
CHANGED R16, 33, 34 + 36 TO 301R ECO 616  
Rev 1E change C26, C8 to 10N and R44 to 30K1 on SSS  
Rev 1F change D3 + D5 ON PSB TO 1N4737.

**BRUSTON LTD**  
677 NEAL DR. PETERBOROUGH, ONTARIO CANADA K9J 7Y4  
PHONE (705) 742-5325 FAX (705) 742-0882

## 4B SST SCHEMATIC

INPUT - MAIN - POWER AMP

FILE: 4B-SST-SCH1F      PART No:   
DATE: OCT 18, 2002    DWG BY: ST      REV: 1F



**BRVSTON LTD**  
 877 NEAL DR. PETERBOROUGH, ONTARIO CANADA K9J 7Y4  
 PHONE (705) 742-5325 FAX (705) 742-0882

**4B SST SCHEMATIC**  
 POWER SUPPLY, SOFT START + LED  
**FILE:** 4B-SST-SCH1F **PART No:**  
**DATE:** OCT 18, 02 **DWG BY:** ST **REV:** 1F

Rev 1E change C26, C8 to 10N and R44 to 30K1 on SSB  
 Rev 1F change D3 + D5 ON PSB TO 1N4737.