

Rx	-1%
50Hz	33.2K
60	27.4K
70	23.2K
80	20K
90	16.8K
100	15.0K

3 → V-
4 → V+
5 → G

- OA1 - RC4558
- OA2 - TL072
- OA3 - RC4558
- OA4 - LM301
- OA5 - LM301

5, 6, 8 connected externally

DBX 100'
Subharmonic synth divider board.

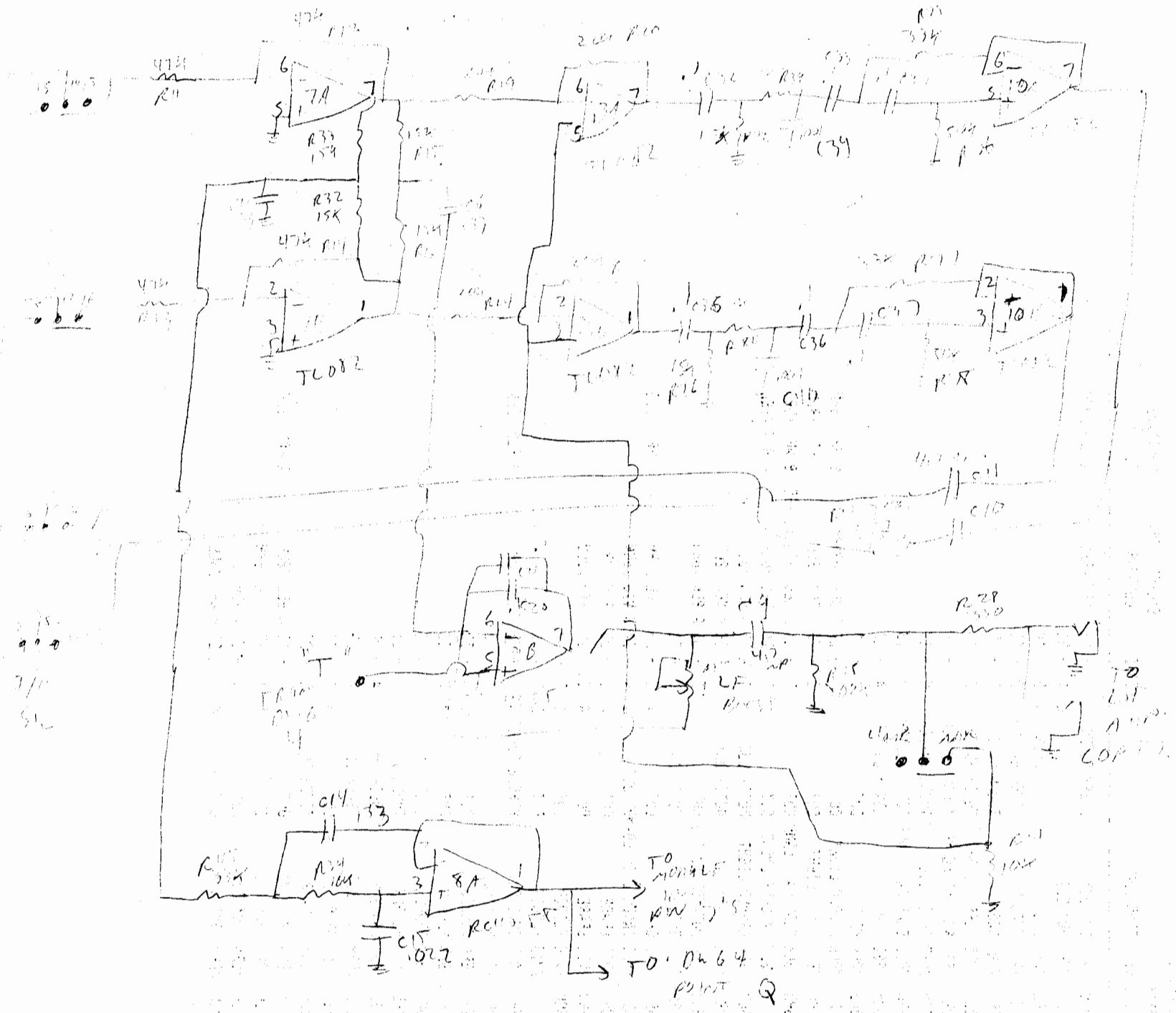
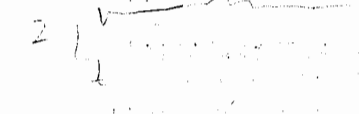
Dec 30, 1988
Dan Frasen
Vancouver, B.C.

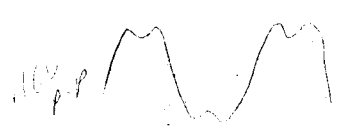
Every other half cycle is inverted.



Q=42725

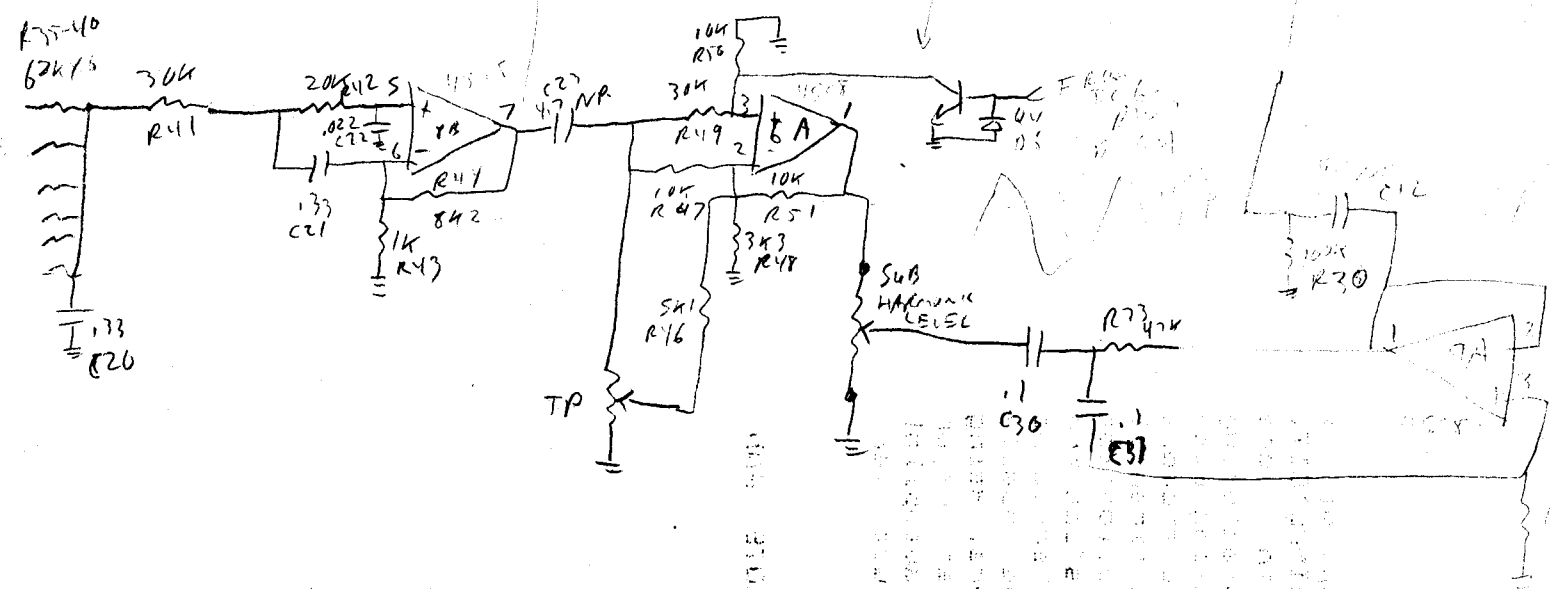
IN





Q1 on
output o/p

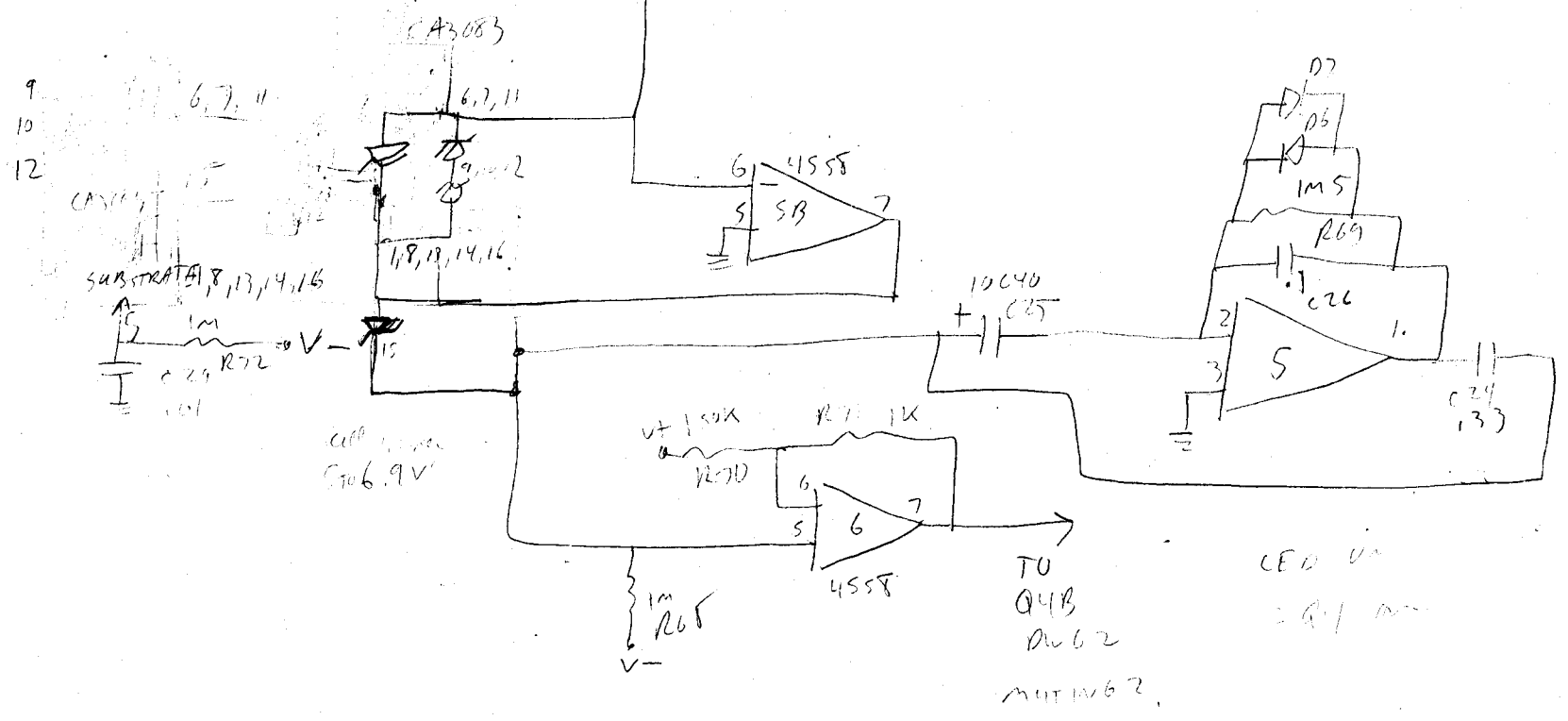
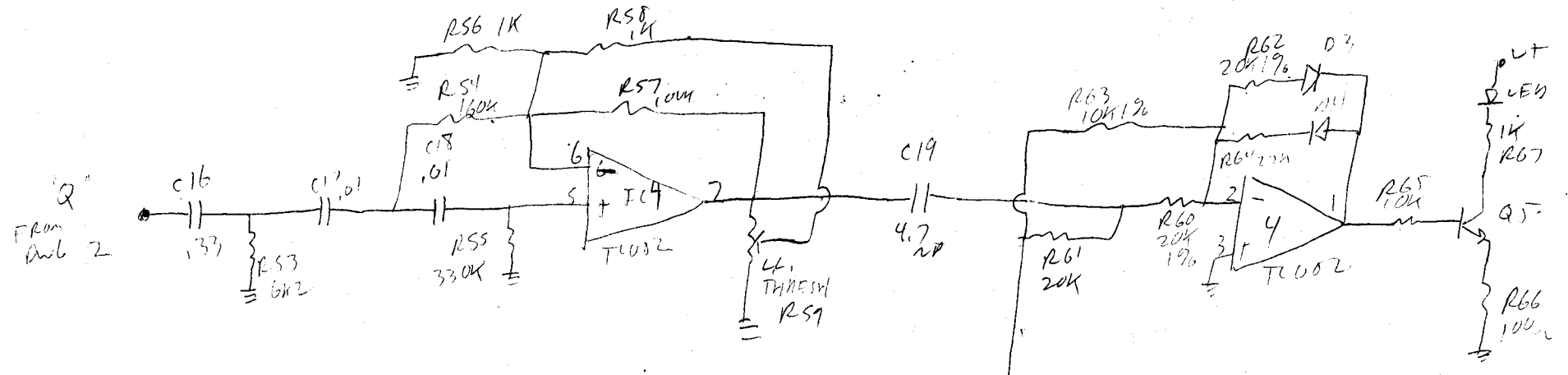
→ 1st Pin
2
"T"

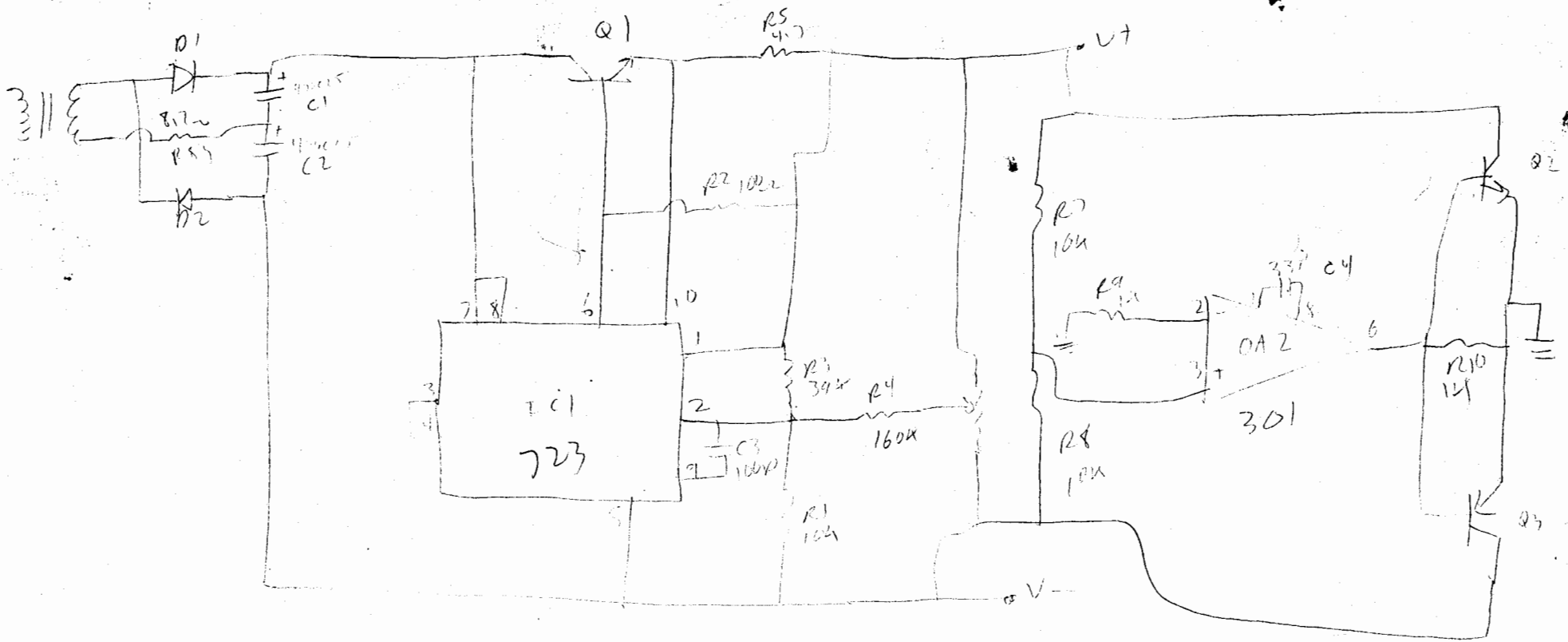


Q4 on when
Lead is on

RECEIVED
MAY 19 1964
COMMUNICATIONS SECTION
NAVY DEPARTMENT
WASHINGTON, D.C.

3





dbx 100 P.S.

5

dbx 100

Block Diagram

