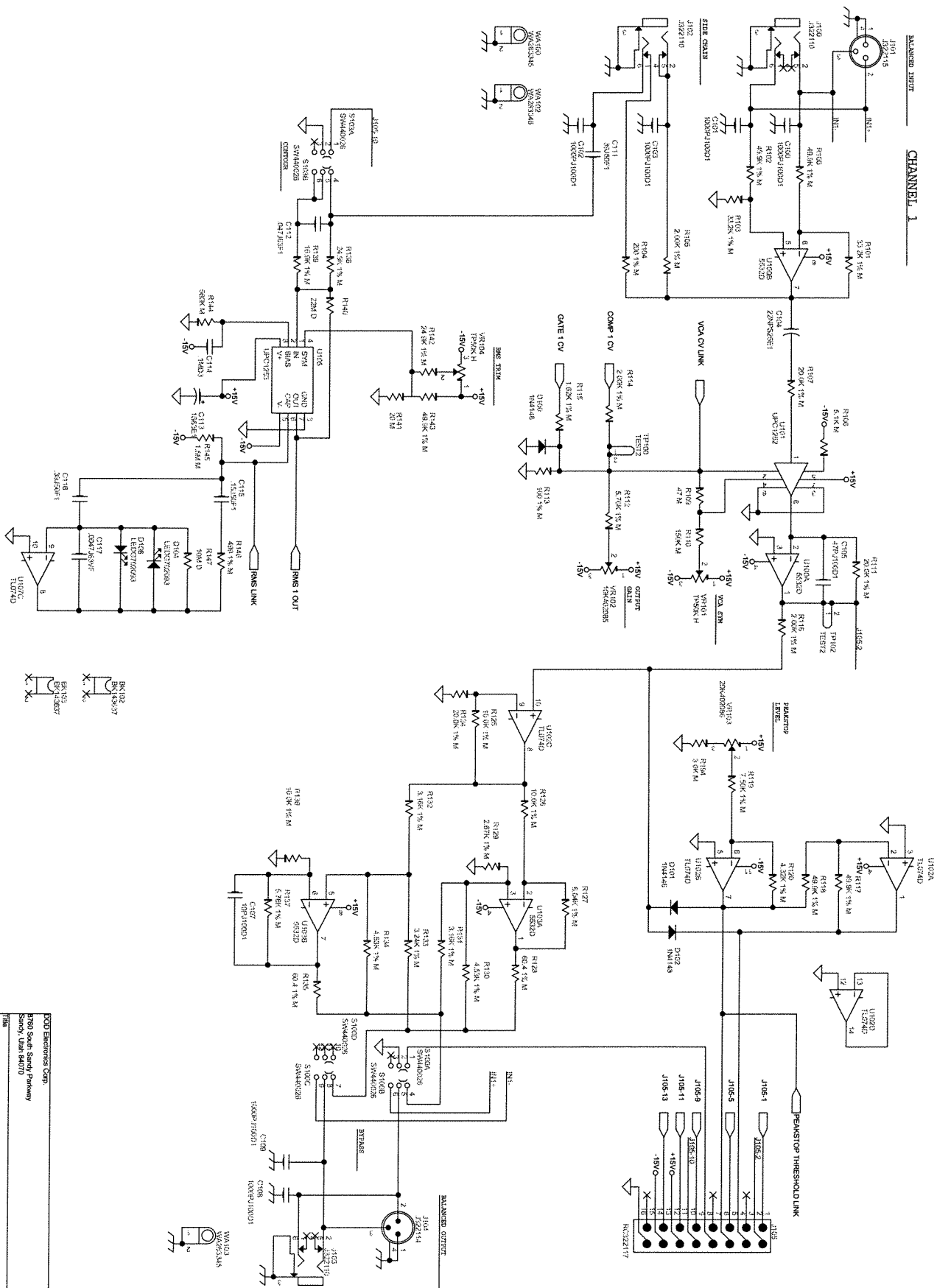
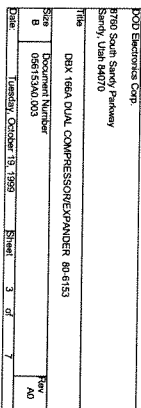


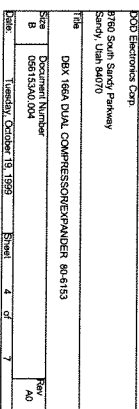
[illegible]

FOD Electronics Corp.	
8700 South Sandy Parkway	
Sandy, Utah 84070	
Title	
DBA 1654 DUAL COMPRESSOREXPANDER	
Size	Document Number
B	056153A0 001
Date	Tuesday, October 19, 1999
Sheet	1 of 7
	Rev. 40



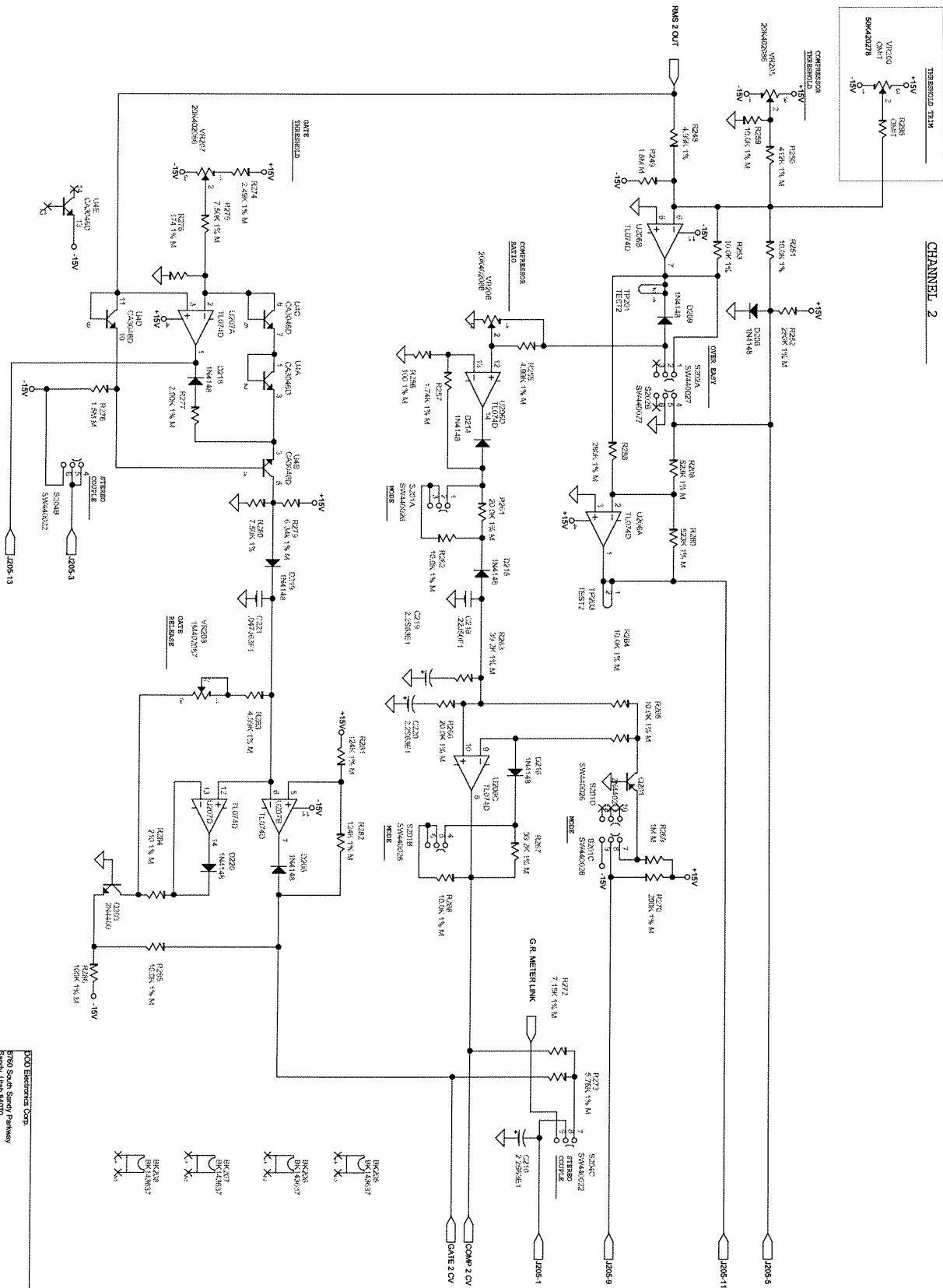
KDD Electronics Corp.	
P780 South Sandy Parkway	
Sandy, Utah 84070	
Title	
DBX 160A DUAL COMPRESSOR/EXPANDER 80-6183	
Document Number	
B 096153A01.002	
Date	
Tuesday, October 19, 1995	
Sheet	
2 of 7	



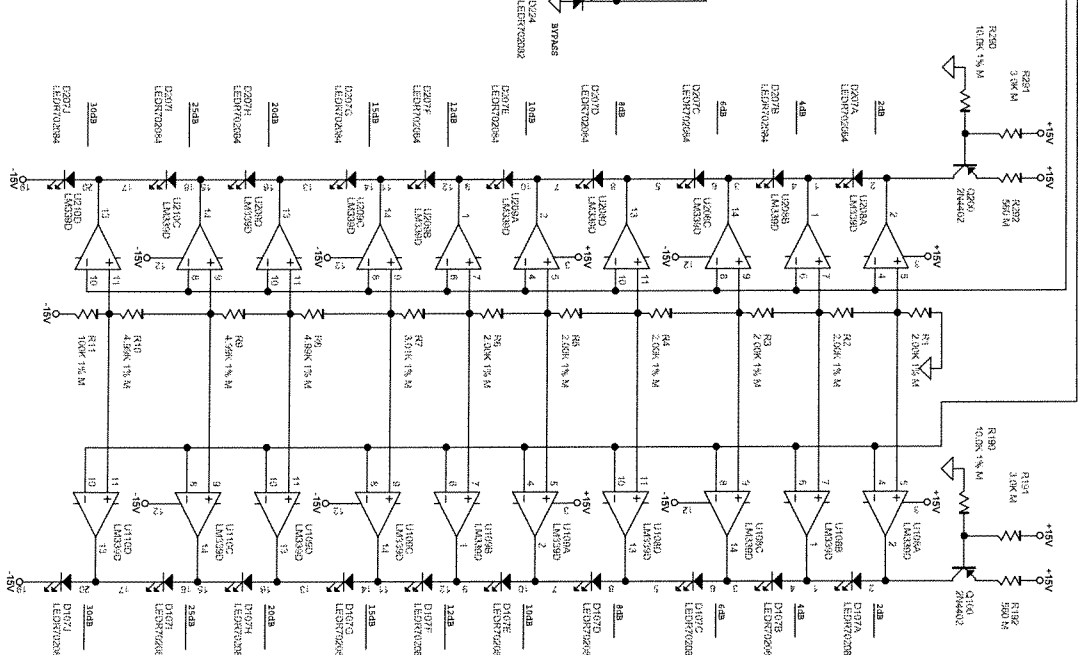
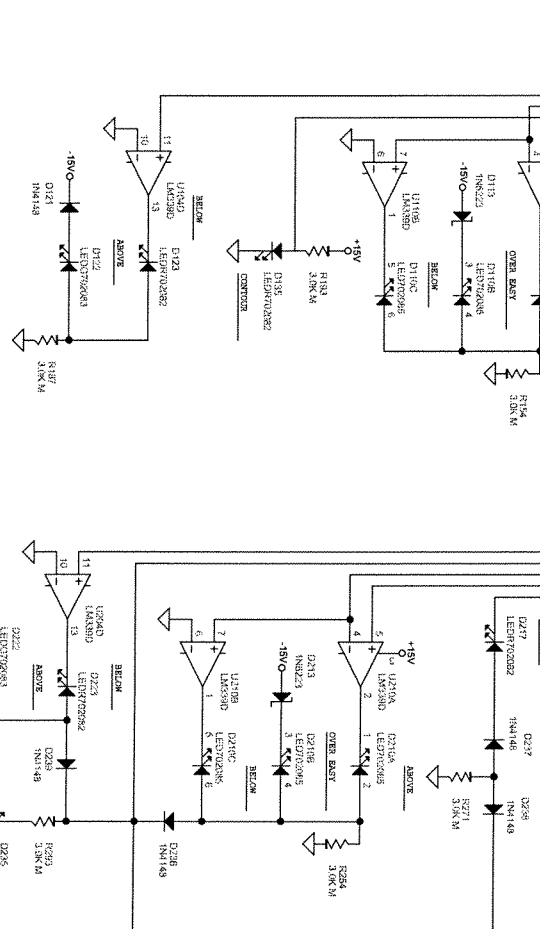
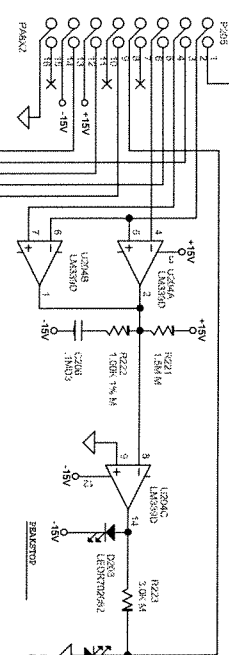
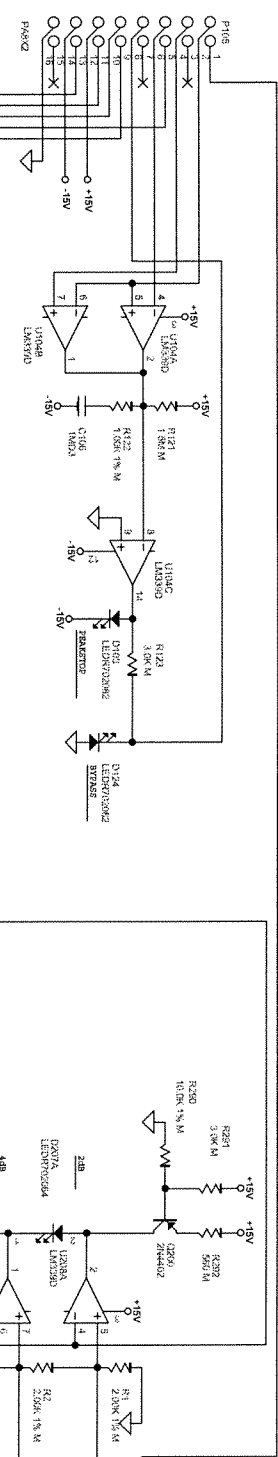
BALANCED INPUT

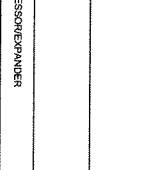
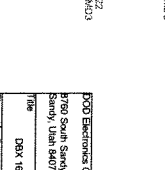
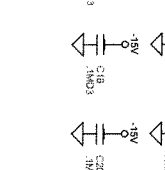
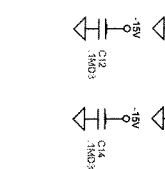
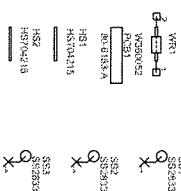
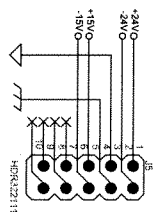
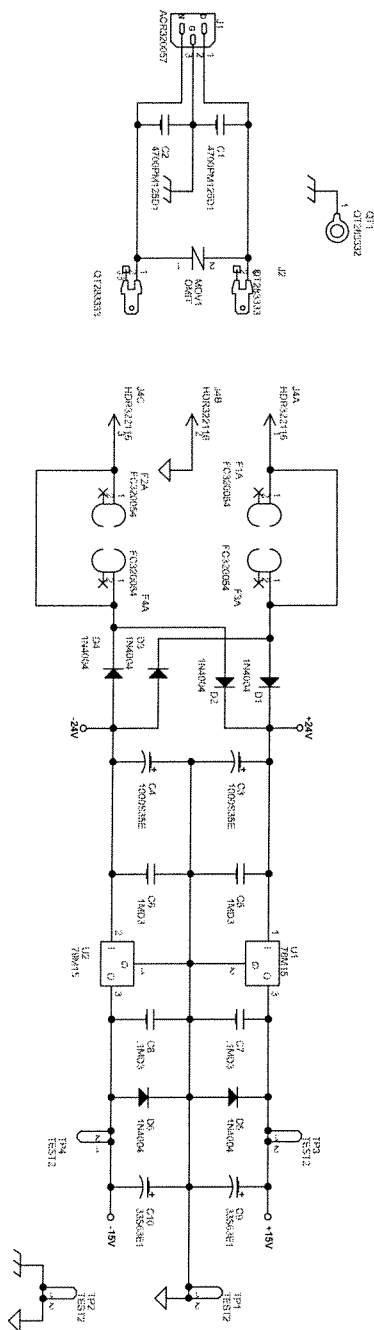
OPTIONAL

CHANNEL 2



DBX Electronics Corp.	
7700 South Sandy Parkway	
Sandy, Utah 84070	
Title	
DBX 166A DUAL COMPRESSOR/EXPANDER 80-6153	
Size	
B	
Drawing Number	
095153A0.005	
Date	
Tuesday, October 15, 1991	
Sheet	
5	
of	
7	





FDB Electronics Corp.	
3760 South Sandy Parkway	
Sandy, Utah 84070	
DBX 16A DUAL COMPRESSOR/EXPANDER	
DocuPrint Number	40
DocuPrint Number	00615340.007
Date	Tuesday, October 13, 1993
Sheet	7 of 7

DBX 166A DUAL COMPRESSOR/EXPANDER
 056153A0.001
 Bill Of Materials
 May 9, 2000
 SYMAN
 Description

12	BK102,BK103,BK105,BK106, BK107,BK108,BK202,BK203, BK205,BK206,BK207,BK208	BK143637	14-3637-A	PLTWT, BRKT, Switch MTG
2	C1,C2	4700PM12SD		
2	C3,C4	1000S35E	60-0063	1000 uF Cap 35V -20/+80% Elect
20	C5,C6,C7,C8,C11,C12,C13, C14,C15,C16,C17,C18,C19, C20,C21,C22,C106,C114, C206,C214	.1MD3	62-0060	.1 uF Cap 50V 20% Ceramic AXL
2	C9,C10	33S63E1	60-0324	33 uF Cap 63V Alum, Rad
12	C100,C101,C102,C103,C108, C109,C200,C201,C202,C203, C208,C209	1000PJ100D		
2	C104,C204	22NPS25E1		
2	C105,C205	47PJ100D1		
2	C107,C207	10PJ100D1		
6	C110,C119,C120,C210,C219, C220	2.2S63E1	60-0323	2.2 uF Cap 63V Alum Rad T&R
4	C111,C116,C211,C216	.39J50F1	56-4010	.39 uF Cap 50V 5% M/Plyes Rad Stkd Film T&R
4	C112,C121,C212,C221	.047J63F1	56-3102	.047 uF Cap 63V 5% M/Plyes Rad T&R
2	C113,C213	1S63E1	60-0316	.1 uF Cap 63V -20/+100% Alum Rad T&R
2	C115,C215	.15J50F1	56-4012	.15 uF Cap 50V 5% M/Plyes Rad Stkd Film T&R
2	C117,C217	.0047J63VF		
2	C118,C218	.22J50F1	56-4013	.22 uF Cap 50V 5% M/Plyes Rad Film
6	D1,D2,D3,D4,D5,D6	1N4004	70-0009	1N4004 Rect 1A 400V
30	D100,D101,D102,D105,D108, D109,D114,D115,D116,D118, D119,D120,D121,D200,D201, D202,D205,D208,D209,D214, D215,D216,D218,D219,D220, D221,D236,D237,D238,D239	1N4148	70-0002	1N4148 Diode Silicon Switching, 75 Volts PIV
10	D103,D117,D123,D124,D135, D203,D217,D223,D224,D235	LED702082	70-2082	Red Light Emitting Diode, T1 Encap, w/housing
4	D104,D106,D204,D206	LED702093	70-2093	Green Light Emitting Diode, T1
2	D107,D207	LED702084	70-2084	Red Light Emitting Diode, T1 Encap, 10 pos
2	D110,D210	LED702085	70-2085	R/Y/G Light Emitting Diode, T1, LMx, 3 pos
2	D113,D213	1N5223	70-0041	1N5223 Diode Zener Glass, 1/2W, 50V, 10%
2	D122,D222	LED702083	70-2083	Green Light Emitting Diode, T1 Encap, w/housing
4	F1,F2,F3,F4	FC320054	32-0054	Fuse Clip, PC Mount
2	H51,H52	HS704215	70-4215	Heatsink, PCB Mount, Vert., for TO-220
1	J1	ACR320057	32-0057	AC Power Receptical, IEC, Non filtered
2	J2,J3	QT283333	28-3333	Quick-tab, Terminal, PC Mount, 2 Pin
1	J4	HDR322116	32-2116	3 Pin Hdr, Straight, .23", 0.1" spacing
1	J5	HDR322111	32-2111	10 Pin Hdr, 5X2, Straight, .23", 0.1" spacing
6	J100,J102,J103,J200,J202, J203	J322110	32-2110	Jack, 1/4" Phone, PC Mount, Hor., Cliff S2
2	J101,J201	J322115	32-2115	XLR, Female PC Mount, Ins, R/A
2	J104,J204	J322114	32-2114	XLR, Male PC Mount, Ins, R/A
2	J105,J205	RC322117	32-2117	16 Pin Ribbon Cable, Flat, w/2 ends, 5.00", 0.1" spacing
5	MOV1,VR100,R188,VR200, R295	OMIT	00-0000	This part has been omitted
2	P105,P205	PA8X2	00-0000	8X2 Pin Pad Pattern, Not a part
DOD Software				
DBX 166A DUAL COMPRESSOR/EXPANDER				
056153A0.001				
Bill Of Materials				
May 9, 2000				
Revised: October 1, 1994				
Revision: A0				
11:13:11				
Page				

1	PCB1	80-6153-A	80-6153-A	dbx 166 MAIN/DISPLAY PCB, RAW					
4	Q100, Q101, Q200, Q201	2N4402	70-1035	2N4402 PNP, TR SIGNAL					
2	Q103, Q203	2N4400	70-1041	2N4400 NPN, TR SIGNAL					
1	Q11	Q1283332	28-3332	Quick-tab, Terminal, Crimp, Ring, Ins, 6R					
14	R1, R2, R3, R4, R5, R6, R105, R114, R116, R177, R205, R214, R216, R277	2.00K 1% M	52-1624	2.00 Kohm Resistor 1% 1/8	Watt	Carbon	Film	Mini	
1	R7	3.01K 1% M	52-1625	3.01 Kohm Resistor 1% 1/8	Watt	Carbon	Film	Mini	
9	R8, R9, R10, R148, R155, R183, R248, R255, R283	4.99K 1% M	52-1616	4.99 Kohm Resistor 1% 1/8	Watt	Carbon	Film	Mini	
3	R11, R186, R286	100K 1% M	52-1635	100 Kohm Resistor 1% 1/8	Watt	Carbon	Film	Mini	
10	R100, R102, R117, R118, R143, R200, R202, R217, R218, R243	49.9K 1% M	52-1620	49.9 Kohm Resistor 1% 1/8	Watt	Carbon	Film	Mini	
4	R101, R103, R201, R203	33.2K 1% M	52-1650	33.2 Kohm Resistor 1% 1/8	Watt	Carbon	Film	Mini	
2	R104, R204	200 1% M	52-1618	200 Ohm Resistor 1% 1/8	Watt	Carbon	Film	Mini	
2	R106, R206	5.1K M	50-0409	5.1 Kohm Resistor 5% 1/8	Watt	Carbon	Film	Mini	
10	R107, R111, R124, R161, R166, R207, R211, R224, R261, R266	20.0K 1% M	52-1630	20.0 Kohm Resistor 1% 1/8	Watt	Carbon	Film	Mini	
4	R108, R160, R208, R260	523K 1% M	52-1610	523 Kohm Resistor 1% 1/8	Watt	Carbon	Film	Mini	
2	R109, R209	47 M	50-0406	47 Ohm Resistor 5% 1/8	Watt	Carbon	Film	Mini	
2	R110, R210	150K M	50-0402	150 Kohm Resistor 5% 1/8	Watt	Carbon	Film	Mini	
6	R112, R137, R173, R212, R237, R273	5.76K 1% M	52-1617	5.76 Kohm Resistor 1% 1/8	Watt	Carbon	Film	Mini	
6	R113, R156, R213, R256, R288, R297	100 1% M	52-1639	100 Ohm Resistor 1% 1/8	Watt	Carbon	Film	Mini	
2	R115, R215	1.62K 1% M	52-1642	1.62 Kohm Resistor 1% 1/8	Watt	Carbon	Film	Mini	
6	R119, R175, R180, R219, R275, R280	7.50K 1% M	52-1649	7.50 Kohm Resistor 1% 1/8	Watt	Carbon	Film	Mini	
2	R120, R220	4.32K 1% M	52-1646	4.32 Kohm Resistor 1% 1/8	Watt	Carbon	Film	Mini	
8	R121, R145, R149, R178, R221, R245, R249, R278	1.5M M	50-0404	1.5 Mohm Resistor 5% 1/8	Watt	Carbon	Film	Mini	
2	R122, R222	1.00K 1% M	52-1623	1.00 Kohm Resistor 1% 1/8	Watt	Carbon	Film	Mini	
14	R123, R154, R171, R187, R191, R193, R194, R223, R254, R271, R287, R291, R293, R294	3.0K M	50-0405	3.0 Kohm Resistor 5% 1/8	Watt	Carbon	Film	Mini	
25	R125, R126, R136, R151, R153, R159, R162, R164, R165, R168, R185, R190, R225, R226, R236, R251, R253, R259, R262, R264, R265, R268, R285, R290, R296	10.0K 1% M	52-1627	10.0 Kohm Resistor 1% 1/8	Watt	Carbon	Film	Mini	
2	R127, R227	6.04K 1% M	52-1647	6.04 Kohm Resistor 1% 1/8	Watt	Carbon	Film	Mini	
4	R128, R135, R228, R235	60.4 1% M	52-1638	60.4 Ohm Resistor 1% 1/8	Watt	Carbon	Film	Mini	
2	R129, R229	2.67K 1% M	52-1645	2.67 Kohm Resistor 1% 1/8	Watt	Carbon	Film	Mini	
4	R130, R134, R230, R234	4.53K 1% M	52-1604	4.53 Kohm Resistor 1% 1/8	Watt	Carbon	Film	Mini	
4	R131, R132, R231, R232	3.16K 1% M	52-1601	3.16 Kohm Resistor 1% 1/8	Watt	Carbon	Film	Mini	
2	R133, R233	3.24K 1% M	52-1603	3.24 Kohm Resistor 1% 1/8	Watt	Carbon	Film	Mini	
4	R138, R142, R238, R242	24.9K 1% M	52-1631	24.9 Kohm Resistor 1% 1/8	Watt	Carbon	Film	Mini	
2	R139, R239	16.9K 1% M	52-1619	16.9 Kohm Resistor 1% 1/8	Watt	Carbon	Film	Mini	
2	R140, R240	22M D	50-2442	22 Mohm Resistor 5% 1/4	Watt	Carbon	Film	Mini	
2	R141, R241	20 M	50-0400	20 Ohm Resistor 5% 1/8	Watt	Carbon	Film	Mini	
2	R144, R244	560K M	50-0485	560 Kohm Resistor 5% 1/8	Watt	Carbon	Film	Mini	
2	R146, R246	499 1% M	52-1641	499 Ohm Resistor 1% 1/8	Watt	Carbon	Film	Mini	

DBX 166A DUAL COMPRESSOR/EXPANDER
056153A0.001
Bill Of Materials
Quan Reference Part SYMAN Description
May 9, 2000
Revised: October 1, 1994
Revision: A0
11:13:11
Page

4	R152, R158, R252, R258	280K 1% M	52-1652	280 Kohm Resistor 1% 1/8 Watt Carbon Film Mini
2	R157, R257	1.74K 1% M	52-1643	1.74 Kohm Resistor 1% 1/8 Watt Carbon Film Mini
4	R163, R167, R263, R267	39.2K 1% M	52-1634	39.2 Kohm Resistor 1% 1/8 Watt Carbon Film Mini
2	R169, R269	1M M	50-0403	1 Mohm Resistor 5% 1/8 Watt Carbon Film Mini
2	R170, R270	200K 1% M	52-1651	200 Kohm Resistor 1% 1/8 Watt Carbon Film Mini
2	R172, R272	7.15K 1% M	52-1626	7.15 Kohm Resistor 1% 1/8 Watt Carbon Film Mini
2	R174, R274	2.49K 1% M	52-1644	2.49 Kohm Resistor 1% 1/8 Watt Carbon Film Mini
2	R176, R276	174 1% M	52-1640	174 Ohm Resistor 1% 1/8 Watt Carbon Film Mini
2	R179, R279	6.34K 1% M	52-1648	6.34 Kohm Resistor 1% 1/8 Watt Carbon Film Mini
4	R181, R182, R281, R282	124K 1% M	52-1621	124 Kohm Resistor 1% 1/8 Watt Carbon Film Mini
2	R184, R284	210 1% M	52-1622	210 Ohm Resistor 1% 1/8 Watt Carbon Film Mini
2	R192, R292	560 M	50-0401	560 Ohm Resistor 5% 1/8 Watt Carbon Film Mini
5	S100, S101, S103, S200, S201	SW440026	44-0026	4PDT I/O Switch (small), PC Mount
2	S102, S202	SW440027	44-0027	DPDT I/O Switch (mini), PC Mount
1	S204	SW440022	44-0022	6PDT I/O Switch (mini), PC Mount
8	SC1, SC2, SC3, SC4, SC5, SC6, SC7, SC8	SC340125	34-0125	Switch Cap, Black
3	SR1, SR2, SR3	SR283328	28-3328	Screw, MS, PHL, IN SE ST, Z2, 4-40X1/4
12	SR5, SR6, SR7, SR8, SR9, SR10, SR11, SR12, SR13, SR14, SR15, SR16	SR283342	28-3342	Nut, HEX, CNT, STL, Z2, 7x.75mm
3	SS1, SS2, SS3	SS283341	28-3341	Swege Standoff, Hex, x 1.200" H 4-40, DBX
12	TP1, TP2, TP3, TP4, TP100, TP101, TP102, TP103, TP200, TP201, TP202, TP203	TEST2	36-0095	2 Pin Test Point For DBX
1	U1	78M15	70-4130	7815 +15 Volt Voltage Regulator
1	U2	79M15	70-4131	7915 -15 Volt Voltage Regulator
2	U3, U4	CA3046D	72-4321	CA3046 Matched Transister Pairs BPO
4	U100, U103, U200, U203	5532D	72-4316	5532 Low Noise Dual Op-Amp
2	U101, U201	UPC1252	72-4262	UPC1252HA2, VCA THAT (OBS)
6	U102, U106, U107, U202, U206, U207	TL074D	72-4320	TL074 Quad JFet-Input Op-Amp
8	U104, U108, U109, U110, U204, U208, U209, U210	LM339D	72-4306	LM339 Quad Comparator
2	U105, U205	UPC1253	72-4261	UPC1253HA2 RMS
4	VR101, VR104, VR201, VR204	TP50K H	42-0222	50 K Trim Pot, Vertical Mount, 3/4 turn
2	VR102, VR202	10K402085	40-2085	10 K "B" 16mm, Rot Pot, 25mm D Shaft
8	VR103, VR105, VR106, VR107, VR203, VR205, VR206, VR207	20K402086	40-2086	20 K "B" 16mm, Rot Pot, 25mm D Shaft horiz mt.
2	VR108, VR208	1M402087	40-2087	1 M "2" Rot Pot, 25MM D Shaft
12	WA1, WA2, WA3, WA4, WA5, WA6, WA7, WA8, WA9, WA10, WA11, WA12	WA283325	28-3325	Washer, Flat, STL, Z2, M7
6	WA100, WA102, WA103, WA200, WA202, WA203	WA283345	28-3345	Washer, Ground
1	WR1	W360052	36-0052	Wire, 2 End, 4.00", Grn/Yel UN1015-18