

# EXTERNAL CONNECTION

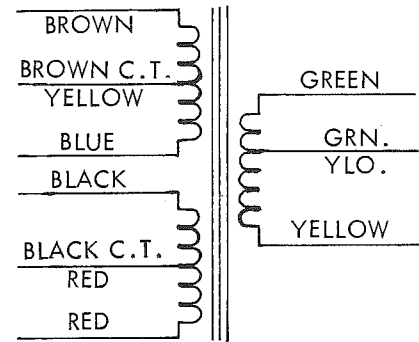
## SPEAKER LINE MATCHING TRANSFORMERS

DUKANE Model 710-3017 710-3018  
710-3019 710-3030 710-3031 710-3046 710-3065

710-3065 Combination Speaker Transformer  
25 & 70v. 8 ohms & 16 ohms 2 watts max.

CONNECTIONS FOR 6 TO 8 OHM SPKRS.

DIST. LINE VOLTAGE	JUMPERS	DIST. LINE TIES TO	WATTS	Z <sub>p</sub>	SECONDARY TAPS
70 V.	BLUE TO BLACK	BROWN & RED	1/2	10K	GRN. YLO. & YELLOW
		BRN. YLO. & RED	1	5K	
		BLACK & RED	2	2.5K	
25 V.	BROWN TO BLACK	BROWN & RED	1/16	10K	GRN. YLO. & YELLOW
		BRN. YLO. & RED	1/8	5K	
		BLACK & RED	1/4	2.5K	
	BRN. YLO. TO BLK RED	BLK. RED & RED	1	625	GREEN & YELLOW
		BLUE TO RED	2	312	GRN. YLO. & YELLOW



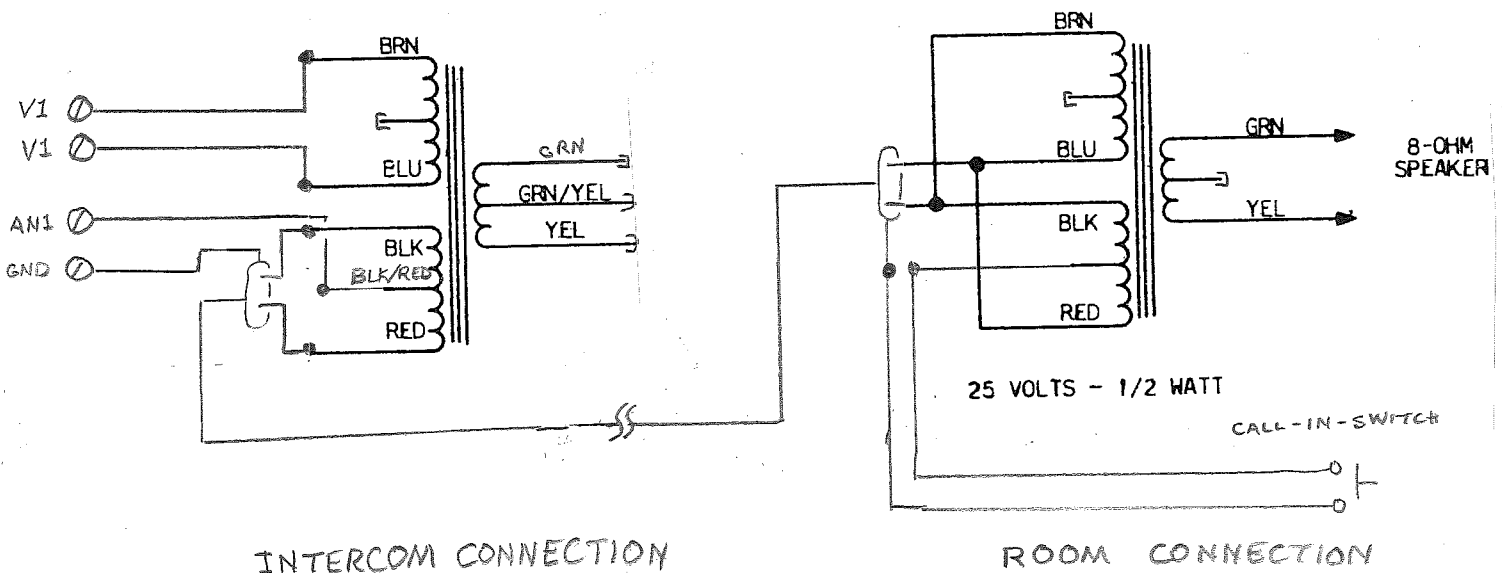
ALL LEADS 7" LONG INCLUDING 1/2" TINNING

### NOTES:

FOR GREATER EFF. ON 2W. TIE BRN. TO BLK. AND BLUE TO RED AND TIE 70V. LINE TO BLACK & RED

ON 70V. LINE FOR 1/2, 1, AND 2 WATTS, TIE 16 OHM SPKR. TO GREEN & YELLOW

ON 25V. LINE FOR 1/2 & 2 WATTS, TIE 2-4 OHM SPKR. TO GRN. YLO. & YELLOW FOR 1/16, 1/8 & 1/4 WATTS, TIE 16 OHM SPKR. TO GREEN & YELLOW



INTERCOM CONNECTION

ROOM CONNECTION

710-3065 FOR REDUCED WIRE CALL-IN

COMMUNICATIONS SYSTEMS INSTALLATION DATA

400-1463		USED ON	
REV.	DESCRIPTION	DATE	BY
I.	25 VOLTS - 1/16 WATT		<p>400-1463</p>
II.	25 VOLTS - 1/8 WATT		
III.	25 VOLTS - 1/4 WATT		
IV.	25 VOLTS - 1/2 WATT		
V.	25 VOLTS - 1 WATT		
VI.	25 VOLTS - 2 WATTS		
VII.	70 VOLTS - 1/8 WATT		
VIII.	70 VOLTS - 1/2 WATT		
IX.	70 VOLTS - 1 WATT		
X.	70 VOLTS - 2 WATTS		

A 16-OHM SPEAKER MAY BE CONNECTED IN PLACE OF THE 8-OHM SPEAKER INDICATED IN THE ABOVE HOOK-UPS FOR 1/2 THE INDICATED POWER LEVEL OR MAY BE CONNECTED TO THE 16-OHM TAP (GREEN AND YELLOW), IF AVAILABLE, AT THE INDICATED POWER LEVEL.

A FOUR-OHM SPEAKER MAY BE CONNECTED IN PLACE OF THE 8-OHM SPEAKER INDICATED FOR THICE THE INDICATED POWER LEVEL OR MAY BE CONNECTED TO THE 4-OHM TAP (GREEN AND YELLOW/GREEN), IF AVAILABLE, AT 1/2 THE INDICATED POWER LEVEL.

THE MAXIMUM RATED LEVEL FOR THE TRANSFORMER IS 2 WATTS PROGRAM MATERIAL.

MATERIAL: FINISH: \_\_\_\_\_

UNLESS OTHERWISE SPECIFIED DECIMAL DIMENSIONS TO BE ± \_\_\_\_\_

ANGLES TO BE ± \_\_\_\_\_

SCALE: \_\_\_\_\_

DATE: 12-20-65

W. A. S. \_\_\_\_\_

ISSUE: \_\_\_\_\_

APPROVED: *[Signature]*

DRAWN: *[Signature]*

CHECKED: \_\_\_\_\_

ENGR. G. O. S.

NO. 400-1463

ISSUE: 00

**DUKANE**  
Corporation  
ESTABLISHED 1937  
ST. LOUIS, MISSOURI, U.S.A.

SUGGESTED HOOK-UPS  
FOR  
710-3065 TRANSFORMER



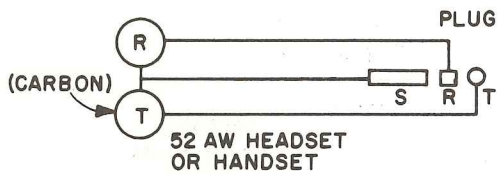
DUKANE

NOV. 74

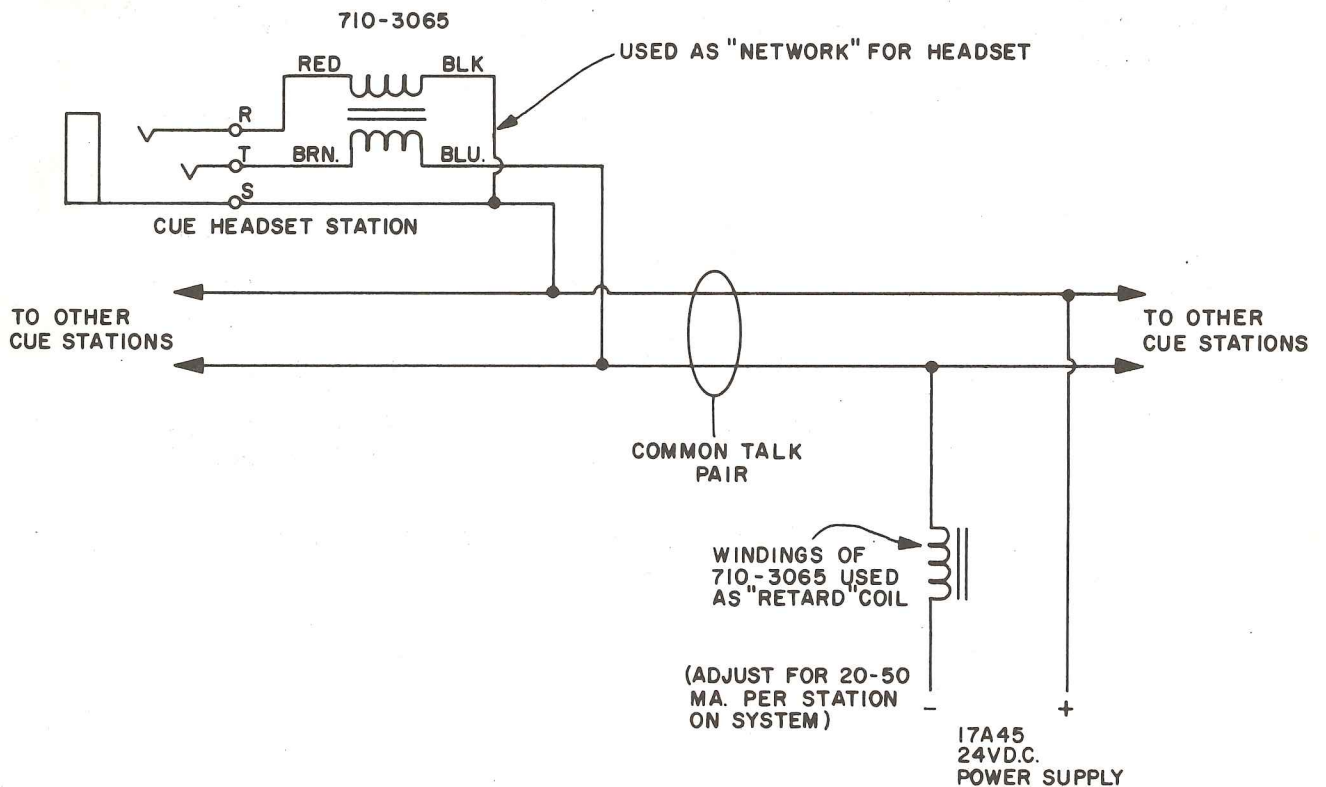
# SERVICE NOTES

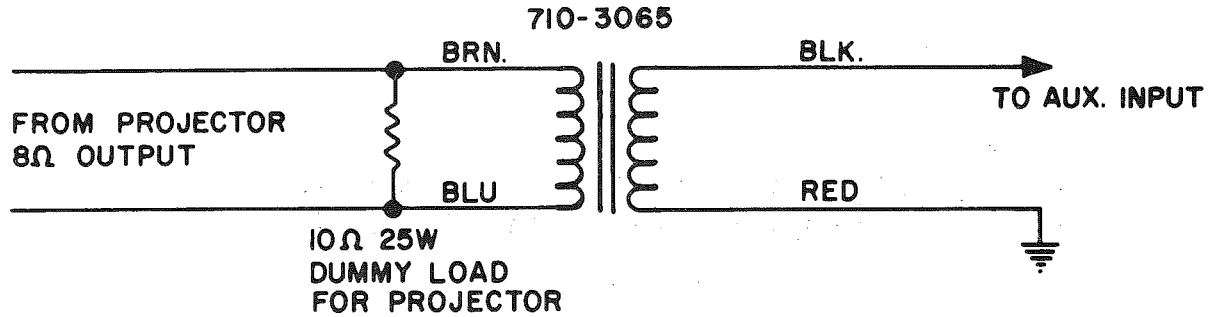
## SPECIAL APPLICATIONS FOR A STANDARD (710-3065)

Dukane's distributor in Duluth Minn. has lent several useful ideas for the 710-3065 speaker matching transformer. Cue systems, matching problems, or isolation problems can be resolved by different view points. Utilize their ideas or your better methods for the best concepts available. Good luck.

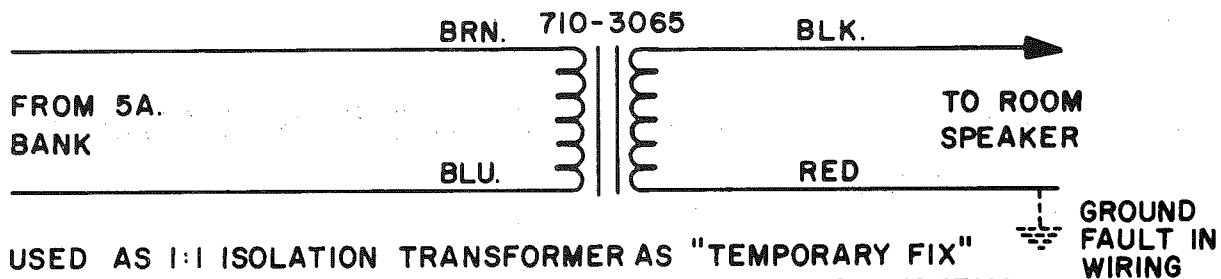


### COMMON TALK CUE PHONE SYSTEM

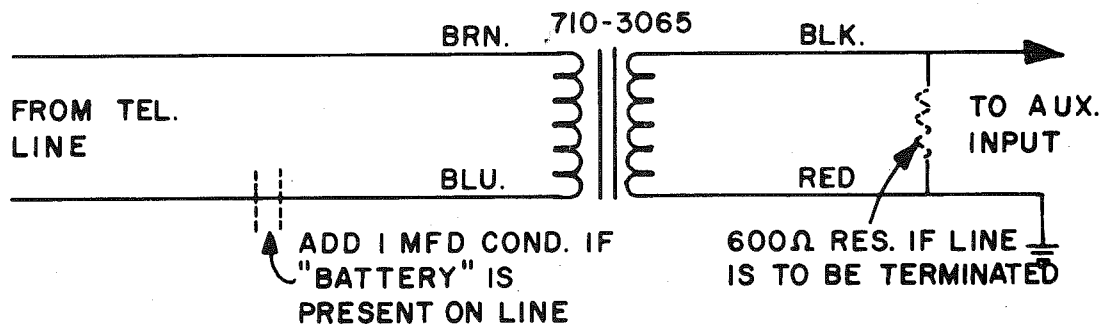




MOTION PICTURE PROJECTOR FEED TO SOUND SYSTEM.  
(USE WITH ANY 8Ω OUTPUT DEVICE, TAPE, ETC.)



USED AS 1:1 ISOLATION TRANSFORMER AS "TEMPORARY FIX"  
FOR GROUNDED SPEAKER LINES ON SCHOOL SOUND SYSTEMS  
& I.C. SYSTEMS.



TEL. LINE INPUT AMP. FOR PAGING ADAPTORS & MUSIC FEED.

ISOLATION TRANSFORMER FOR HUM OR CROSSTALK FOR UNBALANCED LINES

NOTES:

- 1). Tape all unused leads.
- 2). In some cases, (on inputs) the transformer must be mounted for minimum hum.

Thanks to Wally Morse, System Engineer, of Endresen Sound Company, Duluth, Minn..  
Keep the ideas rolling in.

*R Max Mayes*