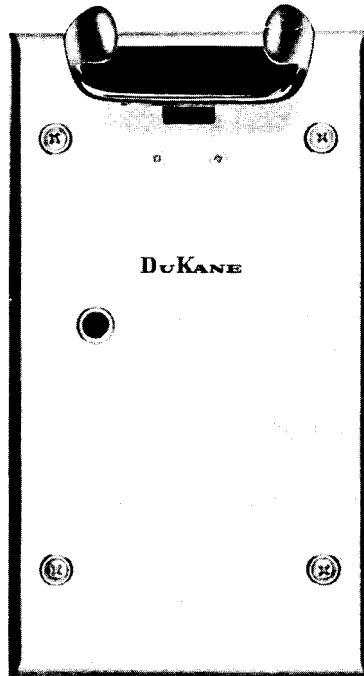


DUKANE MODEL 9A680A WALL PLATE & HOOKSWITCH



GENERAL DESCRIPTION

The DuKane Model 9A680A Wall Plate and Hookswitch is designed for use in DuKane sound systems with telephone intercom service; used in conjunction with a room speaker or some suitable annunciator, the 9A680A with either a dynamic or carbon type handset becomes a remote answering station with the same privacy of any telephone. Handset connections are made at terminal strip located behind the front plate; the wall plate is designed to fit a standard 4-gang electrical back box. The overall dimensions of the wall plate are 4-1/2 inches wide by 8-3/16 inches high and the hookswitch assembly requires 1-3/4 inches minimum depth behind the wall plate.

POWER REQUIREMENTS

The 9A680A Wall Plate and Hookswitch requires a dynamic or carbon type handset and a suitable external source of handset power (24 volts DC) and incoming annunciator control and intercom lines.

PREPARATION FOR USE

Wire nuts may be used to make wiring connections. See schematic diagram for external wiring connections. With the handset off the hanger, the hookswitch may be regarded as two form "B" switches with two form "C" switches; i.e., the two form "B" switches are closed when the handset is off of the hanger, and these switches are open when the handset is placed in the hanger. It is possible to rewire the hookswitch assembly for four form "C" switches for any special application; the switch blades are included although not wired to terminals as a 9A680A.

ALL DYNAMIC HANDSETS (DuKane Model 257-33, or equivalent)

NOTE

When dynamic handset is used with the 9A680A Wall Plate and Hookswitch, please remove the 0.5 mfd capacitor connected between terminals C and D.

Connect the receiver wires to terminals A and B. Connect transmitter microphone wires to terminals D and E. Be sure and connect any shields together; connect shields to "ground" at console or control station power supply only.

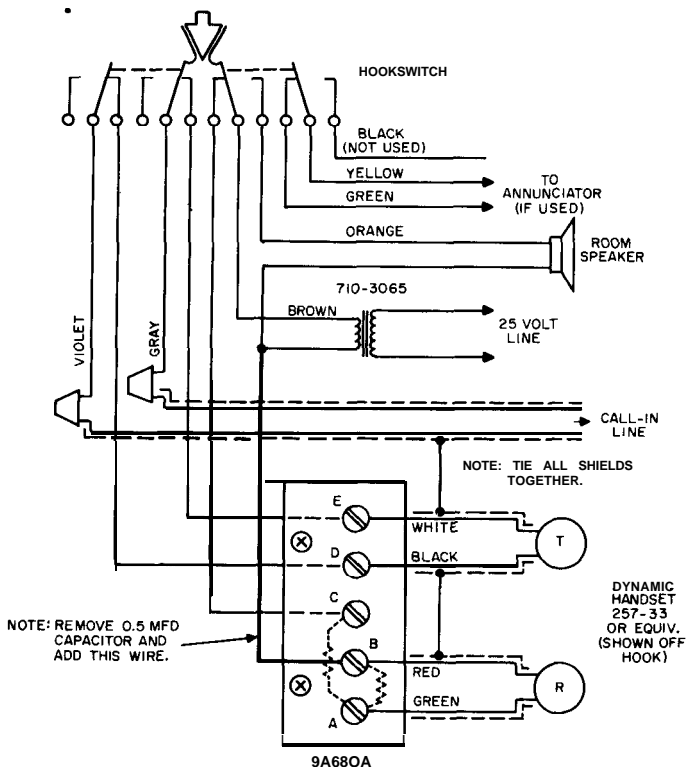
For the 257-33 dynamic handset, observe the following color code:
 for the receiver--use the green wire and the red wire, and
 for the transmitter--use the black wire and the white wire.

ALL CARBON TYPE HANDSETS (DuKane Model 257-42, or equivalent)

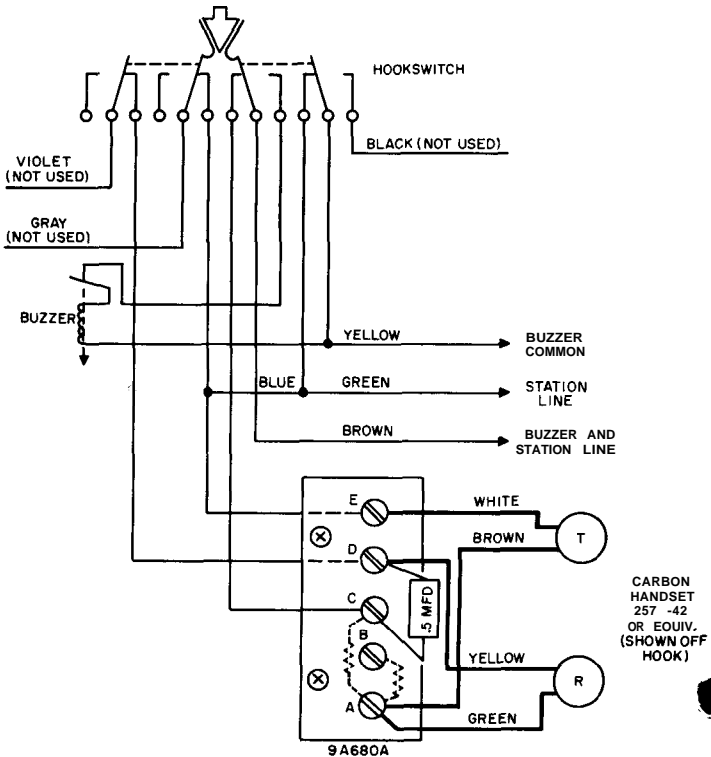
Connect the receiver wires to terminals A and D. Connect transmitter microphone wires to terminals A and E.

For the 257-42 carbon type handset, observe the following color code:
 for the receiver--use the green wire and the yellow wire, and
 for the transmitter--use the brown wire and the white wire.

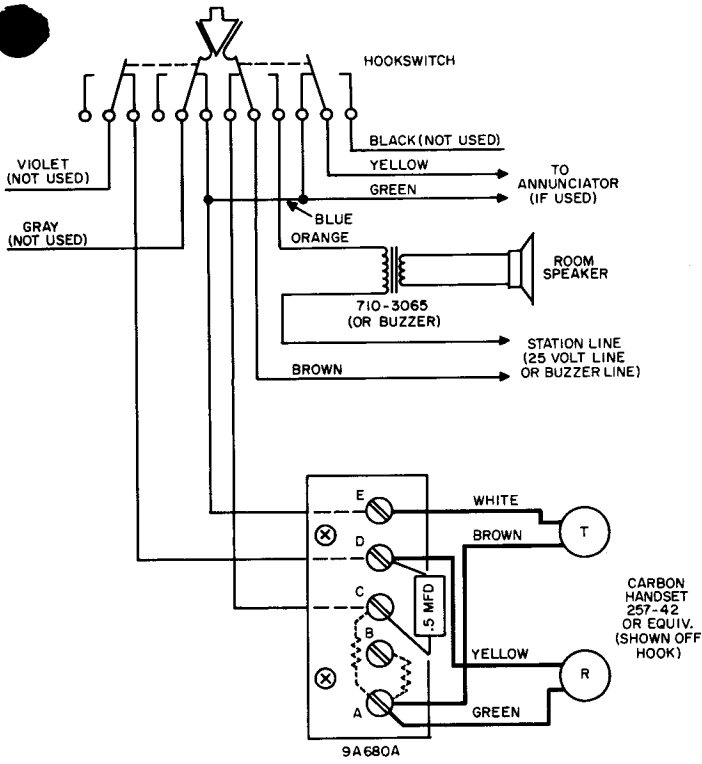
ROOM STATION HANDSET CONNECTIONS - DYNAMIC HANDSET



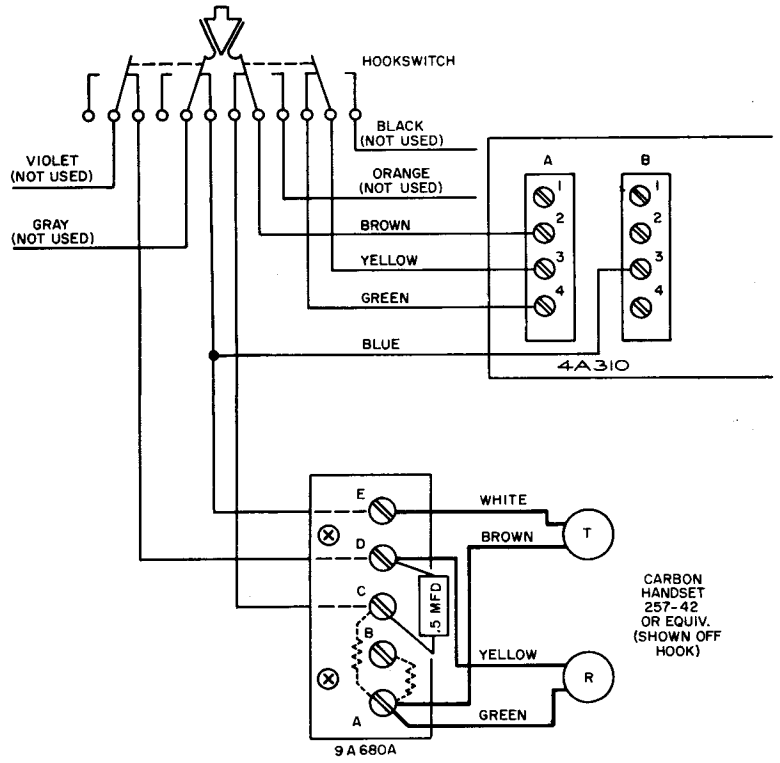
ROOM STATION HANDSET CONNECTIONS-CARBON HANDSET-3 WIRE SYSTEM



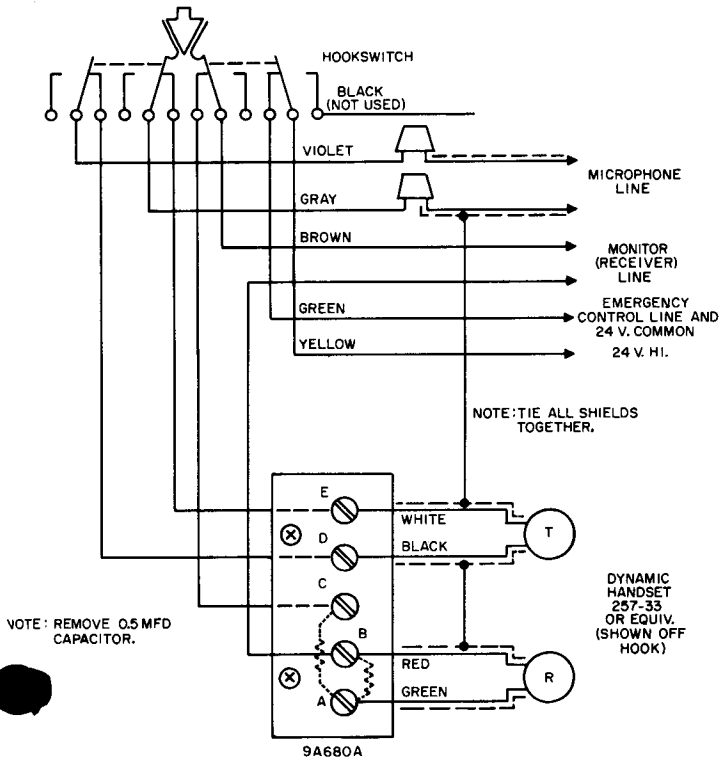
ROOM STATION HANDSET CONNECTIONS - CARBON HANDSET - 4 WIRE SYSTEM



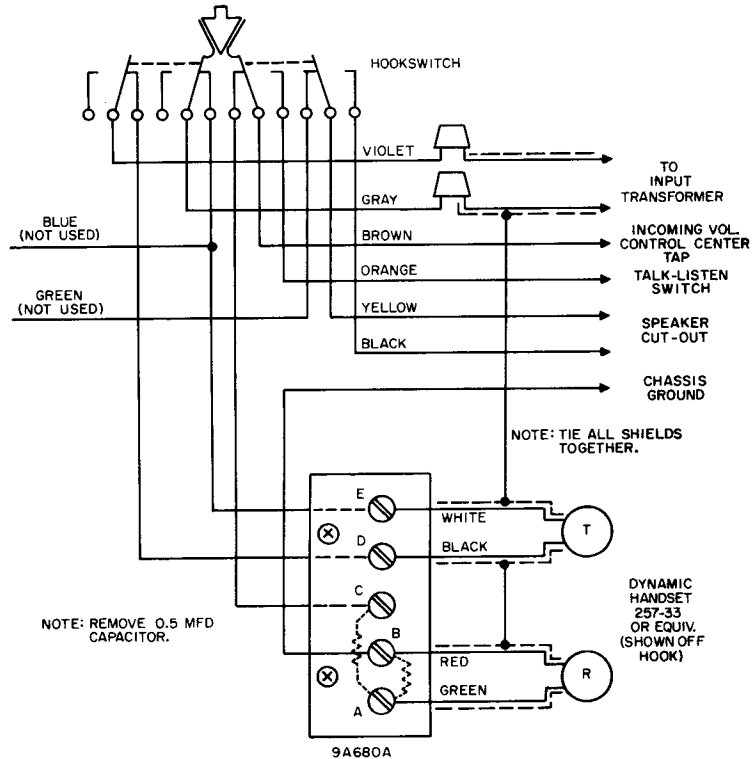
TELEPHONE INTERCOM HANDSET CONNECTIONS - 4A310 AND CARBON HANDSET



EMERGENCY TELEPHONE HANDSET - DYNAMIC HANDSET



INTERCOM MASTER STATION HANDSET CONNECTIONS 4A110, 4B100 OR 4C100 AND DYNAMIC HANDSET



190-1035

NO. REQ'D	USED ON

PHONE CONNECTIONS

ALL DYNAMIC TYPES:

- TERM. A - RECEIVER
- TERM. B - RECEIVER
- TERM. D - TRANSMITTER
- TERM. E - TRANSMITTER
- GROUND (MTG. SCREW) - SHIELDS

FOR MODEL 257-33
OR EQUIV.

257-33 COLOR CODE

- REC. - GREEN & RED
- TRANS. - BLACK & WHITE

ALL CARBON TYPES:

- TERM. A - RECEIVER
- TERM. D - RECEIVER
- TERM. A - TRANSMITTER
- TERM. E - TRANSMITTER

FOR MODEL 257-42
OR EQUIV.

257-42 COLOR CODE

- REC. - GREEN & YELLOW
- TRANS. - BROWN & WHITE

APPLICATION CONNECTIONS

DYNAMIC - ROOM HANDSET

- BRN. - TRANSFORMER - SECONDARY
- B - TRANSFORMER - SPEAKER V.C.
- ORN. - SPEAKER V.C.
- YEL. - ANNUNCIATOR SUPPLY
- GRN. - ANNUNCIATOR
- VIO. - CALL IN LINE
- GRAY -

CARBON TYPE - ROOM - 4 WIRE SYSTEM

- BRN. - STATION LINE
- ORN. - BUZZER OR SPEAKER TRANSFORMER
- YEL. - ANNUNCIATOR COMMON
- GRN. - ANNUNCIATOR
- BLUE - TIE TO GRN.
- STATION LINE - COMMON TO BUZZER OR SPEAKER

DYNAMIC - CONSOLE HANDSET
(4A11C) (4B100) (4C100)

- BRN. - POT - CENTER TAP
- B - CHASSIS GROUND
- ORN. - TALK LISTEN SWITCH
- VIO. - INPUT TRANSFORMER
- GRAY -
- YEL. - SPEAKER CUTOFF
- BLK. -

CARBON TYPE - CONSOLE

- BRN. - "A" 2 - 4A310
- YEL. - "A" 3 - 4A31C
- GRN. - "A" 4 - 4A31C
- BLUE - "B" 3 - 4A310

DYNAMIC - EMERGENCY

(RECEIVER TIES TO B AND C)

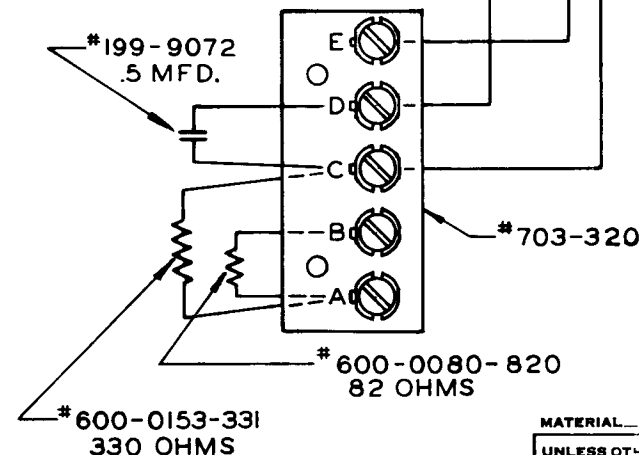
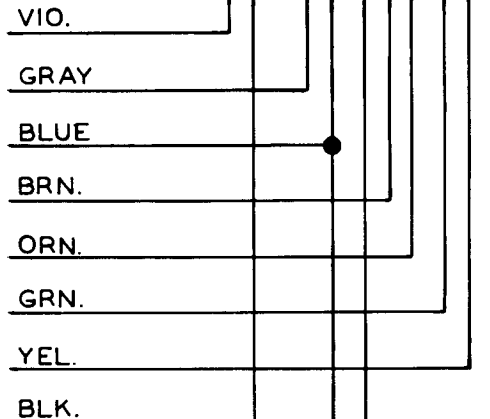
- BRN. - MONITOR LINE
- B -
- YEL. - 24 V HI
- GRN. - CONTROL LINE - EMERGENCY
- VIO. - MICRO INPUT LINE
- GRAY -
- 28 V PILOT LIGHT TO GRN. & 24 V COMMON

CARBON TYPE - ROOM-3 WIRE SYSTEM

- BRN. - STATION LINE
- ORN. - BUZZER
- YEL. - ANNUN.COMMON-BUZZER COMMON
- BLUE - TIE TO GRN.

*680-348
SHOWN "OFF" HOOK

NOTE: REMOVE CAPACITOR
WHEN DYNAMIC HANDSET
IS USED.



MATERIAL _____ FINISH _____
UNLESS OTHERWISE SPECIFIED DECIMAL DIMENSIONS TO BE ±. FRACTIONAL DIMENSIONS TO BE ±.

DuKANE
CORPORATION
ESTABLISHED AS "OPERADIO" 1922
ST. CHARLES, ILLINOIS, U. S. A.

WIRING DIAGRAM
FOR MODEL 9A680A
WALL MTG. PLATE ASSY.

SCALE	DATE	ISSUE	WAS	DATE	APPR.
	2-21-61				
DRAWN <i>CM</i>	APP'D <i>WR</i>	NO. 190-1035		00	ISSUE
CHECKED <i>RM</i>	ENGR. <i>jee</i>				