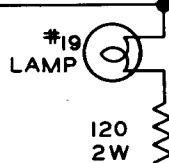
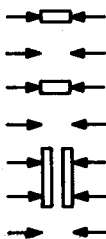


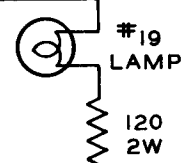
NO. REQ'D.	USED ON

TO 24V. SUPPLY
(THRU RELAY COIL OF
CHIME KIT-IF USED)

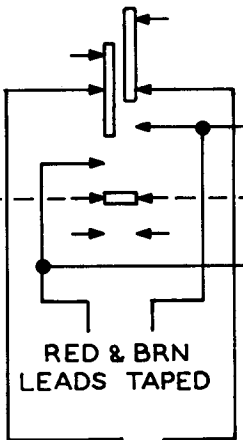
HOLD



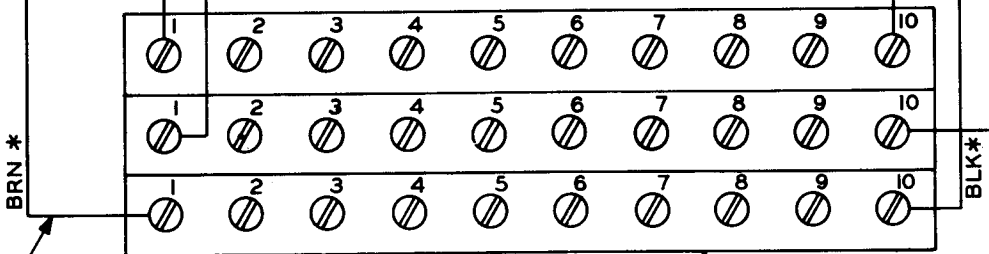
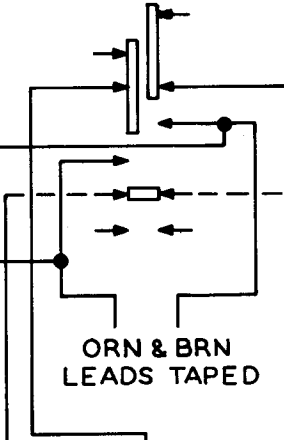
ANNUNCIATOR LAMP KIT NO. 438-106 (OPT'L)



#2 THRU #9 SAME AS #1 AND #10
STATION SELECTOR SWITCH
PT.#680-461
(SWBK INCLUDES HOLD
AND RELEASE BUTTONS)



BARE WIRE JUMPERS-CUT
FOR MIXED INTERCOM USE
-SEE INST. MANUAL



ANNUNC. HOME-RUN WIRE (P/O 438-106)
* EIA COLOR-CODED

PT.#703-317 (3)

MATERIAL	FINISH	SCALE	ISSUE	W A S	DATE	APPR.
UNLESS OTHERWISE SPECIFIED DECIMAL DIMENSIONS TO BE ± .		FRACTIONAL DIMENSIONS TO BE ±	ANGLES TO BE ±			

DUKANE
Corporation
ESTABLISHED 1922
ST. CHARLES, ILLINOIS U.S.A.

SCHEMATIC DIAGRAM
MODEL 9A960
SELECTOR BANK 10 STATION

SCALE _____
DATE 12-22-65
DRAWN *AW* APP'D. *STF*
CHECKED *AM* ENGR. *R/S*

NO. 190-1404

ISSUE