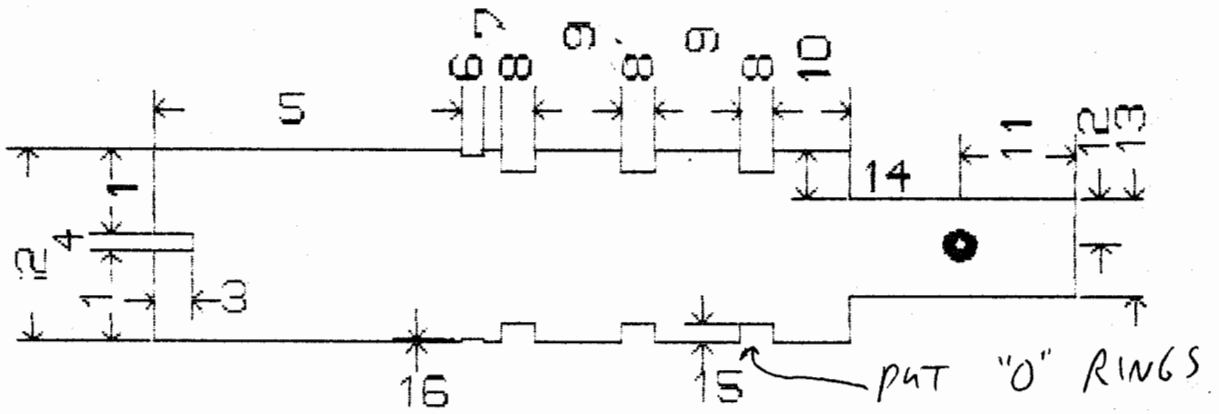


DRAWN BY: DAN FRASER
 DATE: OCT. 31, 1988
 FOR: INTERCONTINENTAL ELECTRONICS LTD.
 RICHMOND, B.C. CANADA

F100 FOLLOW UP SHAFT
 INTERCONTINENTAL ELECTRONICS LTD.
 OCT. 31, 1988



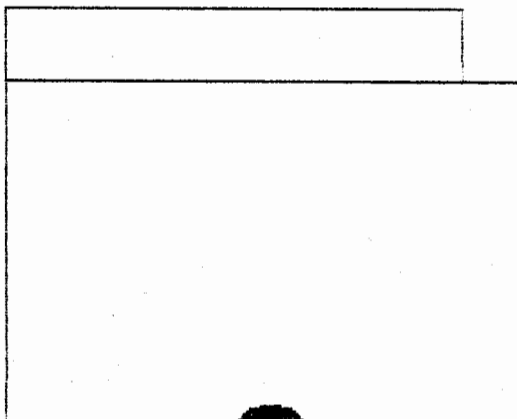
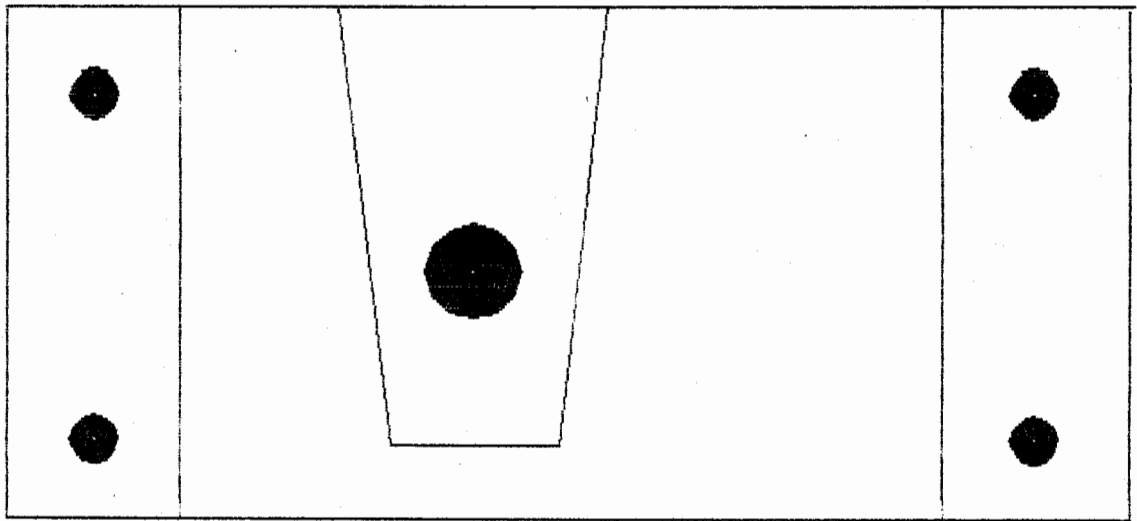
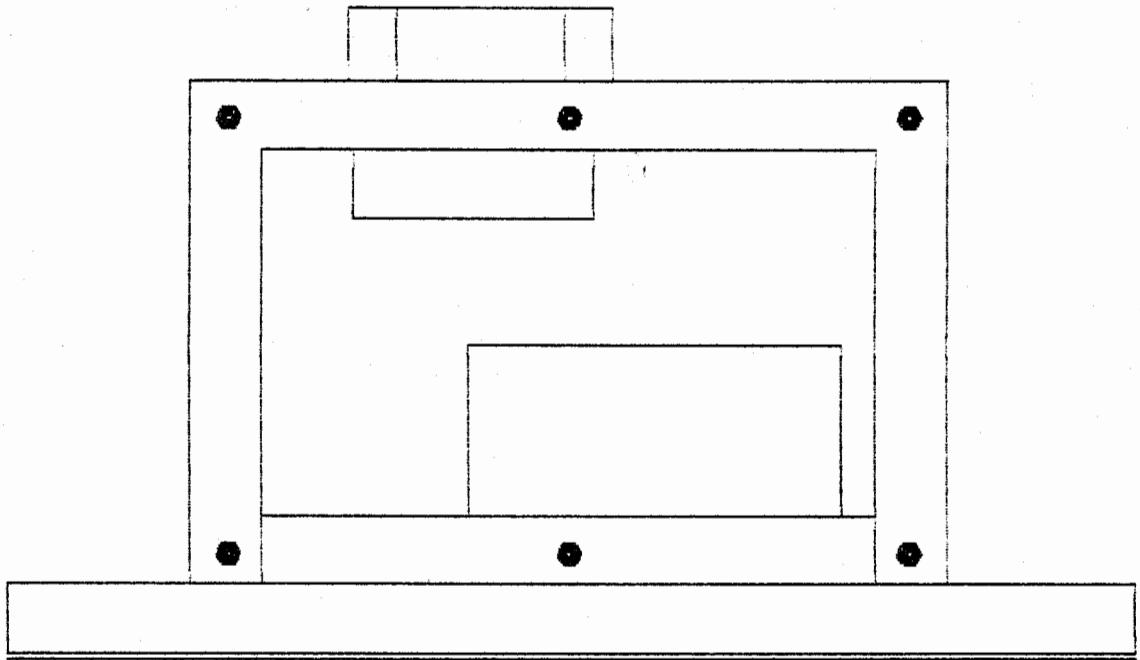
1	=	.225"	9	=	.225"	
2	=	.500"	10	=	.200"	
3	=	.100"	11	=	.300"	
4	=	.050"	12	=	.125"	
5	=	.080"	13	=	.250"	
6	=	.050"	14	=	.125"	
7	=	.047"	15	=	.057"	DEEP
8	=	.087"	16	=	.012"	DEEP

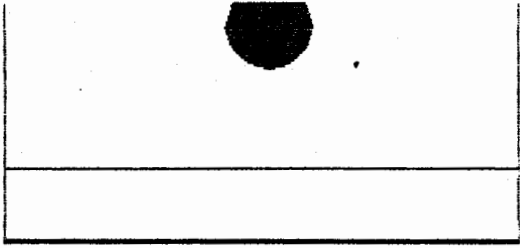
HOLE IS .087" dia.

PUT "O" RINGS
 IN THESE
 GROOVES

DRAWN BY: DAN FRASER

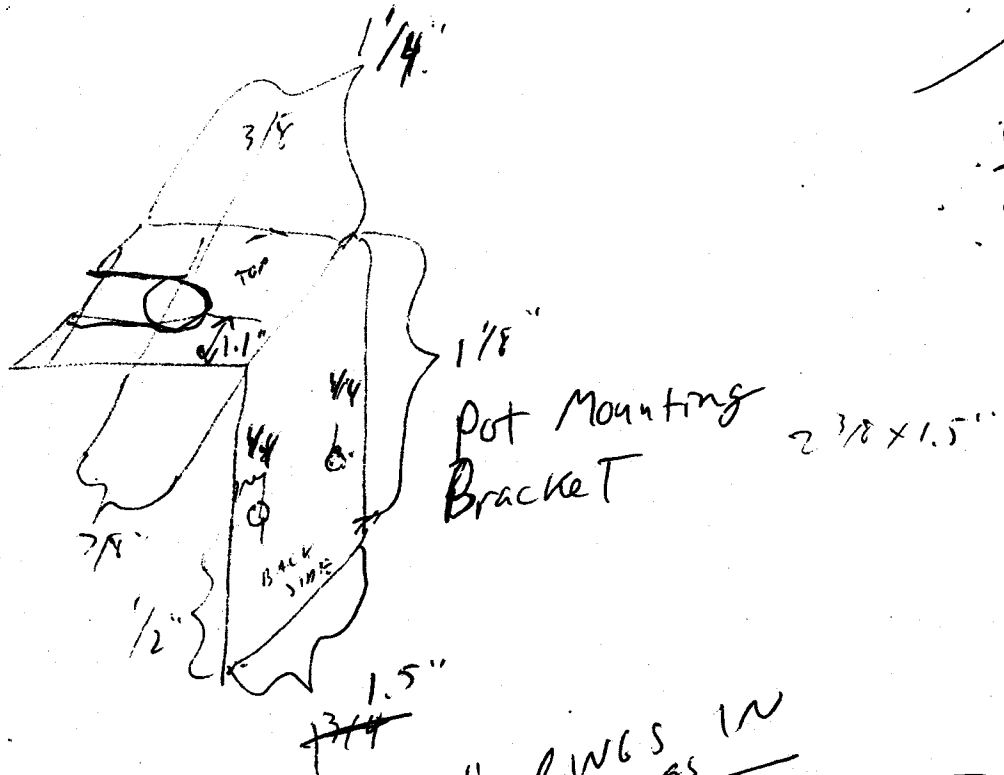
SCALE: 2:1





USE HIGH QUALITY STANDARD POT WITH METAL SHAFT

091 \$
 56 \$
 58 \$



F.U. Shaft

