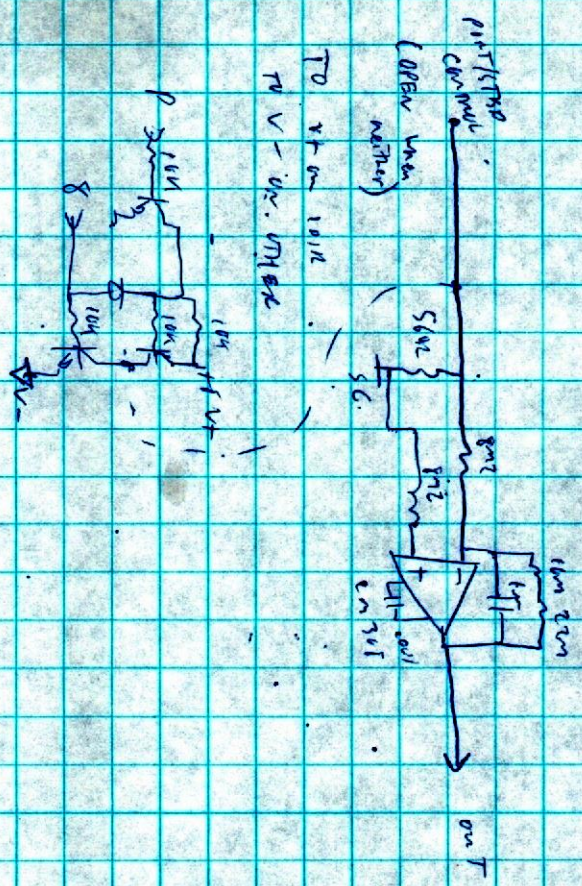


SE

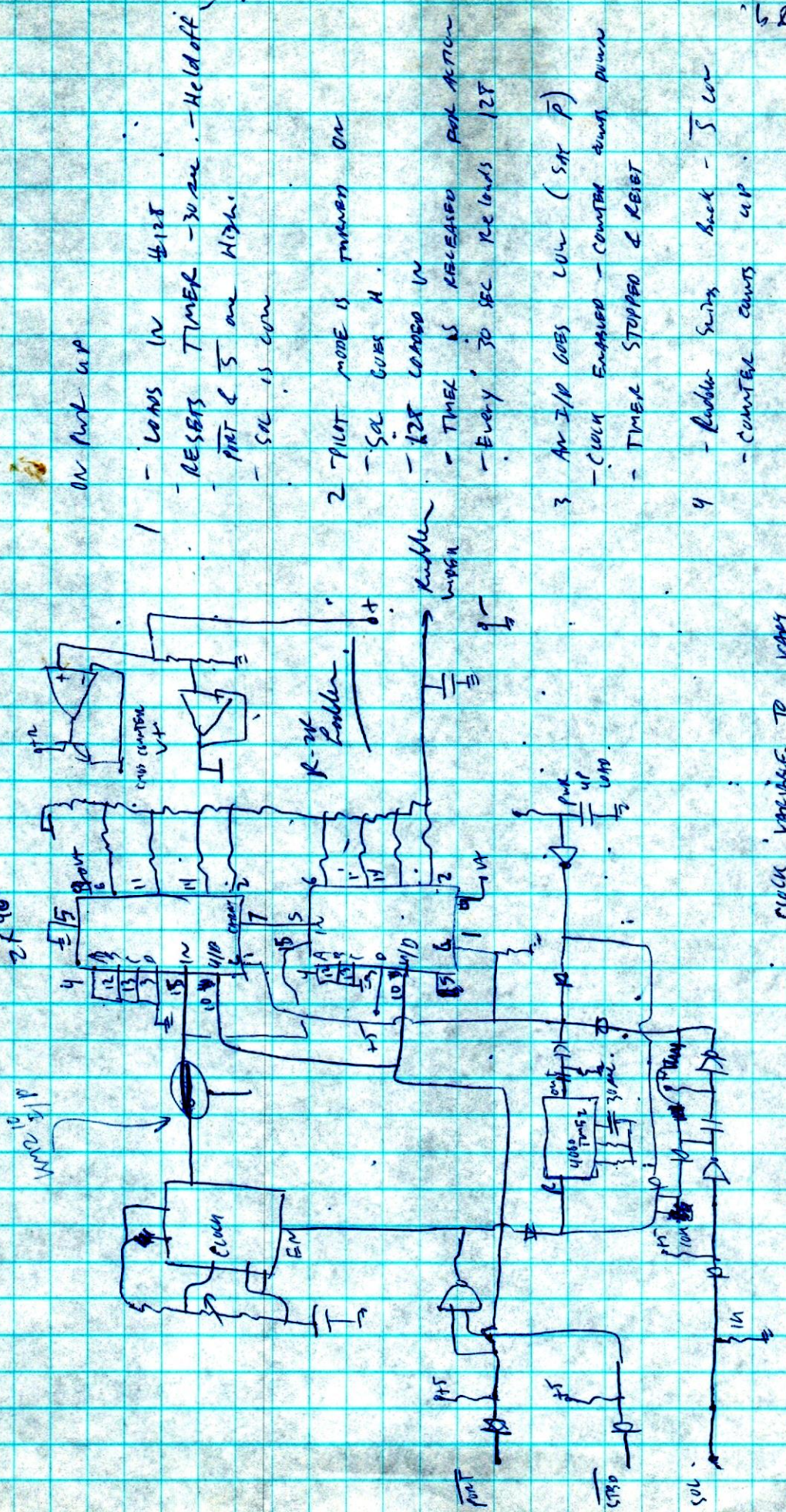
Great Madder



DIGITAL

GHOST

NUMBER



- 1 ON Pul up
 - Lamps IN #128
 - RESETS TIMER - 30 sec. - Hold off
 - PART of S one High
 - SOL is LOW
- 2 PLOT mode is turned ON
 - SOL GUES H.
 - 128 LAMPS IN
 - TIMER IS RELEASED FOR ACTION
 - Every 30 SEC Reloads 128
- 3 AN I/O GOES LOW (SAT P)
 - CLOCK ENGAGED - COMPUTER COUNTS DOWN
 - TIMER STOPPED & RESET
- 4 - Rubber Switch Back - S low
 - Counter counts up.

Dec/89

CLOCK VARIABLE TO VARY ACTION PUL DIFFERENT NO TIMES.

128 LAMPS - PUL UP

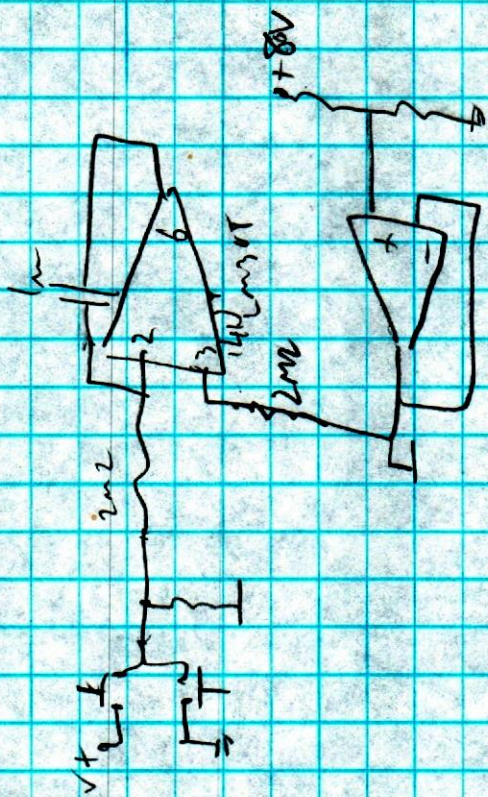
- TIMER TIME OUT

- SOL INPUT GUES HIGH

- SOL IN IS LOW

- PART OR STRD IN

2-21-96



324-

Too much

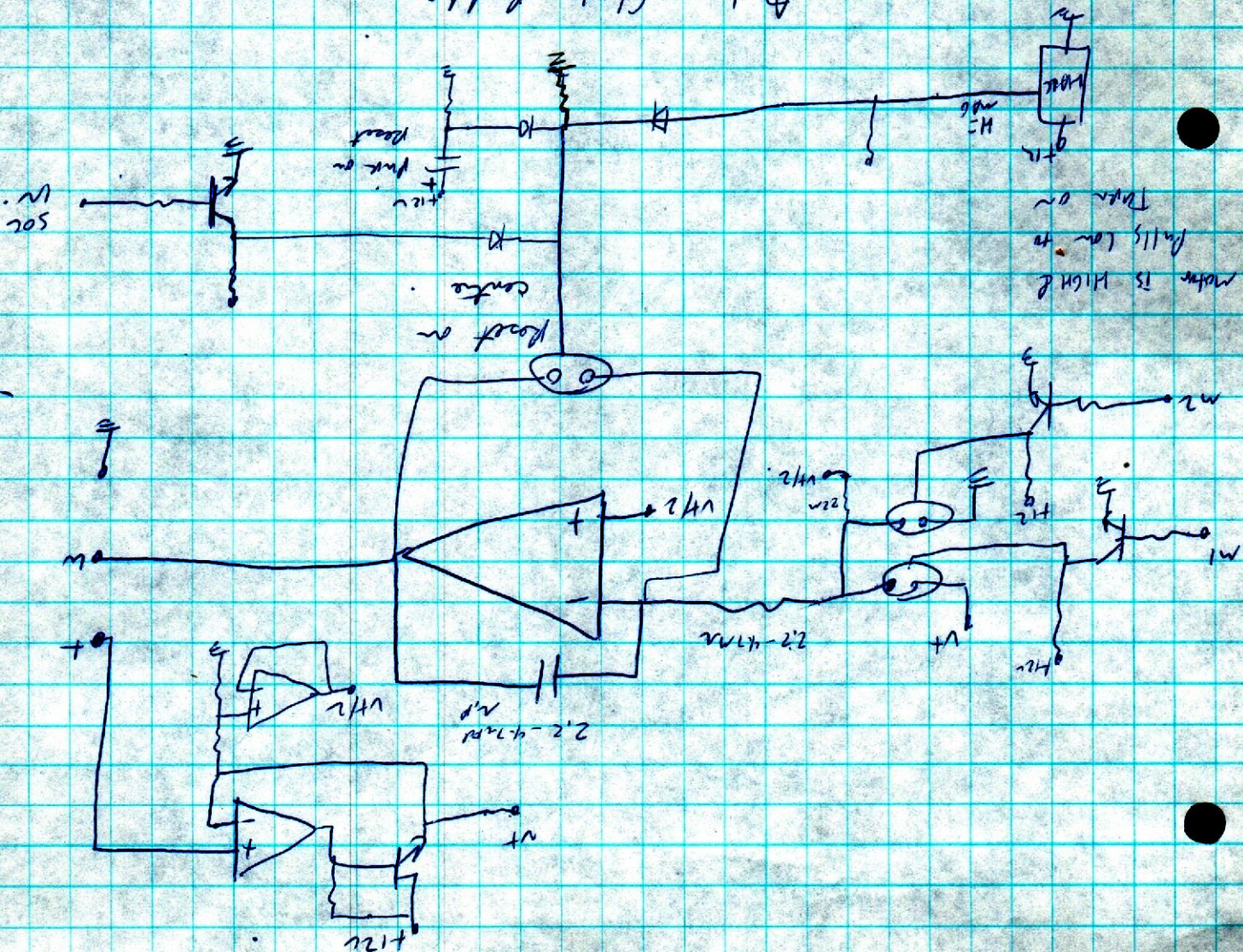
bins cap

- Drifts 0 in slowly - too much offset

1.343

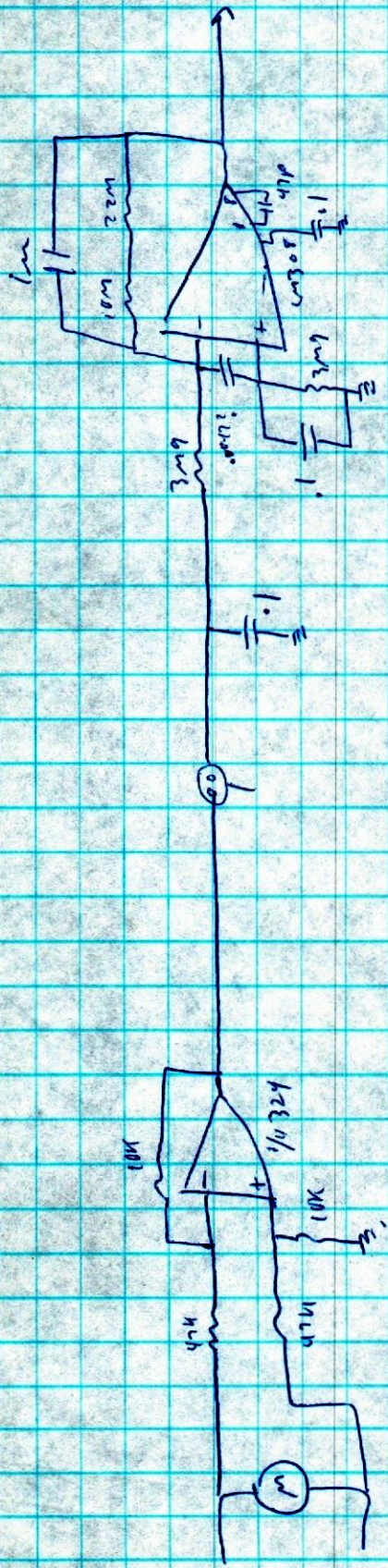
OP Amp - TL084
 5.2mA max. 3.0V supply
 Bi-FET or JFET

Analogue Ghost Rudder



SSO pilot

Ghost modulator



Gates on during parts of PWM cycle when motor is off. ~~to~~
 Ghost modulator works on back EMT of motor & not time.
 Feeds output signal dependent solely on motor speed.