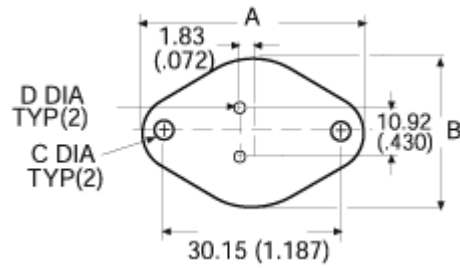


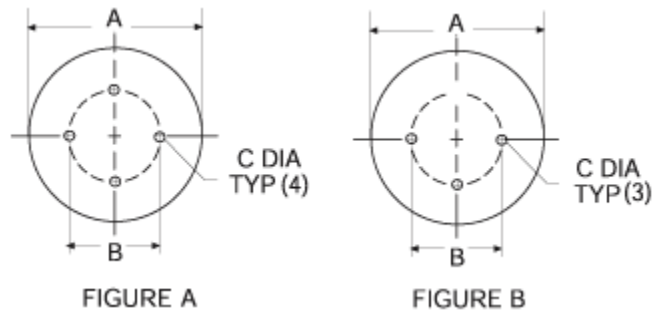
For TO-3



Part # to use

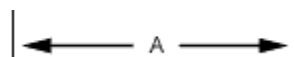
Model	RoHS	PCN	A	B	C	D
43-03-1	RoHS Compliant	N/A	43.94 (1.730)	31.75 (1.250)	3.56 (.140)	1.57 (.062)
43-03-2G	RoHS Compliant		42.04 (1.655)	27.00 (1.063)	3.96 (.156)	1.57 (.062)
43-03-3	RoHS Compliant	N/A	42.04 (1.655)	27.00 (1.063)	3.96 (.156)	4.22 (.166)
43-03-4G	RoHS Compliant		39.70 (1.563)	26.67 (1.050)	3.56 (.140)	1.57 (.062)
43-03-6	RoHS Compliant	N/A	42.04 (1.655)	28.58 (1.125)	3.96 (.156)	1.57 (.062)

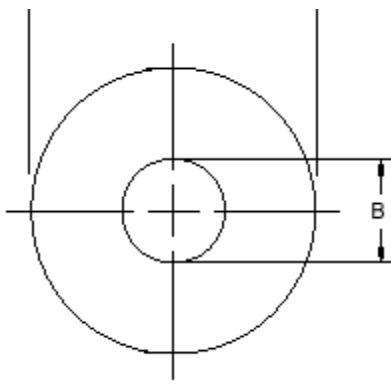
For TO-5 and TO-18



Part Number	RoHS	PCN	FIG.	A	B	C	
43-05-1G (TO-5)	RoHS Compliant		N/A	A	9.91 (.390)	5.08 (.200)	.91 (.036)
43-05-2G (TO-5)	RoHS Compliant		N/A	B	9.91 (.390)	5.08 (.200)	.91 (.036)
43-18-1G (TO-18)	RoHS Compliant		N/A	A	6.35 (.250)	2.54 (.100)	.91 (.036)

Washer





Part Number	RoHS	PCN	Thread	A	B
43-02-4	RoHS Compliant	N/A	#4	6.35 (.250)	3.05 (.120)
43-02-10	RoHS Compliant	N/A	#10	14.27 (.562)	5.16 (.203)
43-02-25	RoHS Compliant	N/A	1/4"	20.62 (.812)	6.73 (.265)