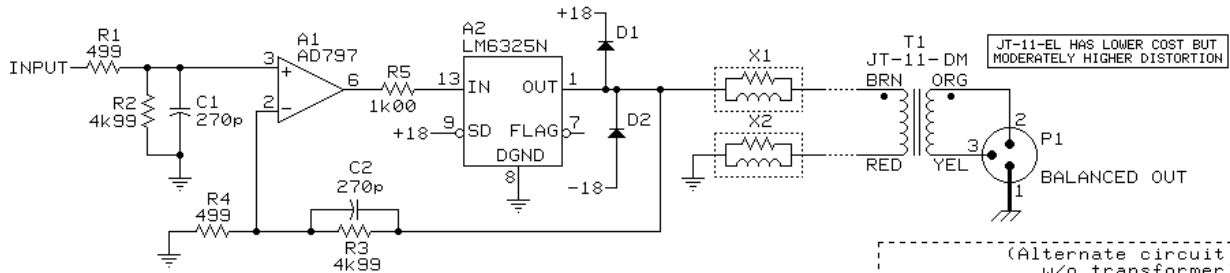
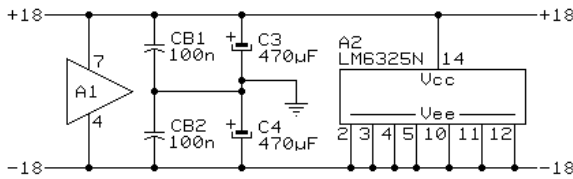
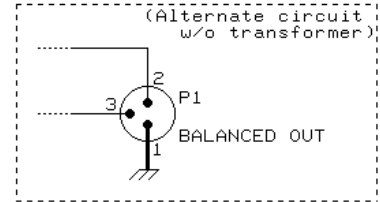


20 dB AMPLIFIER AND HIGH CURRENT BALANCED LINE DRIVER

THIS DRIVER SUITABLE FOR LOADS OF 300Ω MINIMUM AND UP TO 500 FEET OF TYPICAL CABLE ($C \leq 25$ nF)



SINCE THIS CIRCUIT IS DC COUPLED AND HAS NO DC SERVO, INPUT SIGNAL MUST HAVE NO DC OFFSET FOR BEST PERFORMANCE



INPUT IMPEDANCE: 5.5 kΩ
 GAIN = 20 dB ($A_v=10$)
 FREQUENCY RESPONSE: -0.2 dB @ 10 Hz & 25 kHz
 -3.0 dB @ 0.90 Hz & 150 kHz
 RATED OUTPUT: +21 dBu INTO 600Ω
 DISTORTION: <0.03% THD @ +20 dBu OUTPUT
 FULL POWER BANDWIDTH: 150 kHz
 DEVIATION FROM LINEAR PHASE: <1° 20 Hz TO 20 kHz
 OUTPUT IMPEDANCE: 80 Ω, 20 Hz TO 20 kHz
 SUPPLY CURRENT: 20 mA QUIESCENT, 300 mA MAX

NOTES :

1. ALL RESISTORS ARE ±1% 1/4w METAL FILM TYPES, ROEDERSTEIN MK2-1 OR EQUIVALENT
2. D1 AND D2 ARE HIGH CONDUCTANCE DIODES, SUCH AS 1N4448
3. C1 AND C2 ARE POLYPROPYLENE, POLYSTYRENE, OR NP0/C0G CERAMIC TYPES
4. X1 AND X2 ARE OUTPUT LOAD ISOLATORS, JENSEN #JT-OLI-2
5. A2 USES U_{ee} PINS FOR HEAT TRANSFER TO PC BOARD. ALLOW AT LEAST 2 SQUARE INCHES OF SOLID COPPER AREA AS A HEATSINK.
6. USE GOOD HIGH FREQUENCY CONSTRUCTION TECHNIQUES. USE OF POWER & GROUND PLANES IS HIGHLY RECOMMENDED.

© COPYRIGHT 1995, JENSEN TRANSFORMERS, INC.

jensen	AS023
	09/18/95
7135 HAYVENHURST AVE. VAN NUYS, CALIFORNIA 91406 (818) 374-5857	