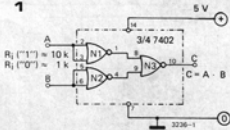


9

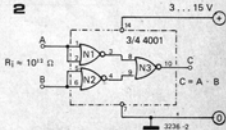
Three gates are needed for converting NOR-gates into an 'AND'-function. Figure 1 gives a TTL AND-gate consisting of three gates of a 7402. When inputs A and B are '1', so will be input C. The circuit of figure 1 can be applied to any ordinary TTL-circuit.

Figure 2 shows a COS/MOS AND-gate consisting of three NOR-gates each with two inputs. Since the gates N1/N2 in

1



2



NOR AND gate

both circuits are connected as inverters, several types of gate or inverter can be used, such as 7400 or 4011 gates or 7404 or 4007 inverters, for example.