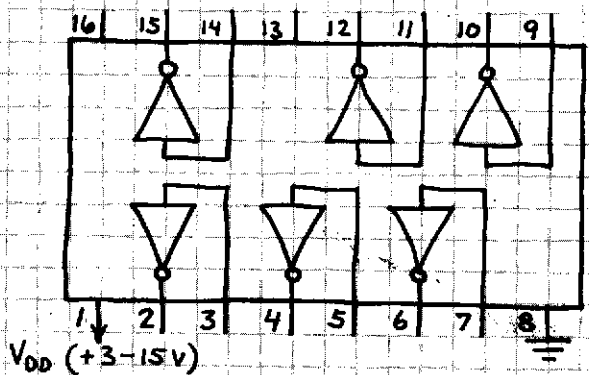


# HEX INVERTING BUFFER

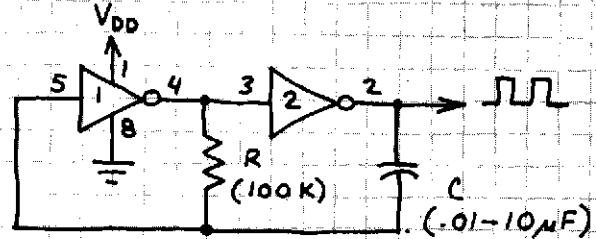
4049

IN ADDITION TO STANDARD LOGIC AND CMOS TO TTL INTERFACING, OFTEN USED IN OSCILLATORS AND PULSE GENERATORS. FOR LOW CURRENT APPLICATIONS, USE 4011 CONNECTED AS INVERTER. (OK TO USE 4011 FOR CIRCUITS ON THIS PAGE.)



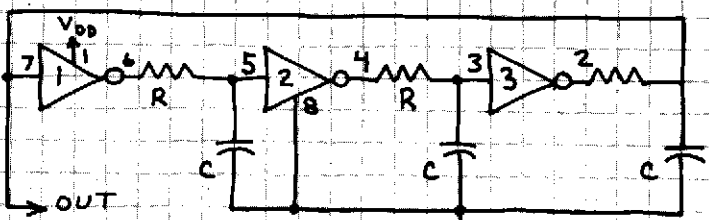
NOTE UNUSUAL LOCATION OF POWER SUPPLY PINS.

# CLOCK PULSE GENERATOR



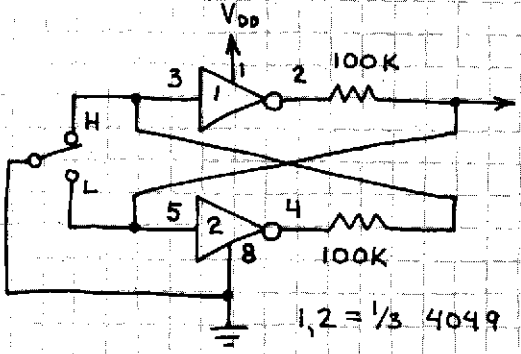
1,2 = 1/3 4049 PULSE RATE = 1/1.4 RC

# PHASE SHIFT OSCILLATOR



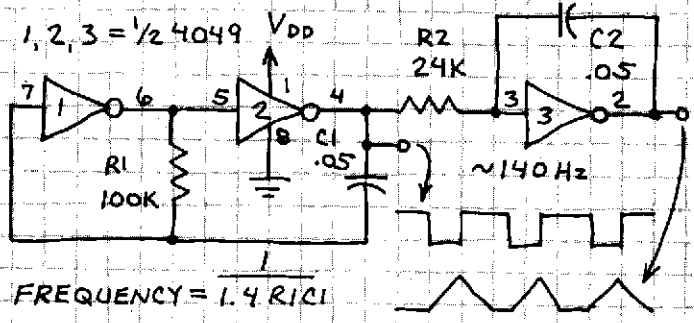
OUTPUT FREQUENCY = 1/3.3 RC 1,2,3 = 1/2 4049

# BOUNCELESS SWITCH



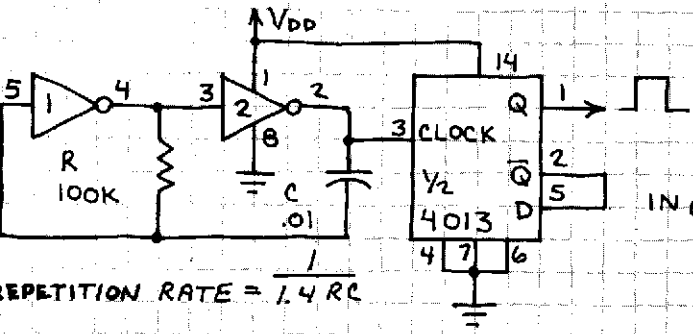
1,2 = 1/3 4049

# TRIANGLE WAVE SOURCE



FREQUENCY = 1/1.4 R1 C1

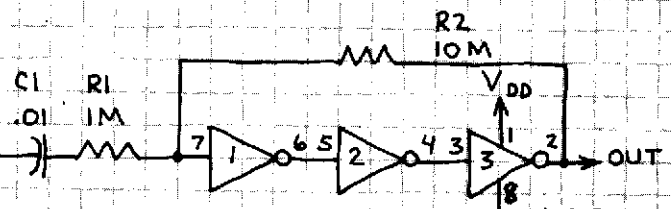
# SQUARE WAVE GENERATOR



REPETITION RATE = 1/1.4 RC

1,2 = 1/3 4049

# LINEAR 10X AMPLIFIER



NOTE THAT THE INVERTERS ARE USED IN A LINEAR MODE. GAIN = R2/R1. 1,2,3 = 1/2 4049