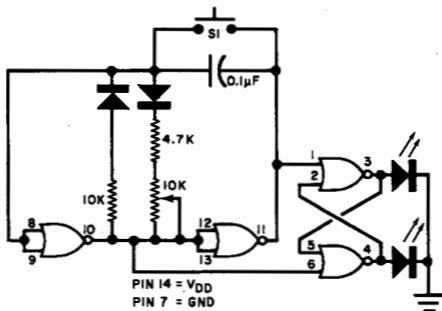


Another Way of Doing It

I noted with interest the CMOS coin tosser circuit in the April 1980 "Project of the Month" column. A circuit that works equally well can be built with a single 4011 or 4001 CMOS IC, half of either used as the clock, the other half as a bistable multivibrator, as shown here.



(Note that IC pin numbers in the diagram apply for both the 4001 and 4011.) With this circuit, it is necessary to adjust for a 50% clock duty cycle, using the potentiometer. If you don't have an oscilloscope to do this, simply measure the direct current flowing through each LED while adjusting the pot. When the same current level flows through each LED, the clock will be adjusted for a 50% duty cycle. —Ed Johnston, Oshawa, Ontario, Canada.