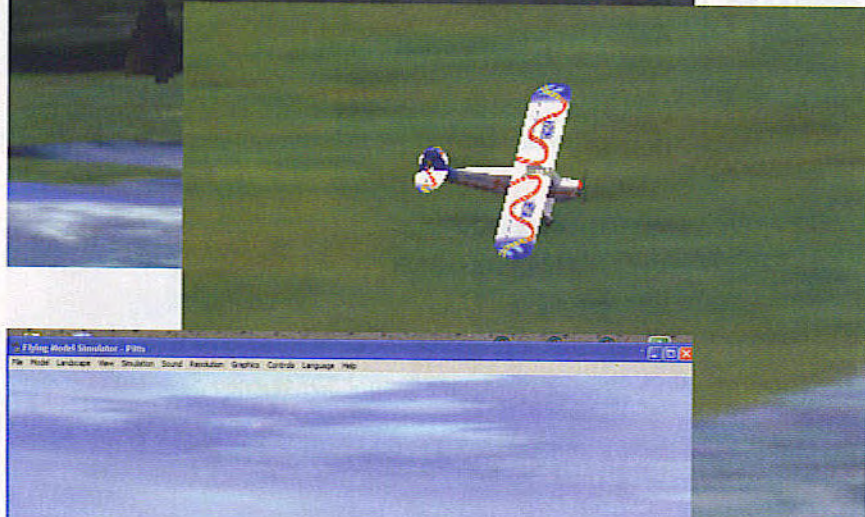


FMS Flight Simulator Encoder

Practice without crashing your models

By Dean Sarelius

d.sarelius@bigpond.com



We all know that even the best pilots spend many hours practising on flight simulators before taking to the real thing, so why should it be any different for radio control planes? With the FMS R/C Flight Encoder described here you can polish your flying skills and gain the valuable experience you need without having to invest in a radio control or even to build a model airplane. In fact the FMS encoder will even allow you to use your own radio control to further enhance your flying ability.

Last year the author purchased a JR 4-channel radio control (R/C) and built his first electric powered plane. Unfortunately the maiden flight was a disaster so a more serious look at flight simulators was in order. Unfortunately, the cost of the so called professional simulators was too much to justify. Searching the Internet, a website called FMS was found.

FMS (Flying Model Simulator) is a freeware 3D flight simulator program developed and written by Roman & Michael Möller. FMS has been compiled to run in both DOS and Windows and with thanks to Roman and Michael it is available as a free download from their website http://n.ethz.ch/student/mmoeller/fms/index_e.html.

The FMS simulator provides control of planes and helicopters either by keyboard, joystick, parallel port or the serial port. The keyboard and joystick options are fine but if you wish to practice flying planes with your own radio control it is necessary to

use an adapter which converts the 'buddy' signal from the radio into data to interface to the computer. More about this further on.

A brief history

In the 1960's two engineers, Doug Spreng and Don Mathers of NASA, developed the original digital proportional control system and a standard was set for the type of pulses required to control servos in radio control applications. With the Mathers and Spreng pulse position modulation system (or PPM) pulses are transmitted — five pulses for a 4-channel, six for a 5-channel and so on. It is the space between these pulses which determines the position for the servos. These pulses are modulated such that the position between them is allowed to vary between 1 ms and 2 ms. For a 1.5-ms delay between pulses the servo would remain at centre, while anything less than 1.5 ms would force the servo to turn anti-clockwise and

anything above would make it turn clockwise. The greater the time delay positive or negative from 1.5 ms the further the rotation of the servo. When the encoder is used to interface to your radio control, it is the time delay between these pulses which is converted into numerical form to interface to the computer.

There are a number of different ways to obtain the PPM signals from your R/C radio and this will depend on which radio you have. More about this later.

So how does the encoder work?

The encoder can work 'stand alone', without any need for a radio control. In this mode you simply plug it into the serial port of your computer and use both joysticks as you would a normal R/C.

In the second mode of operation you will need the PPM signal from your radio. Once you have connected this signal you only need to press down on the joystick (actuating the internal switch) to toggle the mode so that the PPM signal from your radio control is used to interface to the simulator. In this mode you use the encoder to decode the PPM signals

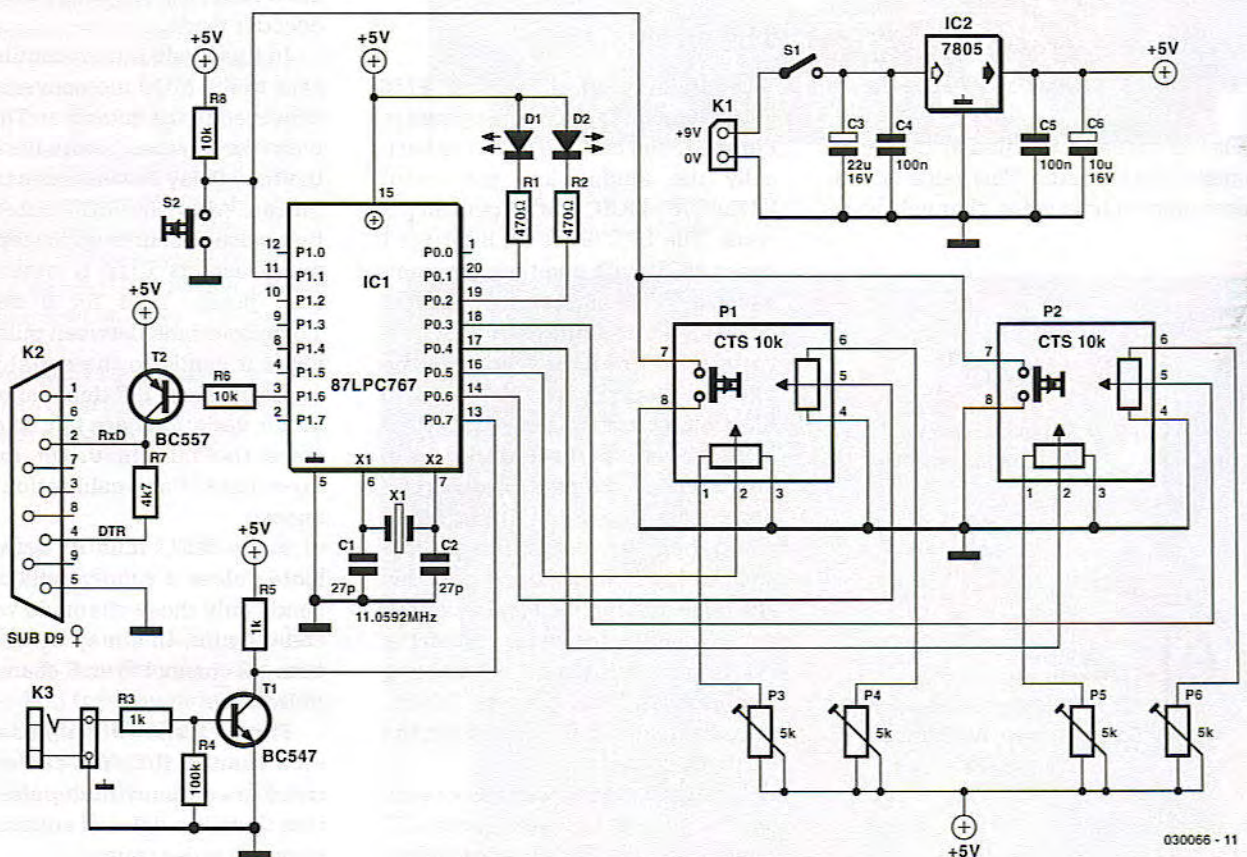


Figure 1. Circuit diagram of the FMS Encoder. All intelligence is vested in microcontroller IC1. Connector K3 allows you to connect your own R/C transmitter unit via its 'buddy/trainer' outlet.

from the radio and convert them into serial data for the computer. You are now using your own radio control to fly the virtual models, so with practice you gain confidence flying with your own R/C.

Within FMS options for 'Control' you will find the 'Serial PIC-interface'. You can choose from two options, but it is the 19200 Baud / 0xFF Sync which this design is set to run with. Make sure to select the correct COM port and set it up in the following way:

- 19200 baud
- 8 bit data, 1 stop bit, no parity
- RTS set to HI
- DTR set to LOW

With the FMS encoder plugged in and the correct COM port set up and calibrated you are ready to start flying.

The encoder sends one packet for all channels. Every packet starts with 0xFF and a byte is added with a value between 0 and 254 (0x00 to 0xFE hex) which provides the information for the servo position. Since 0 to 254 values are available for a range of 1 ms to 2 ms, the value which equates to 1.5 ms or centre position is 127 (0x7F hex).

So for a 4-channel R/C with all servos in the neutral position the data being sent to the computer would look like this:

Pause 0xFF 0x7F 0x7F 0x7F 0x7F Pause
0xFF 0x7F 0x7F 0x7F 0x7F Pause etc.

The pause is actually the pause between PPM signals from the radio. This value would vary depending on how many channels your

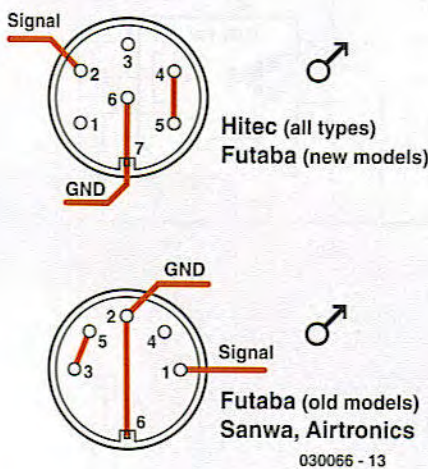


Figure 3. Signal functions on the buddy/trainer socket of some commonly used R/C transmitters. If yours is not shown, consult the owners manual or ask help from fellow FMS users via the FMS Forum.

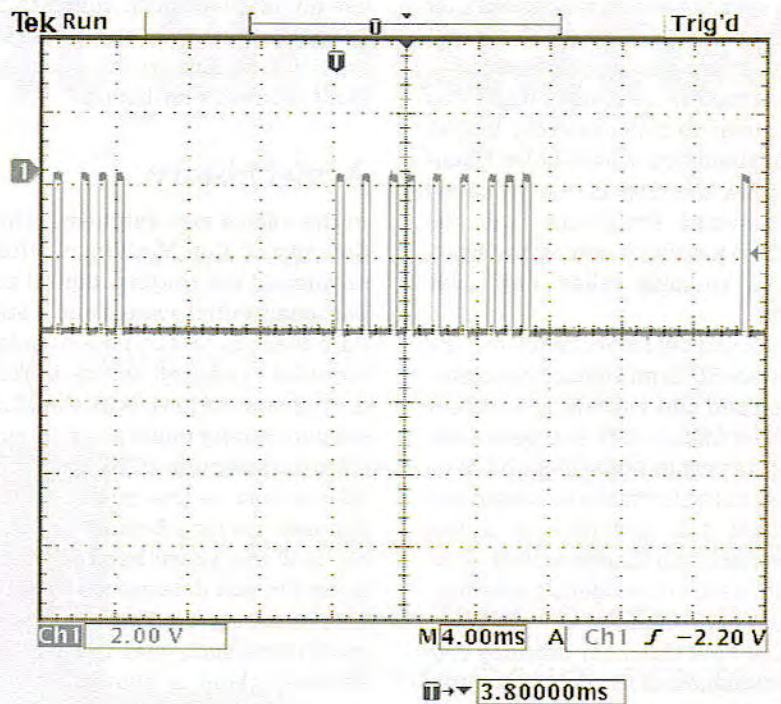


Figure 2. Pulses captured from an 8-channel R/C.

R/C generates — the more channels, the shorter the pause.

The circuit

The circuit diagram of the FMS Flight Simulator Encoder appears in **Figure 1**. You can see that it is basically the Philips low pin count P87LPC767 MCU, that's doing all the work. The LPC767 is an 8-bit 8051 based MCU with one-time programmable (OTP) PROM and four (!) channels of 8-bit analogue to digital converters. A programmer for the LPC76x family was described in *Elektor Electronics* December 2003.

At power-up the encoder is in **SIM mode**, reading the joystick positions from the four 10-kΩ linear potentiometers contained in joysticks P1, P2, then converting this analogue information into packets of data to send to the serial port on the PC. To provide a means of trimming the controls, 5-kΩ presets (P3-P6) have been added in series with the joysticks pots.

To engage the **R/C mode** (which allows you to use your own R/C transmitter) you simply press down on either of the two joysticks to activate an internal tactile switch. If the joysticks are not fitted, the same is

achieved by pressing S2. Pulling the P1.1 port line to ground causes the MCU firmware to change to the R/C encoder mode.

In this mode pulses continuously sent to the MCU are converted and conveyed to the computer. The MCU waits for a pause before it samples the time delay between consecutive pulses. After the MCU detects the first pulse, it counts up in steps of 10 microseconds until it detects the next pulse. Thus for a delay of 1.5 milliseconds between pulses, the value it sends to the serial port is approximately 127 decimal or 0x7F. Minor variations are not so critical since the built-in driver for FMS takes care of any calibration differences.

If the MCU fails to detect any more pulses it simply bails out and sends only those channels which it could count, this may be anything from a 2-channel to an 8-channel R/C pulse train.

Figure 2 shows the pulses from an 8-channel R/C. You can see that there are actually nine pulses, and that there is a delay of around 10 ms between pulse trains.

It is the inverted version of these pulses which are sent to buffer transistor T1. These pulses are inverted

COMPONENTS LIST

Resistors:

- R1,R2 = 470 Ω
- R3,R5 = 1k Ω
- R4 = 100k Ω
- R6,R8 = 10k Ω
- R7 = 4k Ω
- P1,P2 = mini joystick, CTS model 25A104A60TB (order code CTS25A from www.dil.nl)*
- P3-P6 = 5k Ω preset

Capacitors:

- C1,C2 = 27pF
- C3 = 22 μ F 16V axial
- C4,C5 = 100nF
- C6 = 10 μ F 16V axial

Semiconductors:

- D1 = LED, green, 3mm
- D2 = LED, red, 3mm
- IC1 = 87LPC767BN, programmed, order code **030066-41**
- IC2 = 7805CP
- T1 = BC547B
- T2 = BC557B

Miscellaneous:

- K1 = 9-V battery with clip-on leads
- K2 = 9-way sub-D socket (female), PCB mount
- K3 = 3.5mm mono jack socket, chassis mount
- S1 = on/off switch
- S2 = pushbutton, 1 make contact
- X1 = 11.0952MHz quartz crystal PCB, order code **030066-1**
- 3 wire links
- RS-232 cable (non-crossed)
- Case, e.g., Pactec WM-46 (Conrad Electronics # 54 13 03)

* Worldwide distributor information from www.ctscorp.com

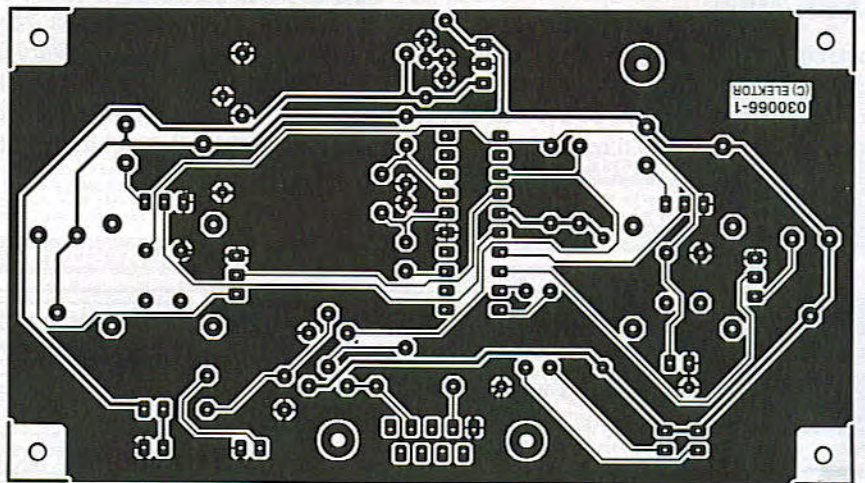
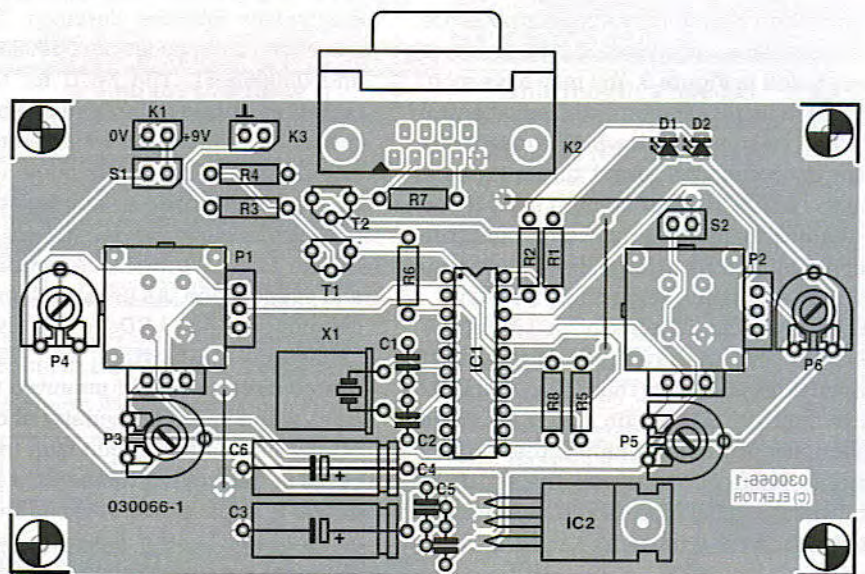
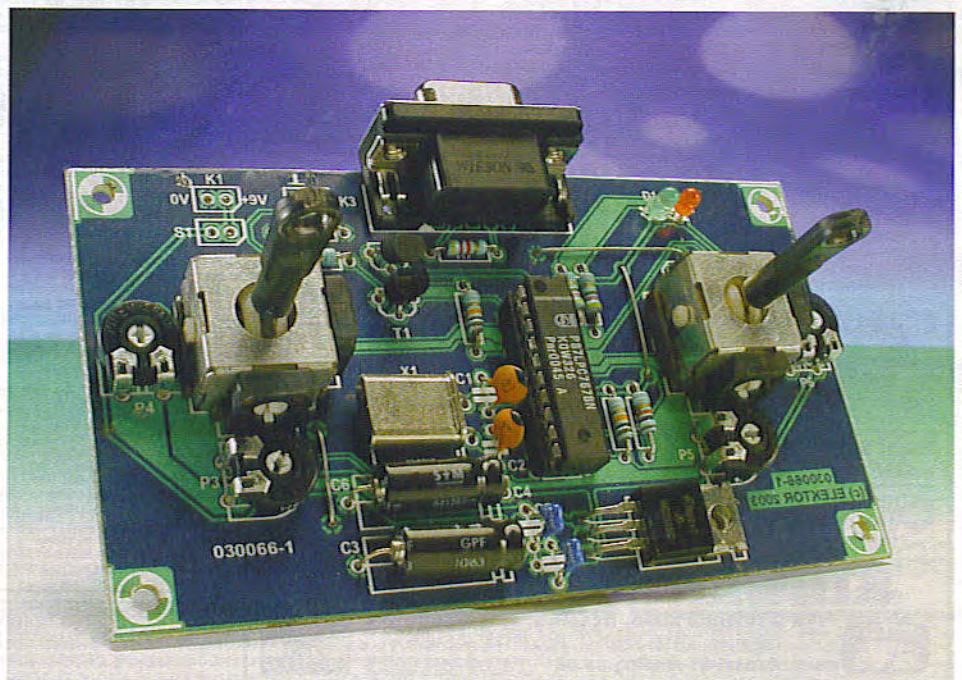


Figure 4. Copper track layout and component mounting plan of the PCB designed for the FMS Encoder (board available ready-made).



by T1 thus bringing them back to normal before they are sent to MCU pin13.

Output data from MCU port line P1.6 (pin 3) is buffered by T2, with R7 providing the required level shifting to drive the RS232 port.

Only two wires are required from your R/C radio to interface to the

Figure 5. Our finished and fully working prototype.

FMS encoder. Where these connections are will depend on what type of R/C you have. A few are listed in **Figure 3**. You may have more information available from your radio control manual. If you are unsure which connections to use then don't be afraid to experiment since the buffered input is quite safe. If you fail to place them the right way around the encoder will behave erratically — just swap them over and everything should be okay.

The whole circuit runs off a single 9-V (6F22) battery and draws only 21 mA, most of which is consumed by the LEDs D1 and D2 which indicate SIM mode and R/C mode respectively. A 7805 regulates the battery supply down to 5 V to power the MCU. At least five hours play time should be available from a standard 9-V battery.

Construction

Construction of the FMS Flight Simulator Encoder board should be easy if you use a ready-made printed circuit board and a programmed MCU supplied through the *Elektor*

Electronics Readers Services. The respective order codes are **030066-11** and **030066-41**. The MCU for this project is only available ready-programmed. The author receives royalty payments for every copy sold hence no hex code or source code files can be supplied.

The PCB (**Figure 4**) is spacious and single-sided. As usual, polarized components like LEDs, electrolytic capacitors, transistors and integrated circuits should mounted the right way around on penalty of creating a hard to find circuit fault (best case) or destroying them when the power is applied (worst case). Don't swap T1 and T2, the devices looking identical but being complementary (npn and pnp respectively).

The MCU being the most expensive component, it really deserves to be fitted in a good quality IC socket. However, it should not be fitted in the socket before you have verified

and approved the presence of the +5 volt supply voltage at a number of relevant points in the circuit, for example, IC1 socket pin 15, the emitter of T2 and the anode wires of LEDs D1 and D2. Okay so far? Then switch off and insert the MCU, observing the position of the notch on the PCB overlay.

Pinheader strips beside joysticks P1 and P2 are provided to connect joysticks that do not fit the board, or an old R/C of which the RF sections are faulty or even missing.

Finally

Users of the Encoder described in this article are encouraged to communicate with other FMS users via the Forum which can be accessed via the FMS homepage. Happy flying!

(030066—1)

Advertisement

Special Offers

TEKTRONIX 2445A £425
4Ch 150MHz Delay, Cursors etc. Supplied with 2 Tektronix probes.

Tektronix 2232 Digital Storage Scope. Dual trace 100MHz 100MS with probes. Only **£525**
H.P. 54501A Digitizing Osc. 100MHz 4Ch **£425**
CIRRUS CRL254 Sound Level Meter with Calibrator 80-120dB LEO **£95**
BECKMAN HD110 Handheld 3.5 digit DMM 28 Ranges with Battery, leads & carrying Case **£30**
WAYNE KERR B424 Component Bridge **£50**
RACAL 9300 True RMS Voltmeter 5Hz-20MHz usable to 60MHz **£50**
RACAL 9300B as above **£75**

H.P. 3312A Fun Gen 0.1Hz-13MHz AM/FM Sweep/Tr/Gate/Burst etc. Sine/Sq/Tri/Ramp/Pulse **£300**
FARNELL AMM295 Automatic Mod Meter 1.5MHz-2GHz. Unused **£300**
FARNELL DSG1 Low Freq Syn Sig Gen **£95**
Low distortion TTL/Square/ Pulse Outputs etc.
FLUKE 8086A Handheld True RMS DMM 4.5 digit **£150**
H.P. 3310A Fun Gen 0.005Hz-5MHz **£125**
FARNELL LFM4 Sine/Sq Oscillator 10Hz-1MHz. Low distortion. TTL Output. Amplitude meter. **£90**
H.P. 545A Logic Probe with 546A Logic Pulser and 547A Current Tracer **£90**
FLUKE 77 Multimeter 3.5 digit **£70**
FLUKE 77 Series **£60**
HEME 1100A Colour pattern generator. In Carrying Case **£60**
BLAC 1000 Colour pattern generator **£60**

THURLEY/THUNDER PSU PL3200MHz 0-32V - 0.2A Twice (late colours) **£225**

Racal 9008 Automatic Modulation Meter 1.5MHz - 2GHz **£95**

Datron 1000 High Quality 6.5 Digit Bench Multimeter True RMS/4 wire/Current Converter **£225**

Just In ...

H.P. 8640A Signal Generator AM/FM 500kHz-512MHz **£250**
KENWOOD CS4025 Oscilloscope Dual Trace 20MHz **£125**
Leader LB0523 Oscilloscope Dual Trace 35MHz **£140**
GOULD OS300 Oscilloscope Dual Trace 20MHz **£95**
NATIONAL PANASONIC VP7705A Distortion Analyser **£125**
KENWOOD VT176 Millivoltmeter 2Channel **£50**
KENWOOD FL180A Wow & Flutter Meter **£50**
KENWOOD FL180A Wow & Flutter Meter Used **£75 New**
Bird 43 Watt Meter **£75**
Elements for above **£25**

MARCONI 893C AF Power Meter. Sinead Measurement. Unused **£100** Used **£60**
MARCONI 2610 True RMS Voltmeter. Autoranging 5Hz - 25MHz **£195**
GOULD J38 Sine/Sq Osc 10Hz - 100kHz Low distortion **£75 - £125**
AV08 Mk5 in EverReady Case, with leads etc **£50**
Other AV08s from **£25**
GOODWILL GV7427 Dual Ch AC Millivoltmeter 10mV-300V 12 ranges 10Hz-1MHz **£50**
SOLARTRON 7150 DMM 6.5 digit True RMS. 100MHz. 18 ranges **£200**
SOLARTRON 7150 Plus **£200**

High Quality RACAL Meters
9904 Uni. Time **£50**
18 **£75**
18 **£75**

3433M LCR Database. Digital Measurements of R,L,C,L,D.
HUNTRON TRACKER Model 100 **£125**

Portable Applications Meter
Megger **£180**

FARNELL L30 3kW Autoranging **£2000**
FARNELL A190 3kW Autoranging **£2000**
FARNELL L30 PSU 0-60V; 0-50A 1000W **£1000**
FARNELL AP6050 1KW Autoranging **£1000**
FARNELL H6050 0-60V 0-50A **£750**
FARNELL H6025 0-60V; 0-25A **£400**
Power Supply HPS3010 0-30V; 0-10A **£140**
FARNELL Dual PSU XA35-2T 0-35V 0-2A Twice QMD. LCD Display **£180**
FARNELL L30-2 0-30V; 0-2A **£80**
FARNELL L30-1 0-30V 0-1A **£60**
Many other Power Supplies available.
Isolating Transformer 240V In/Out 500VA **£40**

Farnell DTV 12-14 Oscilloscope

Dual Trace 12 MHz TV Coupling **Only £75**

Farnell LFI Sine/Sq Oscilloscope

10Hz - 1 MHz **Only £75**

OSCILLOSCOPES

TEKTRONIX TDS390 Dual Trace 200MHz 16S unused **£1500**
TEKTRONIX TDS320 Dual Trace 100MHz 500MS **£1200**
TEKTRONIX TDS310 Dual Trace 50MHz 200MS **£950**
LECRYD 9400A Dual Trace 175MHz 5G **£1000**
HITACHI VC6523 Dual Trace 20MHz 200MS **£950**
PHILIPS PM3092 2+2Ch 200MHz Delay **£950**
PHILIPS PM3093 2+2Ch 100MHz Delay etc As New **£800**
PHILIPS PM3094 2+2Ch 100MHz Delay etc As New **£750**
TEKTRONIX TDS310 50MHz 200MS Cursors etc **£1500**
TEKTRONIX TDS310 50MHz 200MS Cursors etc **£900**
TEKTRONIX TDS310 50MHz 200MS Cursors etc **£450**
TEKTRONIX TDS310 50MHz 200MS Cursors etc **£150**
PHILIPS PM3065 2+1Ch 200MHz Delay **£775**
PHILIPS PM3065 2+1Ch 200MHz Delay **£775**
PHILIPS FM3217 100MHz 500MS **£200 - £250**
PHILIPS FM3217 100MHz 500MS **£200 - £250**
GOULD OS1100 200MHz 200MS **£150**
PHILIPS PM3093 Dual Trace 200MHz Component Tester **£275**
PHILIPS PM3093 Dual Trace 200MHz Component Tester **£200**
FARNELL Dual Trace 20MHz Component Tester **£125**

Other Oscilloscopes Available
WILTRON PM3065 Swept Freq Synthesizer 6747A-20... **£5000**
10MHz - 20MHz
MARCONI 2022E Synthesised AM/FM Sig Gen **£525 - £750**
10kHz - 1.01GHz LCD Display etc
H.P. 8657A Syn 100kHz - 1040MHz Sig Gen **£2800**
H.P. 8656B Syn 100kHz - 990MHz Sig Gen **£1850**
H.P. 8656A Syn 100kHz - 990MHz Sig Gen **£995**
R&S APW62 Syn 1Hz-250kHz Sig Gen **£425**
Balanced/Unbalanced output LCD Display
PHILIPS PMS328 Sig Gen 100kHz-180MHz with 200MHz-£550
Freq Counter IEEE **£250**
RACAL 9081 Synth AM/FM Sig Gen 5MHz-520MHz **£250**
H.P. 3325A Synth Function Gen 21MHz **£800**
MARCONI 8900 Amplitude Analyser **£1500**
H.P. 4162A Impedance Analyser **£5000**
H.P. 4275A LCR Meter 10kHz-10MHz **£2750**
H.P. 9925A Distortion Analyser **£2800**
WAYNE KERR Inductance Analyser/3245 **£1600**
H.P. 8112A Pulse Generator 50MHz **£1250**
MARCONI 2440 Freq Counter 20GHz **£1000**
H.P. 5350B Freq Counter 20GHz **£2000**
H.P. 5342A 10Hz - 18GHz Freq Counter **£800**
H.P. 1650B Logic Analyser 80 Channel **£1000**
MARCONI 2305 Mod Meter 500kHz - 2GHz **£750**

Spectrum Analysers

H.P. 8561B 50Hz - 6.5GHz **£6500**
H.P. 8560A 50Hz - 2.9GHz Synthesised **£5000**
H.P. 8594E 9kHz-2.9GHz **£4500/£5000**
H.P. 8591E 1MHz-1.8GHz 75 ohm **£3500**
H.P. 853A with 8559A 100kHz-21 GHz **£2250**
H.P. 8558B with Main Frame 100kHz-1500MHz **£1250**
H.P. 3585A 20Hz-40MHz **£3000**
H.P. 3580A 5Hz - 50kHz **£800**
ADVANTEST RA131B 10kHz-3.5GHz **£3500**
EATON/Altech 757 0.001-220GHz **£1500**
MARCONI 2382 100Hz-400MHz High Res **£2000**
MARCONI 2370 30Hz-110MHz **£500**
H.P. 182 with 8557 10kHz-350MHz **£500**

H.P. 141T Systems
8553 1 kHz-110MHz **£500**
8554 50kHz-1250 **£750**
8555 10MHz-1250 **£900**
TEKTRONIX 887 100kHz-100MHz **£1250**
TEKTRONIX 887 100kHz-100MHz **£750**
H.P. 3372A Frequency & Time Interval Analyser **£250**
H.P. 8754A Network Analyser 40MHz-1300MHz **£1250**
H.P. 3577A Network Analyser 5Hz-200MHz **£1000**
H.P. 53310A Modulation Domain Analyser Opt 001/003 **£500**
DNO S0XK1 CF300 Portable FFT Analyser **£1500**

H.P. 66312A PSU 0-20V / 0-2A **£400**
H.P. 66311B PSU 0-15V 0-3K **£400**
H.P. 66309D PSU Dual 0-15V 0-3A/0-12V 0-1.5A **£750**
H.P. 6632B PSU 0-20V / 0-5A **£500**
H.P. 6623A PSU Triple Output ranging from 0-7V 0-5A to 0-20V 0-4A **£850**
H.P. Agilent 34401A DMM 6.5digit **£480/£450**
H.P. 3478A DMM 5.5 digit **£275**
FLUKE 45 DMM Dual Display **£490**
ICEHTLEY 2010 DMM 7.5 digit **£1450**
KEYTHLEY 617 Programmable Electrometer **£1250**
H.P. 4338B Milliohmeter **£1500**
RACAL Counter type 1999 2.6 GHz **£500**
H.P. Counter type 33131A 3 GHz **£850**
H.P. Agilent 33120A Function Gen/ARB **£900/£1000**
100 microHz - 15MHz
SONY/TEKTRONIX AFG320 Arbitrary Function Gen **£1250**
H.P. 8904A Syn Function Gen DC - 600kHz **£1000/£1250**
BLACK STAR JUPITOR 2010 Function Gen 0.2Hz-2MHz **£140** with Frequency Counter
H.P. 8116A Pulse Generator 1mV-50MHz **£1950**
H.P. 8557B Syn Signal Gen 0.1-2080MHz **£2900**
CO-AXIAL SWITCH 1.5GHz **£40**
IEEE Cables **£10**

Radio Communications Test Sets

MARCONI 2955 / 2955R **£1000**
Rohde & Schwarz CMT 0.1-1000MHz **£1500**
SCHLUMBERGER 4040 **£750**

Check Our Website for Latest Prices & Equipment

STEWART of READING

110 WYKEHAM ROAD, READING, BERKS. RG6 1PL
Telephone: (0118) 9268041. Fax: (0118) 9351696
www.stewart-of-reading.co.uk

Callers Welcome Sat-5.30pm Monday to Friday (other times by arrangement)

26

Elektor Electronics 1/2004