



DC
15 **the ball**

Twists and turns like no other vacuum

DC15 key technology;

telescope reach

Quick release wand expands for instant cleaning. No awkward parts to assemble for high-reach cleaning.

Self-adjusting stabiliser

Rear wheels lock in place when the machine is upright, and tuck neatly out of the way when the machine is in use.

Motor location

Patented by Dyson, the motor is suspended inside the ball feature, keeping the centre of gravity low and improving manoeuvrability.

Multi Cyclone technology

Advanced Dyson cyclone technology.

Cleanerhead geometry

The central pivot on the cleanerhead ensures the head maintains perfect contact with the floor even when the machine is turning.

Motorised brushbar

Turn brushbar off at the touch of a button to protect delicate rugs or hard floors.



Product overview

Technical information

Fitting notes

Parts

PAGE

1	Introduction
1	Variants
2	Specifications
2	Electrostatic discharge
3	Electrical testing
4	Electrical circuit & resistance values
5	Electrical fault diagnostic
6	General notes
6	Removing the cleanerhead and yoke assembly
8	Removing and dismantling the yoke assembly
9	Dismantling the cleanerhead
13	Assembling the cleanerhead
17	Assembling and refitting the yoke assembly
19	Refitting the cleanerhead
20	Removing the ball and motor bucket
22	Dismantling the motor bucket
24	Assembling the motor bucket
26	Refitting the motor bucket and ball
27	Removing and dismantling the axlestand
28	Removing the stabiliser
29	Refitting the stabiliser
30	Assembling and refitting the axlestand
31	Removing and dismantling the valve cuff and valve seal
32	Assembling and refitting the valve cuff and valve seal
33	Removing and dismantling the valve assembly
34	Assembling and refitting the valve assembly
35	Removing the powercord assembly and switches
36	Refitting the powercord assembly and switches
37	Removing and refitting the internal cable
38	Removing and refitting the PCB to yoke loom
39	Dismantling the duct assembly
41	Hose/u-bend and wand assemblies
42	Cyclone and bin assemblies
42	Assembling the duct assembly
45	Cleanerhead and yoke assembly
46	Duct, valve and stabiliser
47	Motor bucket and ball
48	Cyclone, bin, wand and hose/u-bend assemblies

Introduction

This manual is written specifically for Dyson trained engineers and covers the DC15 range. The service instructions assume the engineer has the approved tools and test equipment with them.

Variants

Product overview



**DC
15** allergy

HEPA plus Root[®] Cyclone™ for cleaner expelled air
Low reach floor tool - cleans under low beds and sofas

DC15 overview

DC15 is the new unique upright from Dyson, with a whole range of features designed to make vacuuming more efficient and less of a chore. The ball is what makes DC15 unique. By replacing conventional wheels with a single ball, it enables the machine to manoeuvre around furniture and obstacles with just a small turn of the wrist. The central pivot on the cleanerhead ensures that the head maintains constant contact with the floor. To give great pick up and manoeuvrability, there is a separate motor in the cleanerhead that powers the brushbar; this can be turned off at the touch of a button for delicate rugs or hard floors. All DC15 products incorporate a quick-release wand, which expands for instant cleaning and has no awkward parts to assemble.

Specifications

	DC15 allergy
RootCyclone™	✓
Airwatts (constant)	200AW
Pre-filter	Lifetime
Post-filter	HEPA
Mini turbine head	✗
Low reach floor tool	✓
Debris slot	✓
Brush control	✓
Telescope reach wand	✓
Bin capacity	2.5 litres
Main motor	1200W
Brushbar motor	80W
Cable length	7.7m
Maximum reach	11.99m
Height	1120mm
Width	347mm
Depth	384mm
Operational weight	8.65kg

Electrostatic discharge

With the advancement of technology within Dyson products, more sensitive electronic components are being used. Certain variants of Dyson products (**including DC15**) contain Printed Circuit Boards (PCBs) which are made from electronic components that are susceptible to damage by electrostatic discharge.

Electrostatic Discharge or ESD is described as the rapid transfer of electricity from one object to another. Static electrical charge is created by the contact and separation of different materials e.g. the motion of walking can create static electricity, as shoes contact and then separate from the floor. Static electricity is released when two charged objects make contact and this is when sensitive electrical components can be irreversibly harmed.

The damage caused by ESD varies from a product not functioning to a depreciation of the life of a product; therefore it isn't always possible to detect ESD damage.

In order to protect relevant Dyson product and components/assemblies from ESD damage, the following precautions must be taken when repairing or examining product:

Using a socket polarity tester, verify that there is an adequate earth. If there is not an adequate earth, use an alternative adequately earthed socket.

All repair/investigation work must be carried out on an anti-static mat that is earthed via an earthing plug.

All personnel repairing/investigating Dyson product must wear an anti-static wrist strap that is connected to an earthed anti-static mat (see Fig.1, page 3).

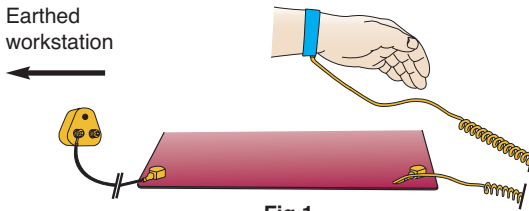


Fig.1

ESD sensitive Dyson components/assemblies must also be handled and stored appropriately. All ESD sensitive components will be labelled with the following logo:



It is important these components are taken out of the packaging only when needed and when suitable earthed ESD protection is being worn/used. Should a component/assembly need to be placed down during machine repair/investigation it is vital that it is placed on the earthed anti-static mat.

Electrical testing

General safety note

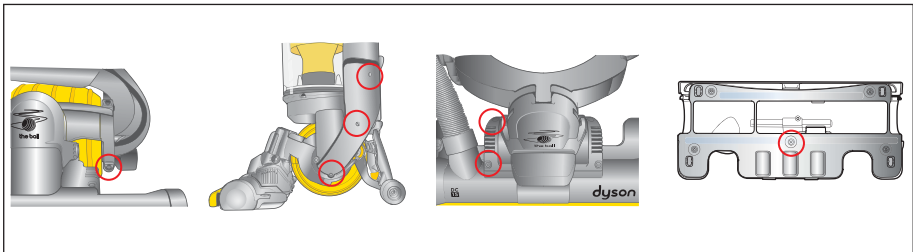
All operating instructions contained within this service manual are intended solely for the use of adequately trained personnel. The instructions assume the service engineer has the correct tools and test equipment to complete the activity. Prior to using any consumer mains supply sockets you must ensure the socket is tested for correct polarity.

Testing DC15 for correct insulation

The following insulation tests **MUST** be carried out prior to and on completion of all services to DC15, and **BEFORE** any functional checks. You must ensure that a full visual inspection of the product is completed prior to any service activity.

Ensure at all times during service and testing that consumers, pets and children are not exposed to any live electrical supply.

Insulation test points

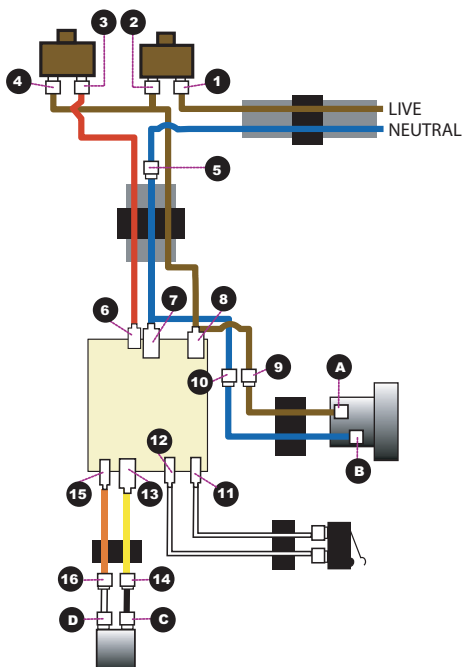


Test results

An insulation test reading of between 2 MΩ and infinity is acceptable.

A reading of below 2 MΩ is not considered safe and further investigation, rectification and testing must be completed before the product is used.

Electrical circuit



Technical info

Electrical resistance values

COMPONENT	TEST BETWEEN POINTS		OHMS
POWERCORD ASSY	PLUG, LIVE PIN	1	MAX 1 Ω
POWERCORD ASSY	PLUG, NEUTRAL PIN	5	MAX 1 Ω
ON/OFF SWITCH	1	2	MAX 1 Ω
BRUSHBAR SWITCH	3	4	MAX 1 Ω
INTERNAL CABLE (LIVE)	2	8	MAX 1 Ω
	8	9	
INTERNAL CABLE (NEUTRAL)	5	7	MAX 1 Ω
	7	10	
INTERNAL CABLE (BRUSHBAR SWITCH, RED)	3	6	MAX 1 Ω
MOTOR BUCKET SEAL/LOOM ASSY (LIVE)	9	VAC MOTOR	MAX 1 Ω
MOTOR BUCKET SEAL/LOOM ASSY (NEUTRAL)	10	VAC MOTOR	MAX 1 Ω
ACROSS VAC MOTOR	A	B	APPROX. 8 Ω
UPRIGHT SWITCH LOOM	11	UPRIGHT SWITCH	MAX 1 Ω
UPRIGHT SWITCH LOOM	12	UPRIGHT SWITCH	MAX 1 Ω
PCB TO YOKE LOOM (YELLOW)	13	14	MAX 1 Ω
PCB TO YOKE LOOM (ORANGE)	15	16	MAX 1 Ω
YOKE LOOM (BLACK)	14	BRUSHBAR MOTOR	MAX 1 Ω
YOKE LOOM (WHITE)	15	BRUSHBAR MOTOR	MAX 1 Ω
ACROSS BRUSHBAR MOTOR	C	D	APPROX 70 Ω

Electrical fault diagnostic

1) When DC15 is switched on in the upright position, the brushbar motor is off. Tilting the machine into normal vacuuming mode will automatically operate the upright switch, turning the brushbar motor on. The brushbar motor can be switched off using the brushbar switch.

2) The vacuum motor of DC15 is fitted with a heat sensitive Thermal Cut-Out (TCO). This will shut the motor down for up to 60 minutes if it reaches a temperature >96 degrees celcius. Excessive temperatures within the motor are usually caused by machine/filter blockages.

3) The brushbar motor of DC15 is fitted with a current sensing protection circuit that will shut the brushbar motor off if it is put under an excessive load (blocked/seized brushbar etc.). The protection circuit will remain off until it is reset.

This is achieved by:

- pressing the brushbar switch.

- pressing the on/off switch.

- standing the machine upright and then re-tilting the machine into normal vacuum mode.

If the cause of the brushbar motor cut-out is not rectified the protection circuit will repeatedly reactivate, preventing the brushbar from turning.

4) The fuse on the PCB assy is fitted for safety purposes. If the PCB fails, and the brushbar motor seizes, the fuse will blow, cutting power to the brushbar motor.

Electrical fault diagnosis

Note: all 'connection' numbers and 'continuity' checks refer to the illustrations on page 4.

No machine power (vac motor and brushbar motor off).

1) Check for damage/electrical failure to the plug/fuse/powercord/connections to on/off switch and the mechanical switch actuation.

2) Check for a loose connection at points **1,2 and 5**.

3) Check continuity of powercord on/off switch/and internal cable.

No power to the vac motor (brushbar motor on in tilt position).

1) Check connections at points **9, 10, A and B**.

2) Check continuity of internal cable and motor bucket seal/loom assembly.

3) Check vac motor continuity and motor brushes, windings, commutator etc.

No power to the brushbar motor (motor vac on).

1) Check connections at points **7,8,13,14,15,16, C and D**.

2) Check the continuity of the internal cable, PCB to yoke loom and the yoke loom assembly.

3) Check brushbar motor continuity and motor brushes, windings, commutator etc.

If all of the checks listed are correct the PCB will be at fault.

Brushbar motor on in upright position (switches off with brushbar switch).

1) Check connections at points **11 and 12**.

2) Check continuity of upright switch and upright switch loom.

3) Check the actuation of the of the upright switch.

If all of the checks listed are correct the PCB will be at fault.

Brushbar switch does not switch brushbar motor off in tilt position.

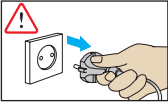
1) Check connection to brushbar switch at points **3,4** and point **6**.

If all of the checks listed are correct the PCB will be at fault.

Brushbar motor on permanently (will not switch off).

1) Check for a short in the upright switch loom.

General notes



Before attempting any repairs it is vital to ensure that the product is totally isolated from the mains supply and that accidental reconnection cannot occur.



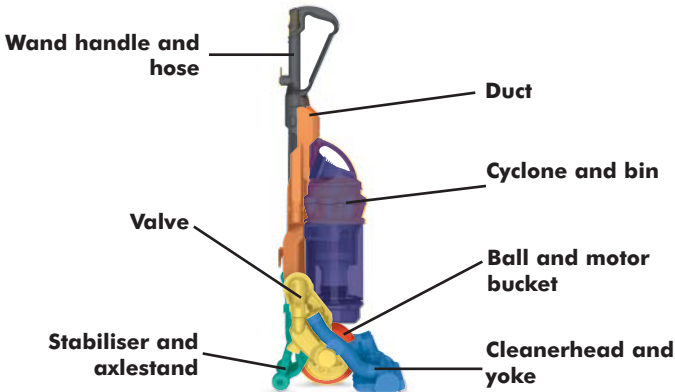
Where this symbol is shown ensure ESD protection is used.



All screws used in DC15 are Torx T15, unless otherwise stated.

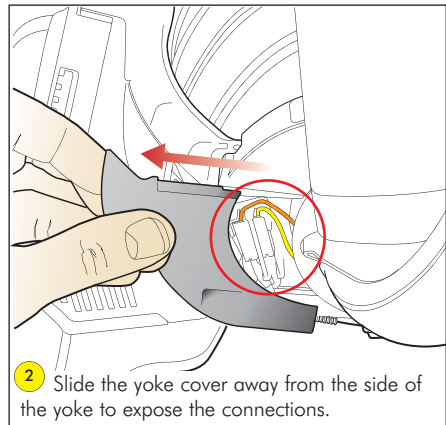
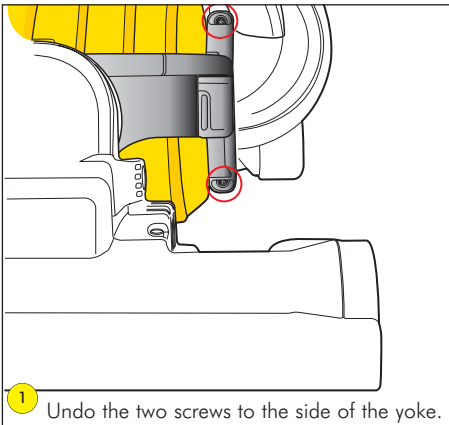
Assembly guide

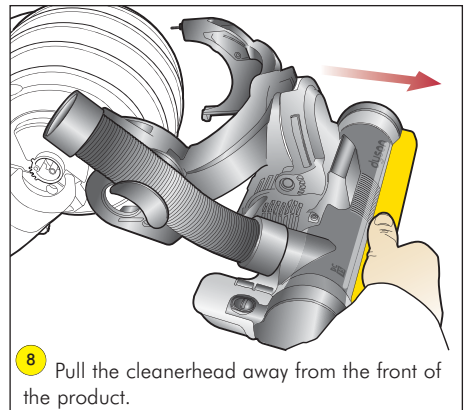
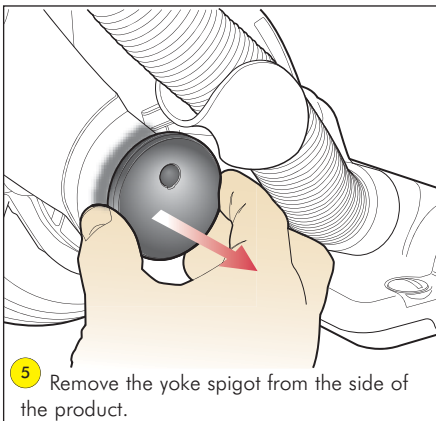
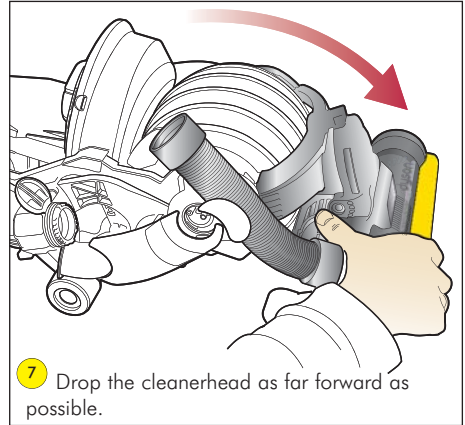
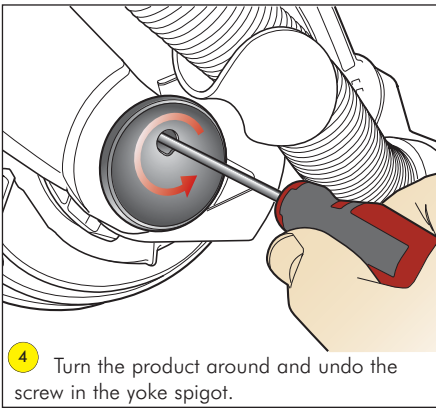
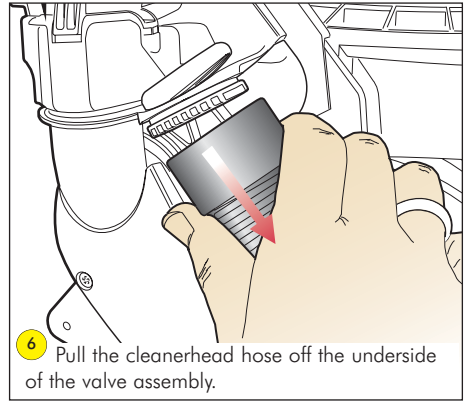
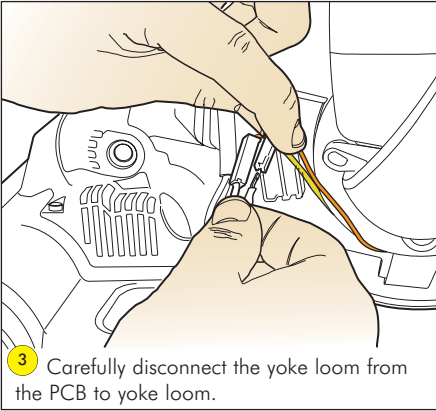
The fitting notes contained within this service manual are separated into the following assembly sections:



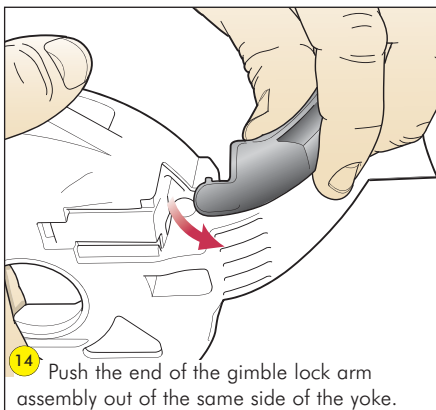
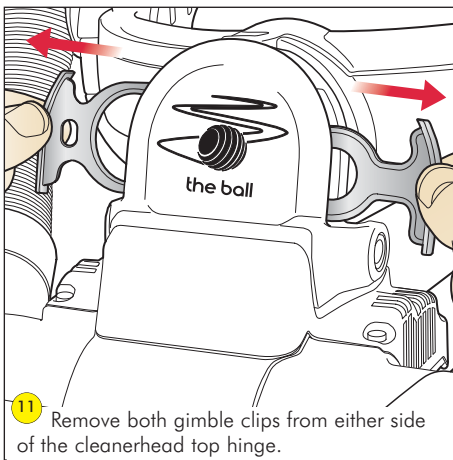
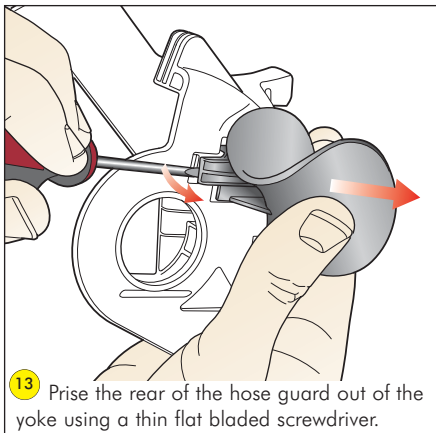
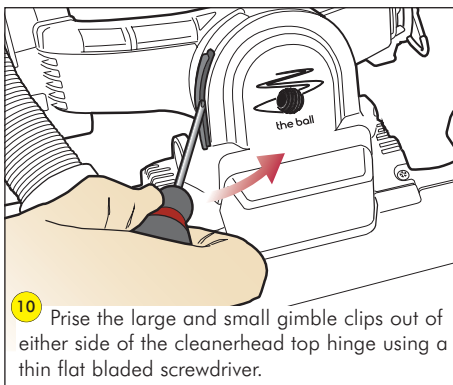
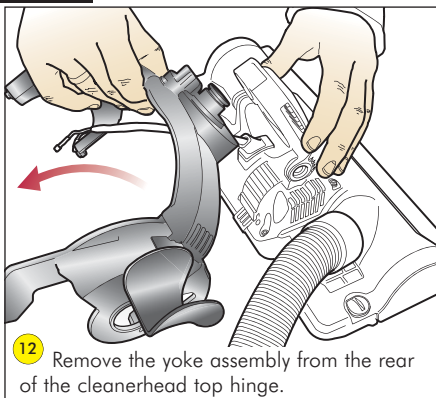
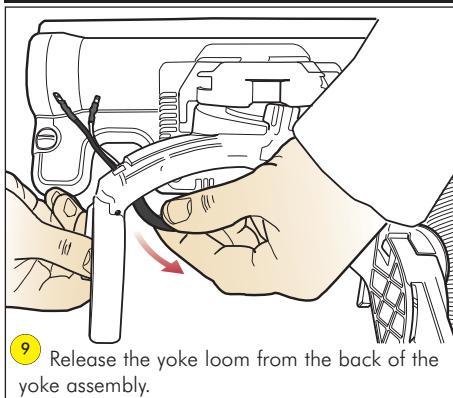
Fitting notes

Removing the cleanerhead and yoke assembly



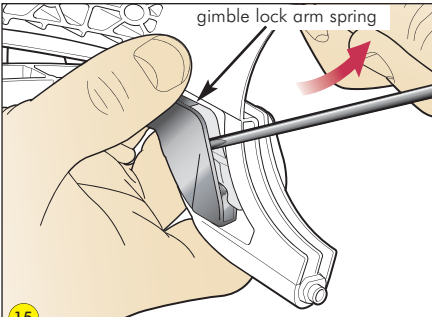


Removing and dismantling the yoke assembly

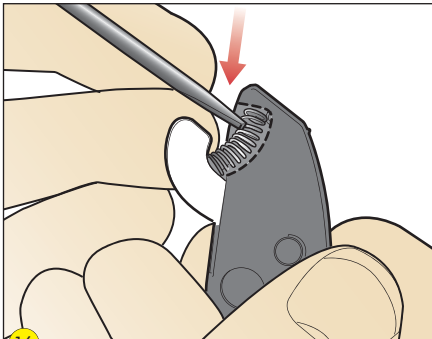


Fitting notes

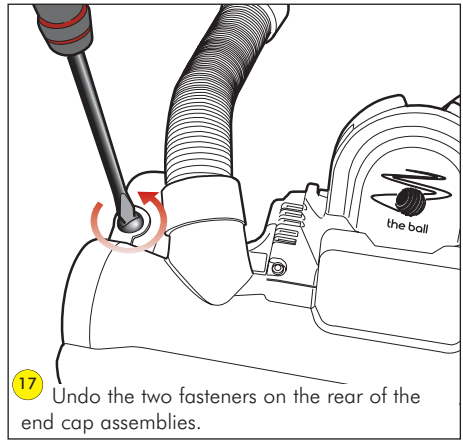
Dismantling the cleanerhead



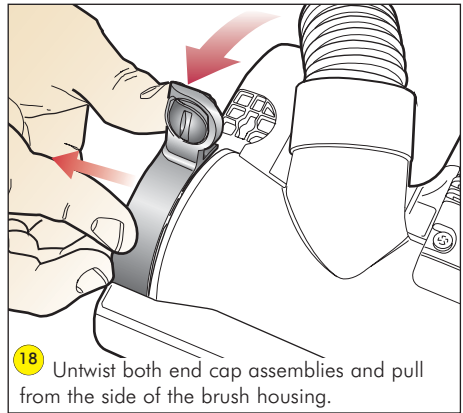
15 Prise the other end of the gimble lock arm assembly out of the yoke using a thin flat bladed screwdriver, ensuring that you retain the gimble lock arm spring.



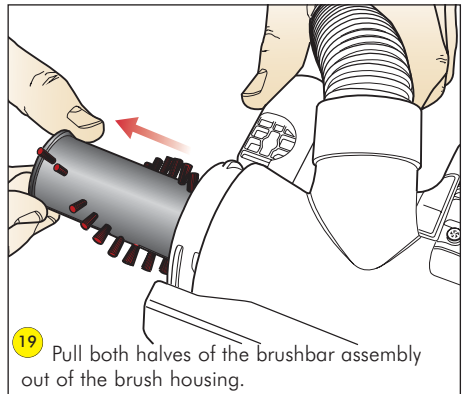
16 Carefully remove the actuator arm spring from the gimble lock arm using a thin flat bladed screwdriver.



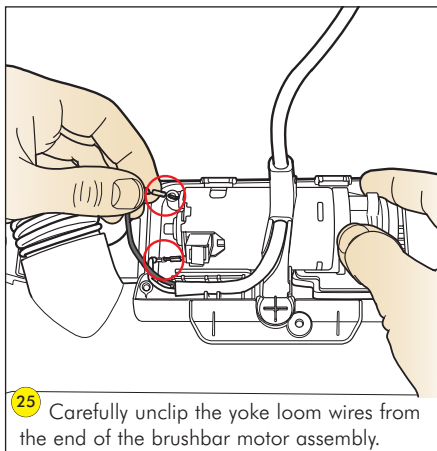
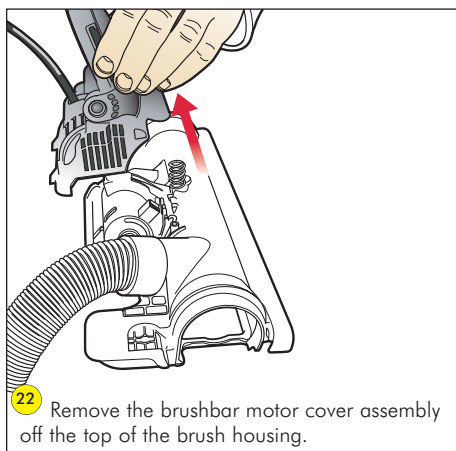
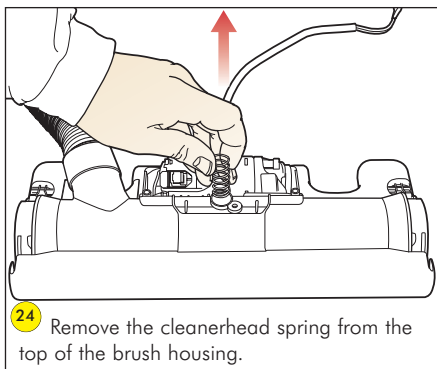
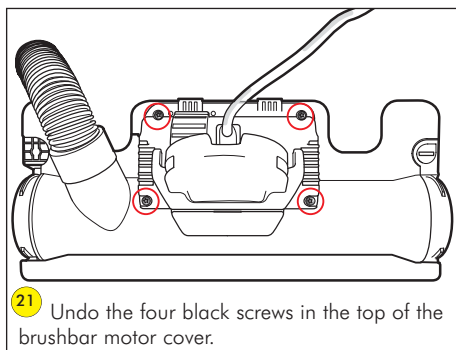
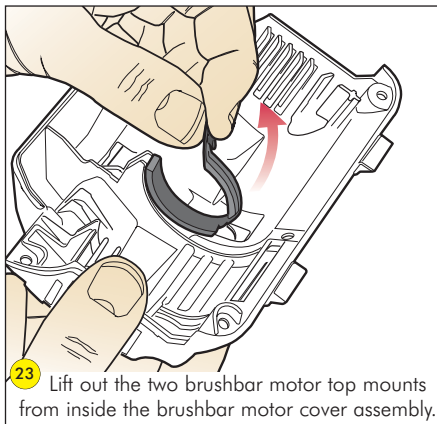
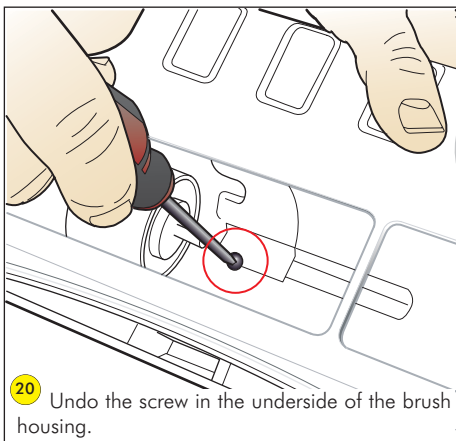
17 Undo the two fasteners on the rear of the end cap assemblies.

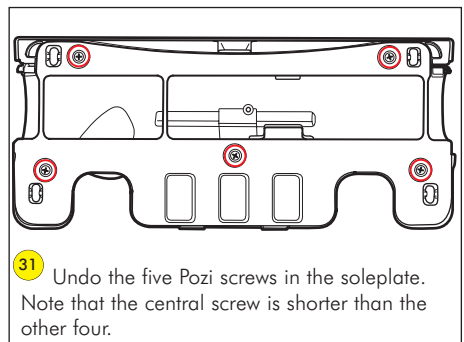
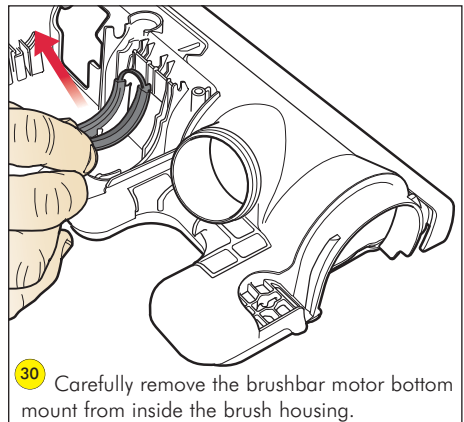
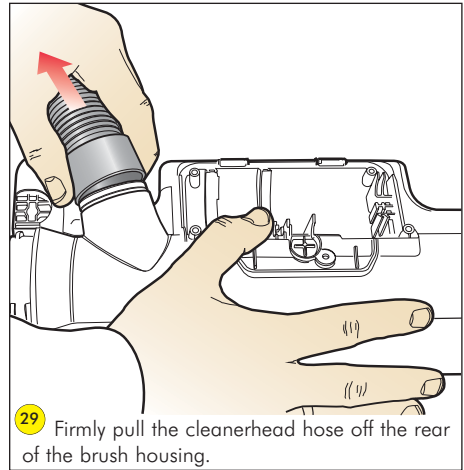
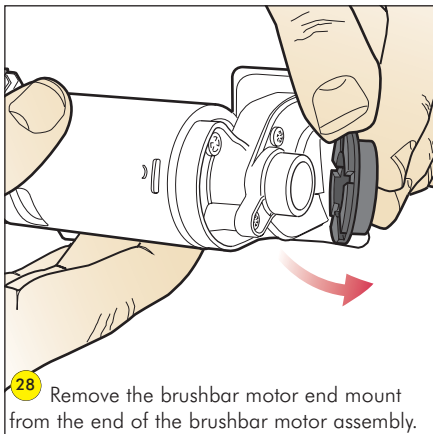
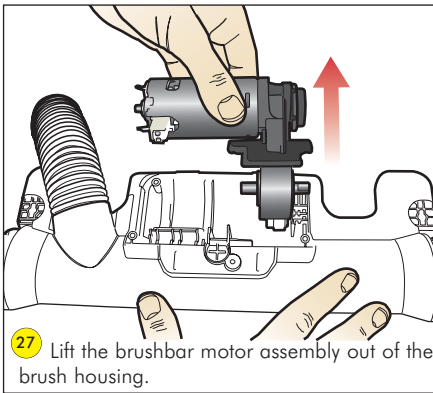
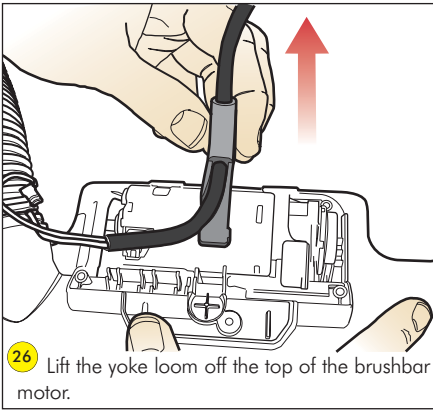


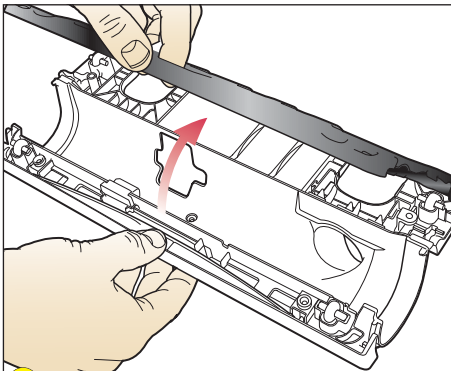
18 Untwist both end cap assemblies and pull from the side of the brush housing.



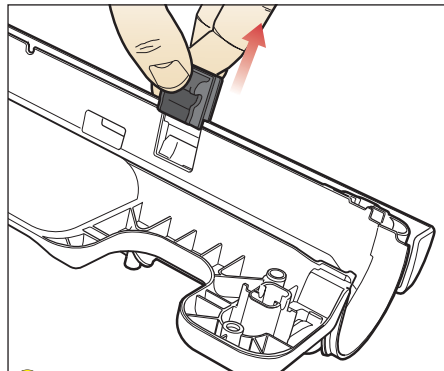
19 Pull both halves of the brushbar assembly out of the brush housing.



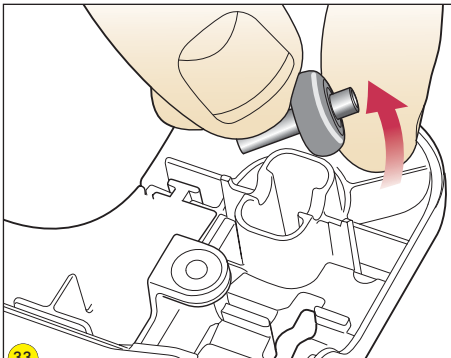




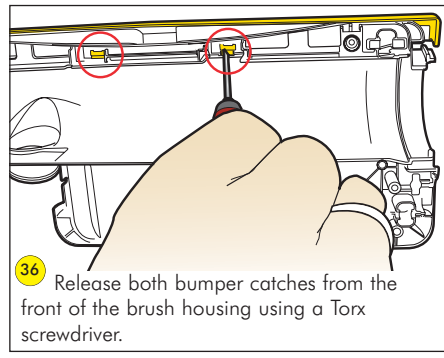
32 Lift the front edge of the soleplate off the brush housing. Then unclip from the rear.



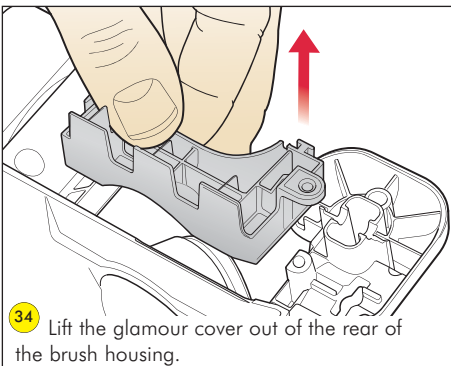
35 Slide out the brushbar motor front mount from the front of the brush housing.



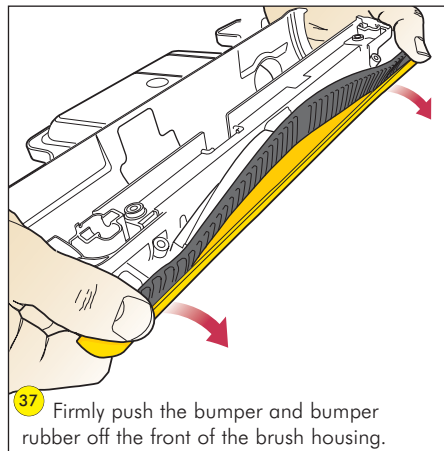
33 Lift the four soleplate wheels and axles out of the underside of the brush housing. Slide the wheels off the axles.



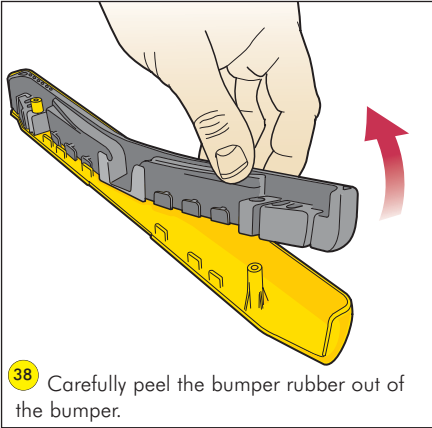
36 Release both bumper catches from the front of the brush housing using a Torx screwdriver.



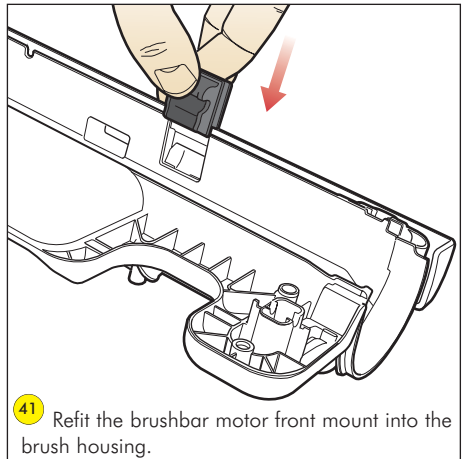
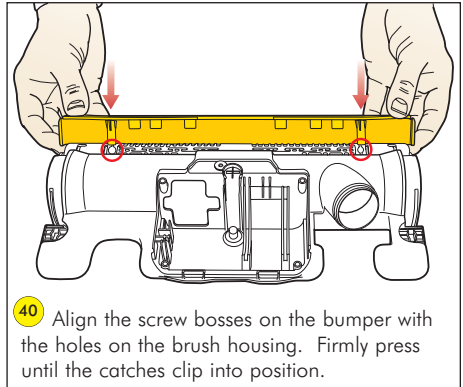
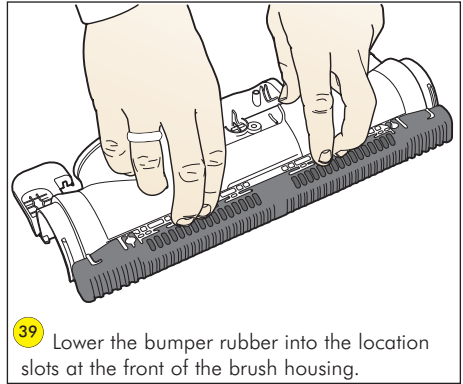
34 Lift the glamour cover out of the rear of the brush housing.

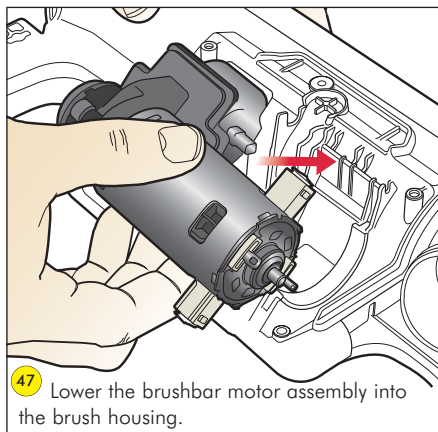
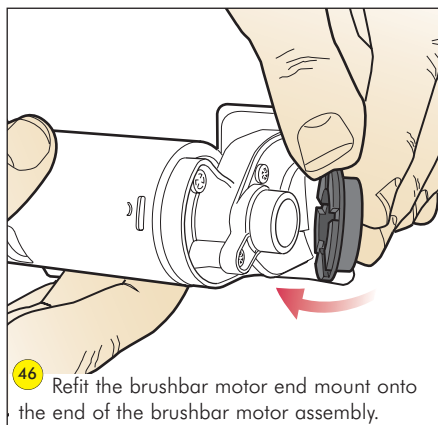
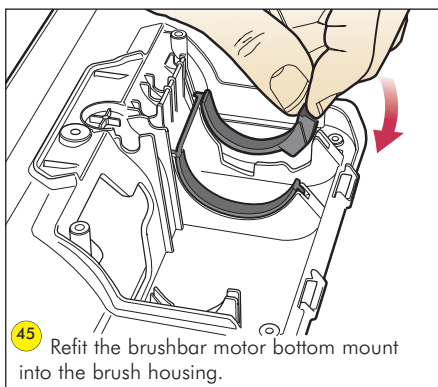
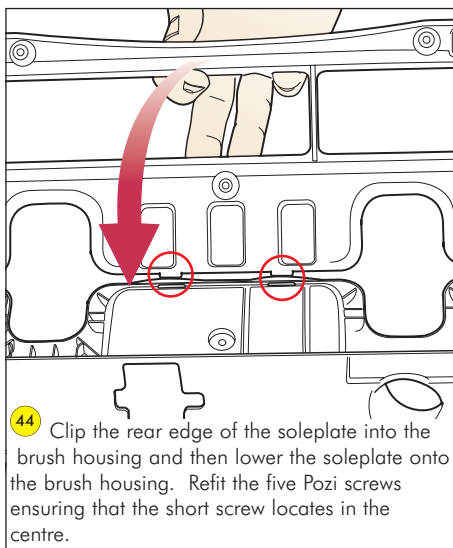
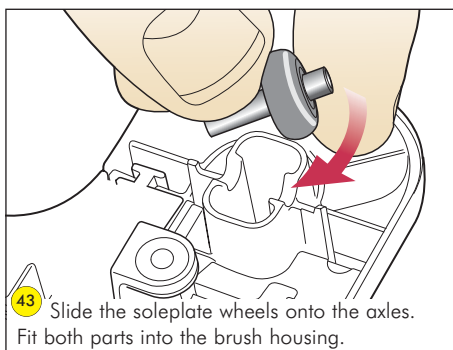
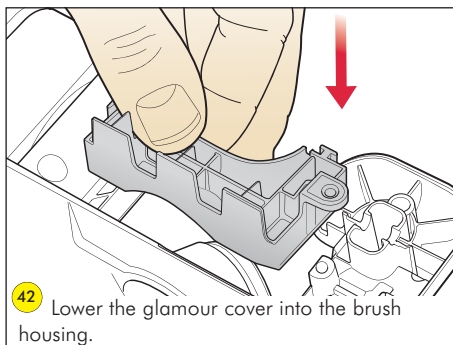


37 Firmly push the bumper and bumper rubber off the front of the brush housing.

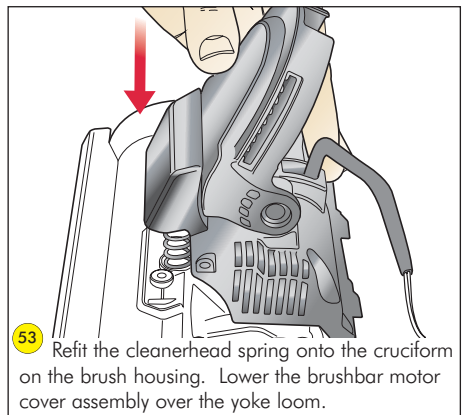
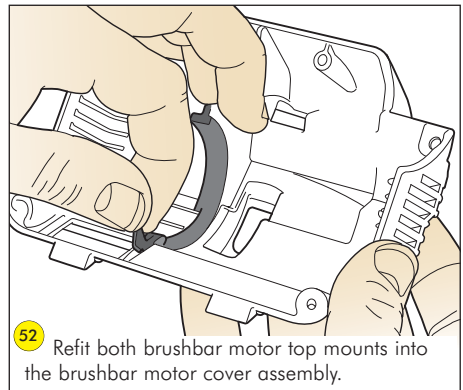
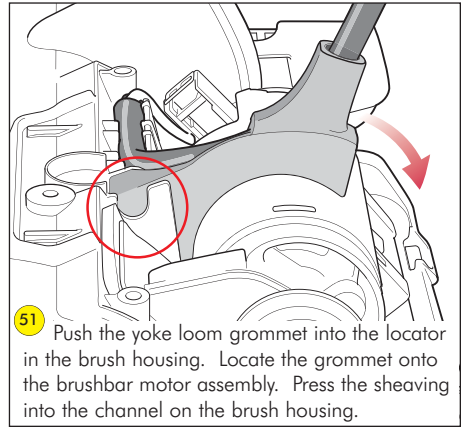
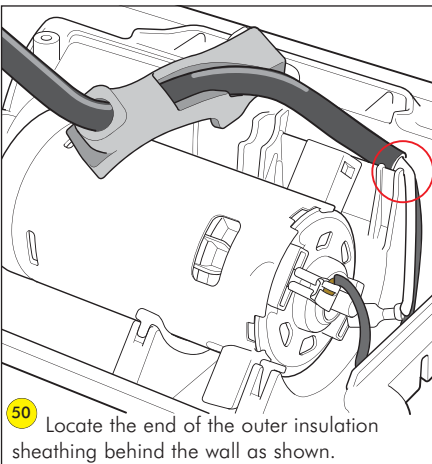
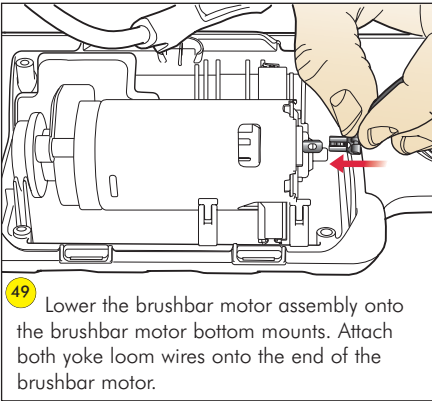
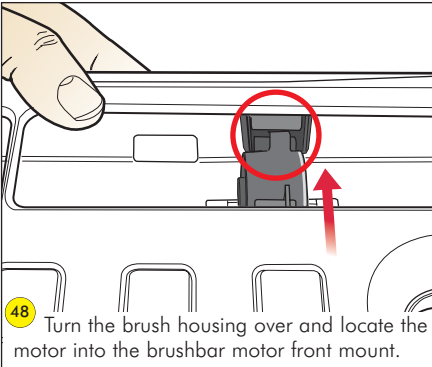


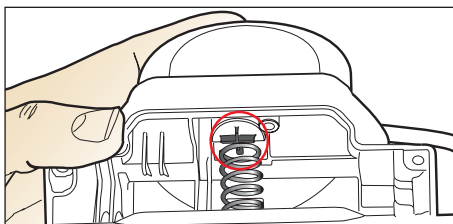
Assembling the cleanerhead



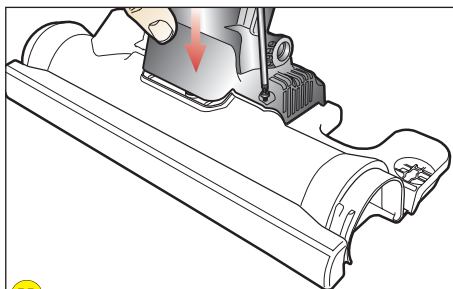


Fitting notes

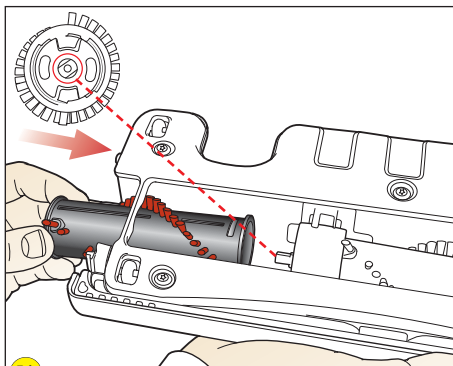




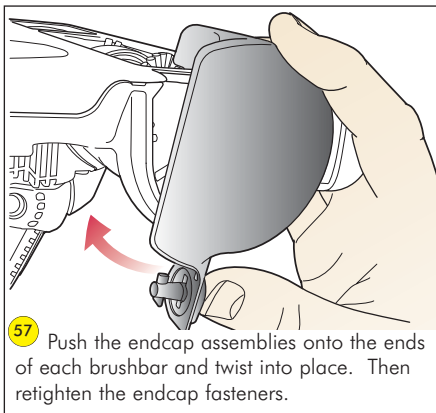
54 Align the cleanerhead spring with the cruciform on the base of the brushbar motor cover assembly.



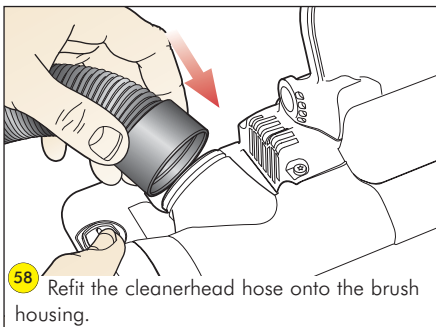
55 Lower the brushbar motor cover assembly onto the brush housing. Hold in place whilst refitting the four black screws in the top of the brush housing and the screw in the underside.



56 Align the end of each half of the brushbar assembly with the brushbar motor spindle. Push each half of the brushbar assembly onto the spindle.

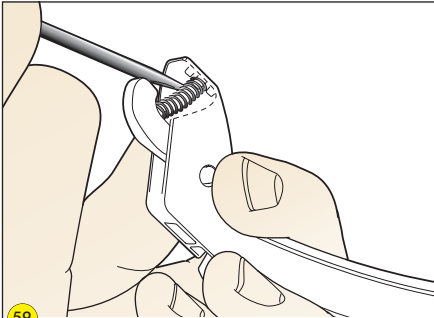


57 Push the endcap assemblies onto the ends of each brushbar and twist into place. Then retighten the endcap fasteners.

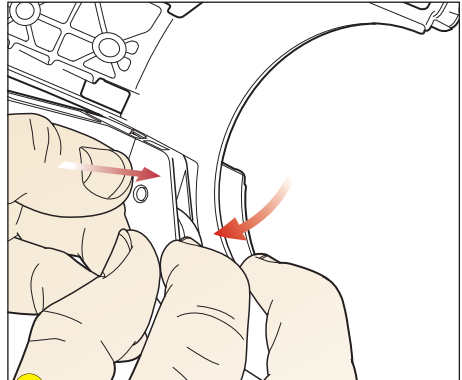


58 Refit the cleanerhead hose onto the brush housing.

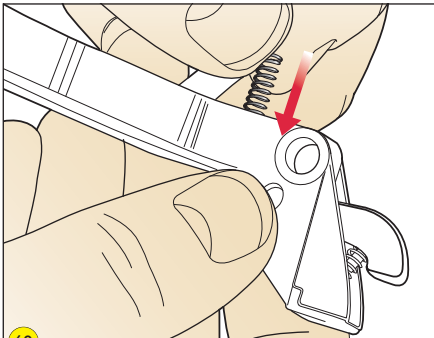
Assembling and refitting the yoke assembly



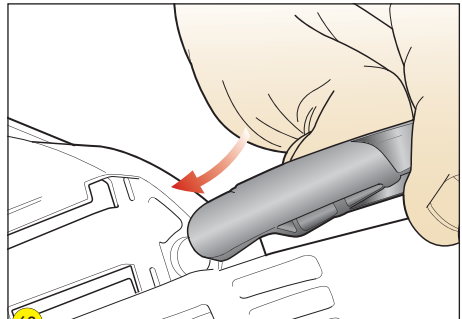
59 Place the actuator arm spring onto the actuator arm. Using a thin flat bladed screwdriver, position the other end of the spring between the two retainers inside the gimble lock arm.



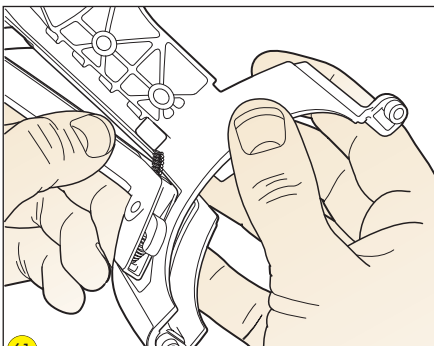
62 Carefully press the gimble lock arm spring and the actuator arm into the yoke. Press the gimble lock arm assembly onto the yoke.



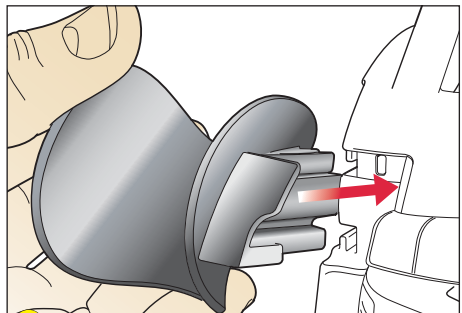
60 Lower the gimble lock arm spring into the gimble lock arm assembly.



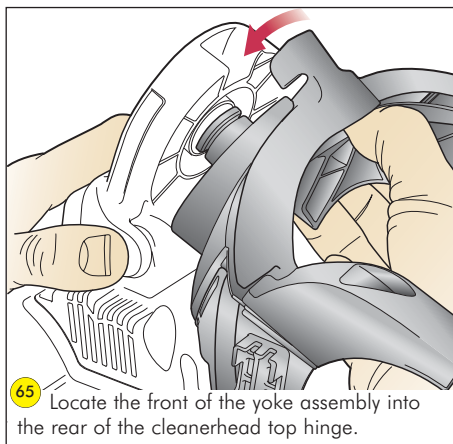
63 Clip the other end of the gimble lock arm assembly into the side of the yoke.



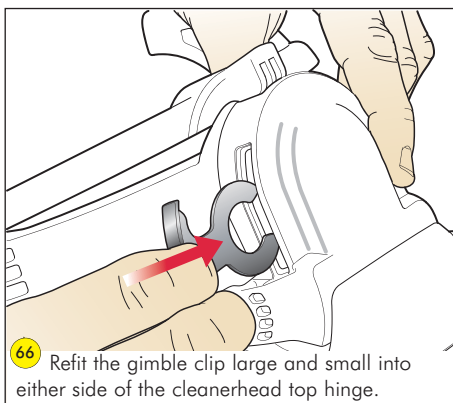
61 Position the hole on the side of the gimble lock arm assembly onto the yoke.



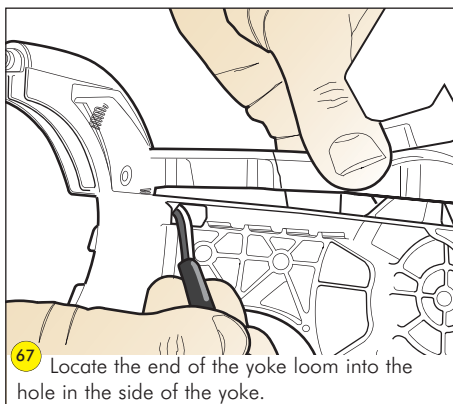
64 Slide the hose guard into the channels on the side of the yoke until the release catch clips into position.



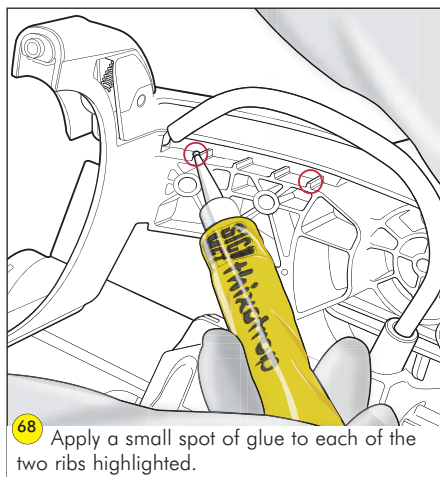
65 Locate the front of the yoke assembly into the rear of the cleanerhead top hinge.



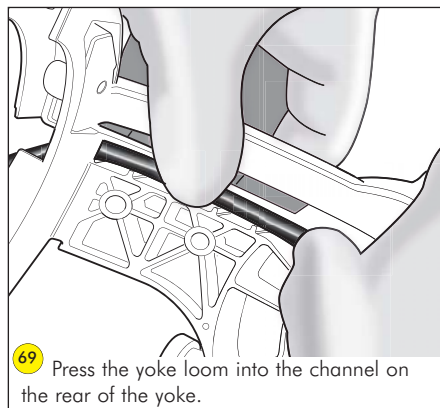
66 Refit the gimble clip large and small into either side of the cleanerhead top hinge.



67 Locate the end of the yoke loom into the hole in the side of the yoke.



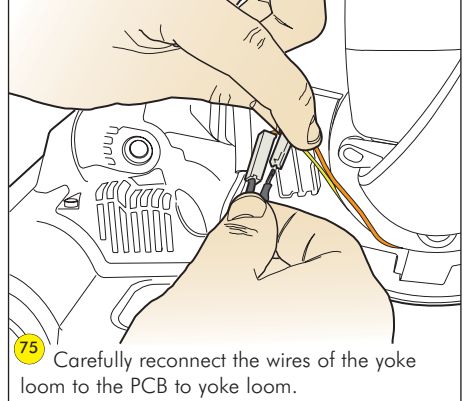
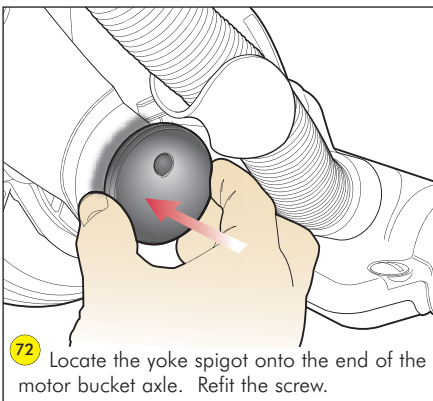
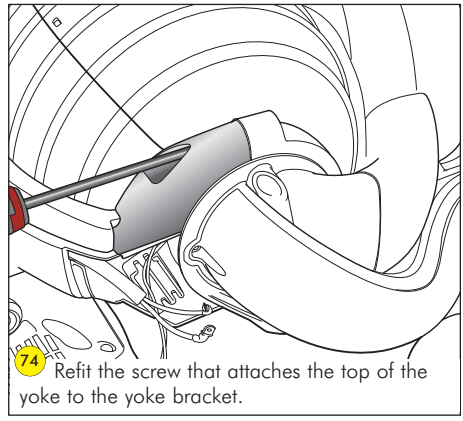
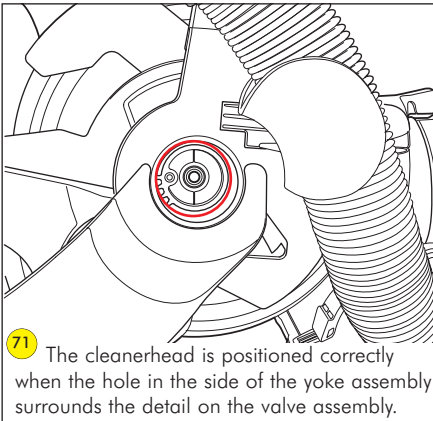
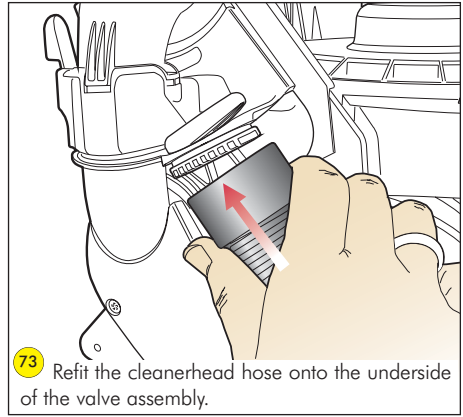
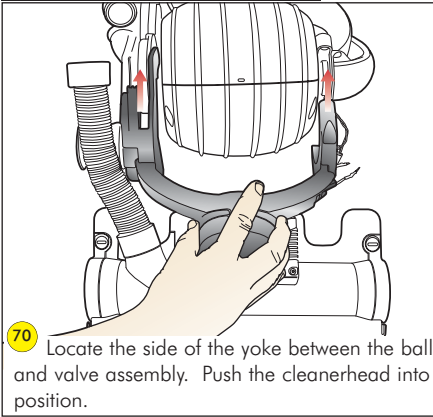
68 Apply a small spot of glue to each of the two ribs highlighted.



69 Press the yoke loom into the channel on the rear of the yoke.

Fitting notes

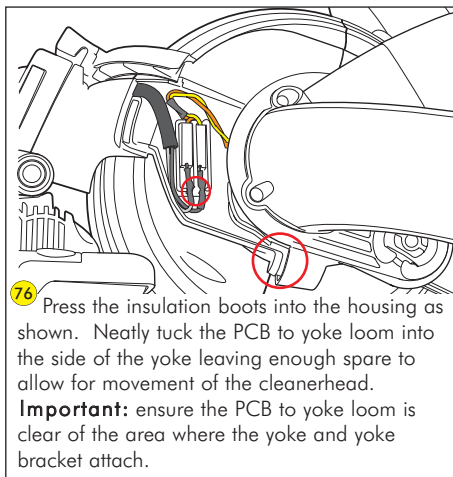
Refitting the cleanerhead



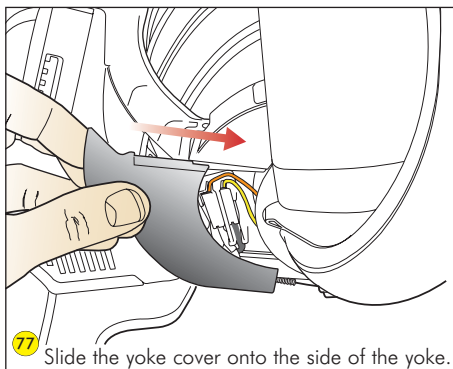
Removing the ball and motor bucket

The following parts should be removed, as previously shown, before continuing:

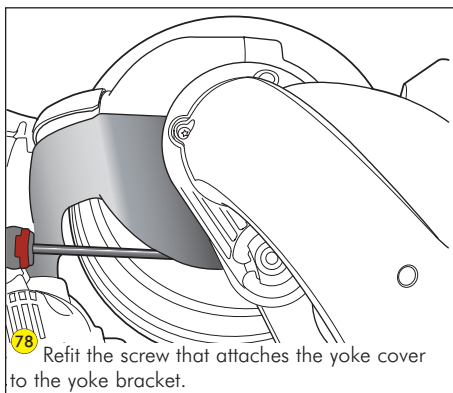
cleanerhead and yoke assembly, (pages 6-7)



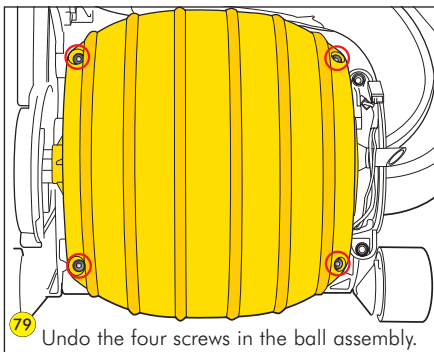
76 Press the insulation boots into the housing as shown. Neatly tuck the PCB to yoke loom into the side of the yoke leaving enough spare to allow for movement of the cleanerhead.
Important: ensure the PCB to yoke loom is clear of the area where the yoke and yoke bracket attach.



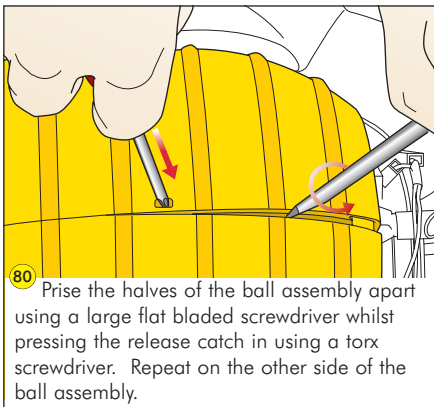
77 Slide the yoke cover onto the side of the yoke.



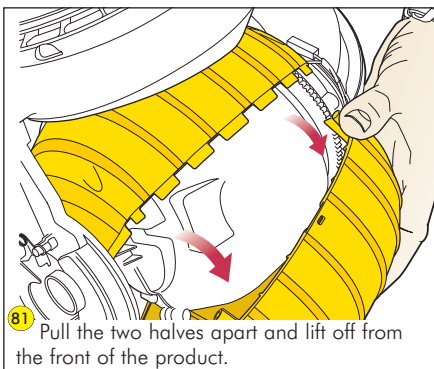
78 Refit the screw that attaches the yoke cover to the yoke bracket.



79 Undo the four screws in the ball assembly.

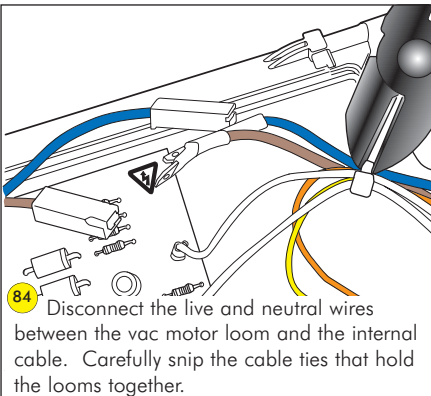
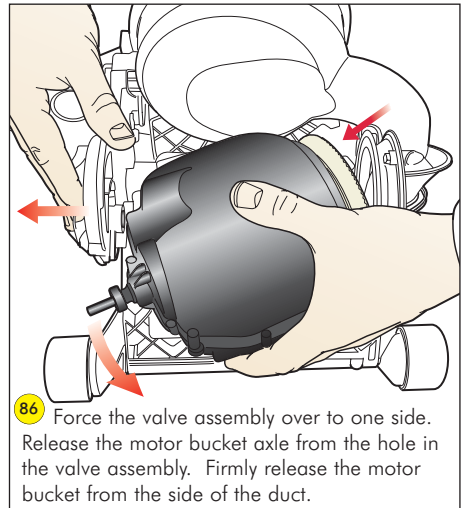
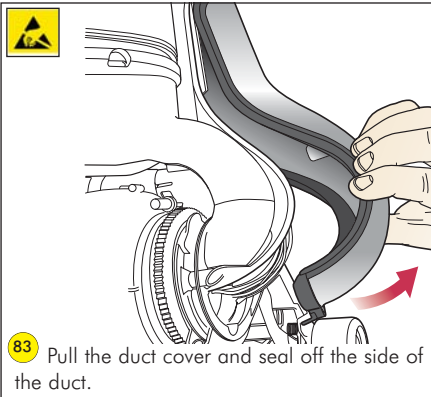
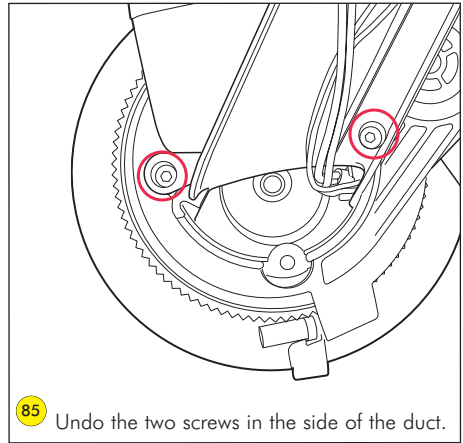
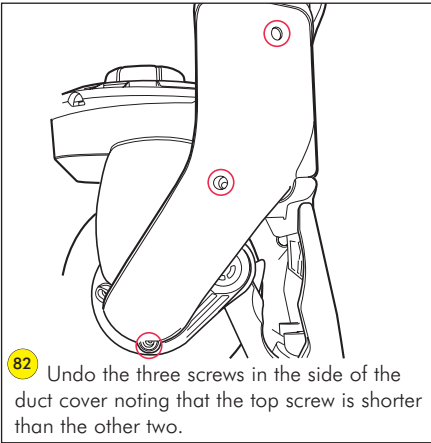


80 Prise the halves of the ball assembly apart using a large flat bladed screwdriver whilst pressing the release catch in using a torx screwdriver. Repeat on the other side of the ball assembly.

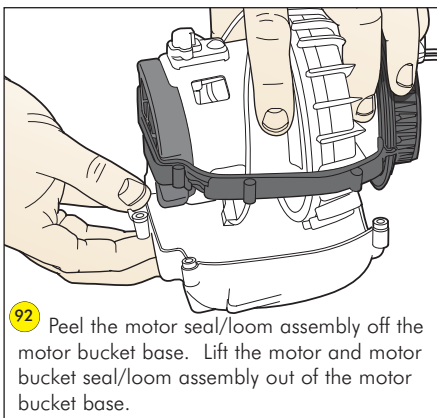
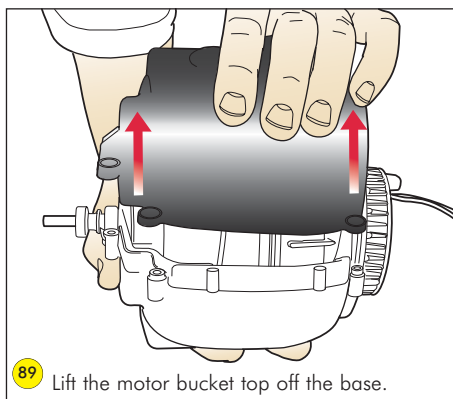
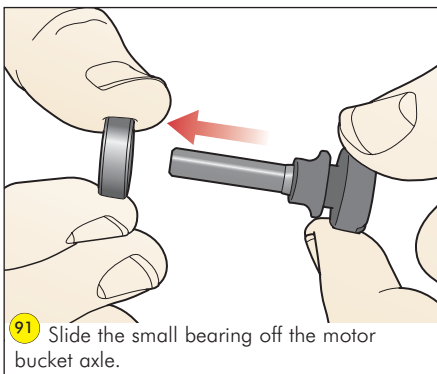
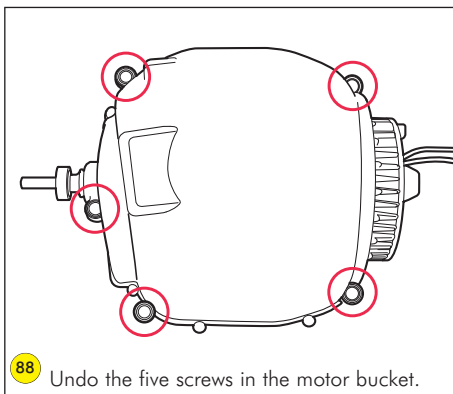
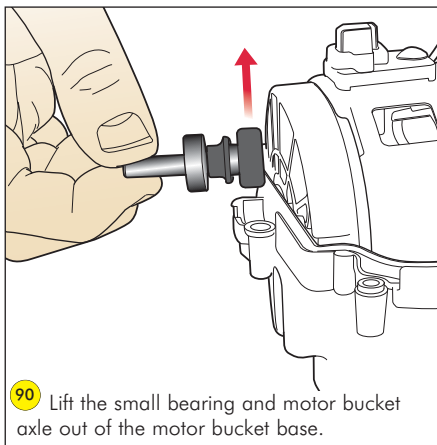
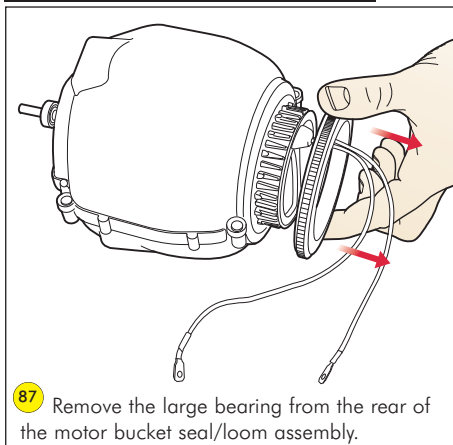


81 Pull the two halves apart and lift off from the front of the product.

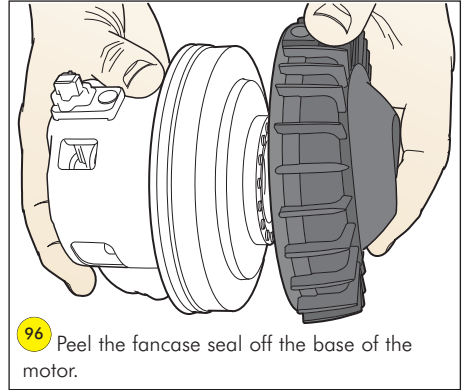
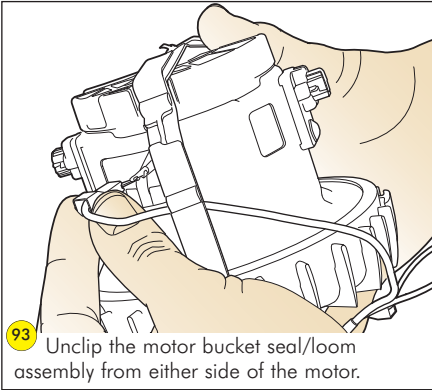
Fitting notes



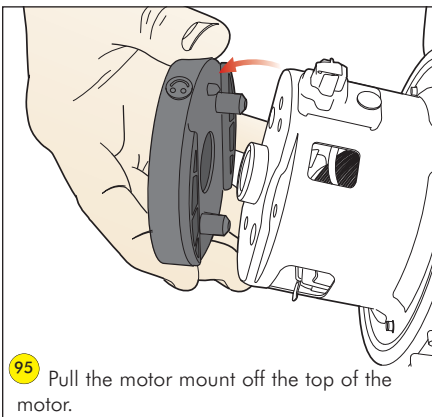
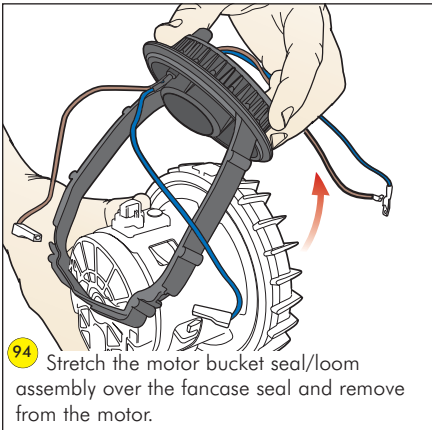
Dismantling the motor bucket



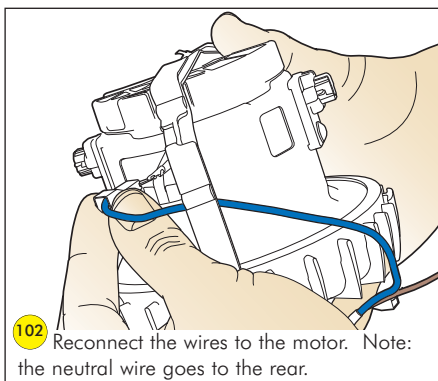
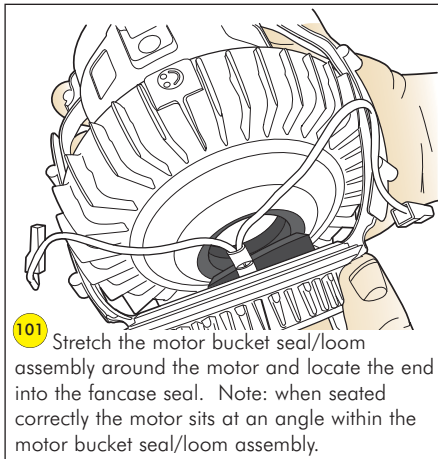
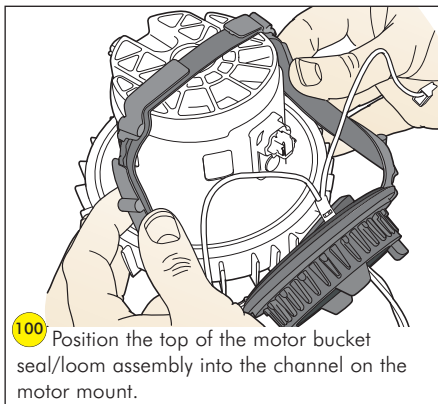
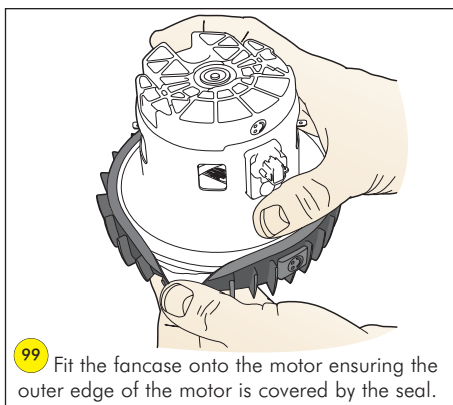
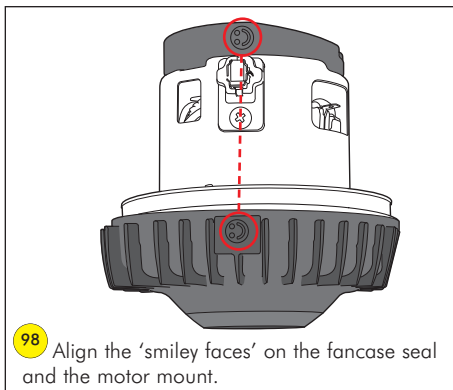
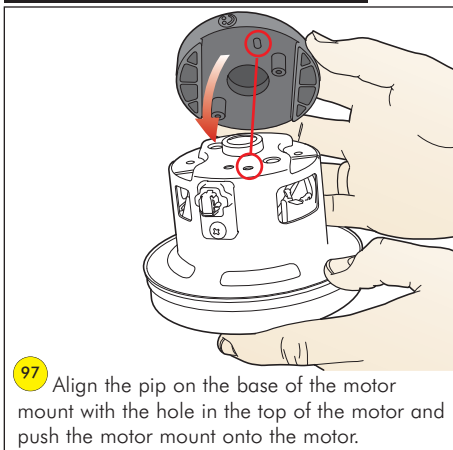
Fitting notes



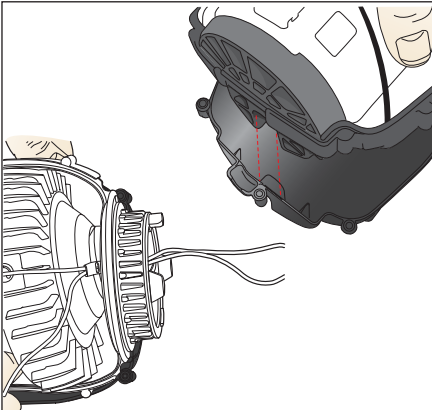
Fitting notes



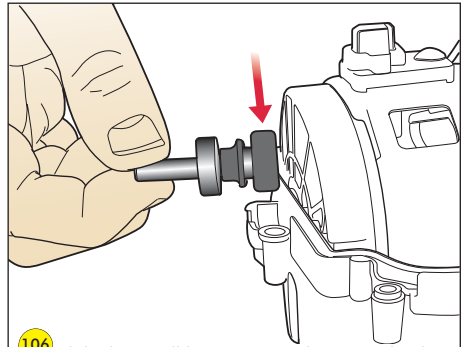
Assembling the motor bucket



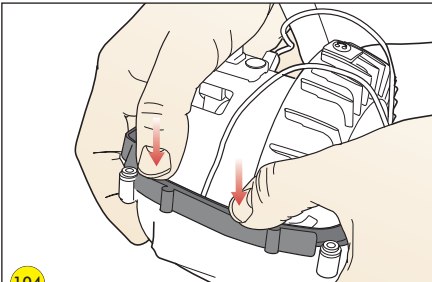
Fitting notes



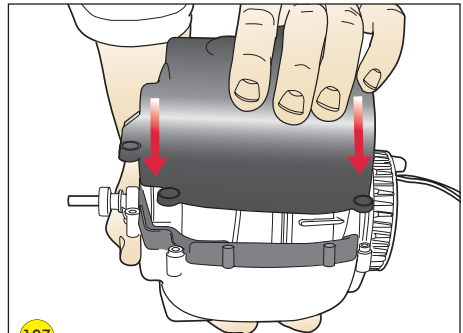
103 Lower the channel on the motor mount onto the detail inside the front of the motor bucket base. Lower the rear of the motor bucket seal into the channel in the rear of the motor bucket base.



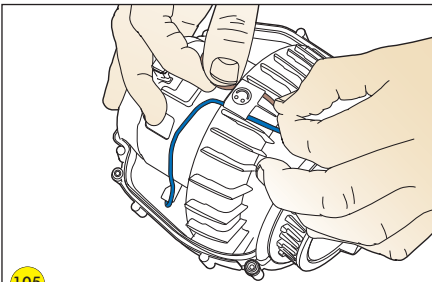
106 Slide the small bearing onto the motor bucket axle. Lower both parts into the front of the motor bucket base.



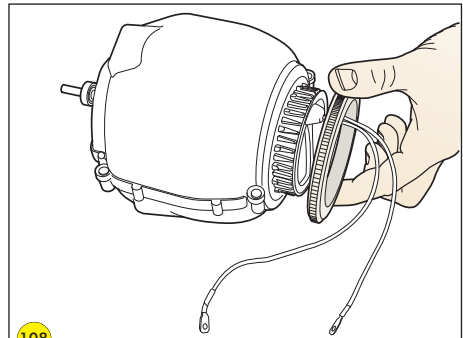
104 Fit the motor bucket seal around the edges of the motor bucket base.



107 Fit the motor bucket top onto the base. Ensure the seal covers all edges of both parts. Refit the five screws.

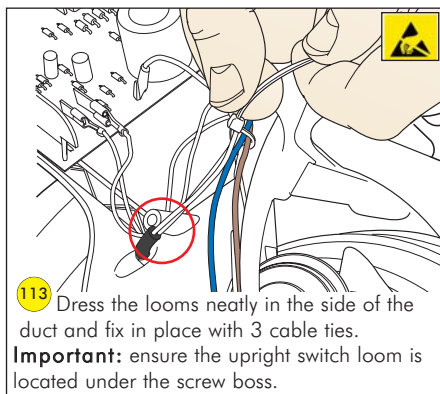
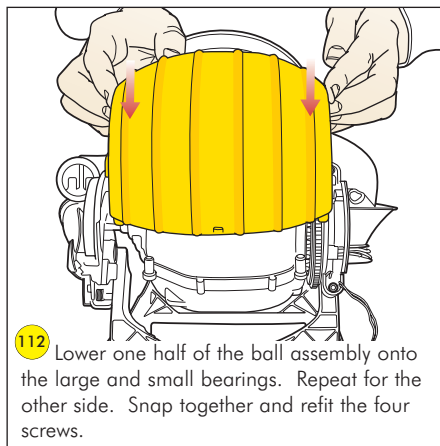
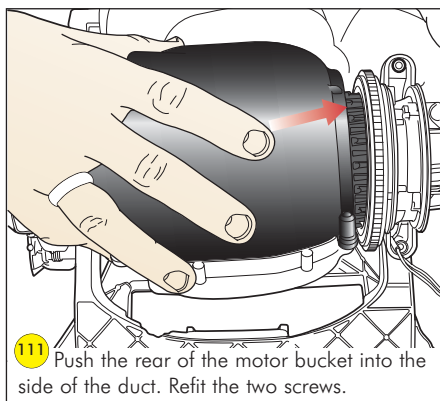
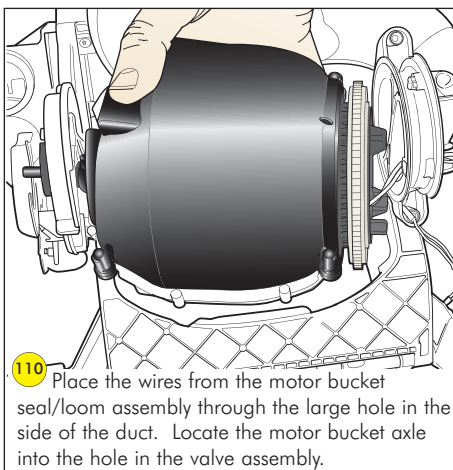
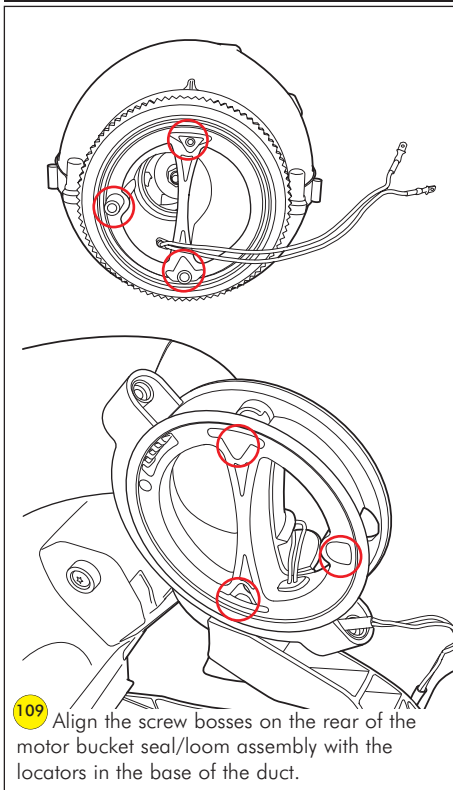


105 Tuck both wires behind the 'smiley' face on the fan case seal.

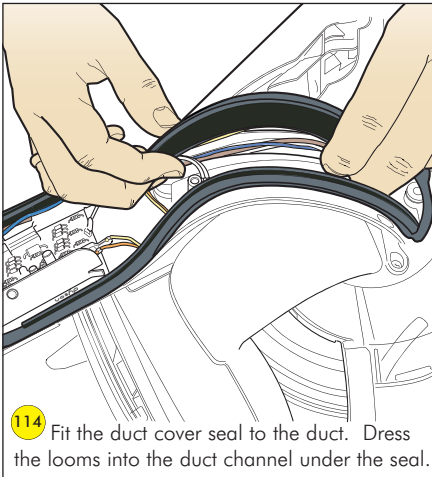


108 Slide the large bearing (teeth first) onto the rear of the motor bucket.

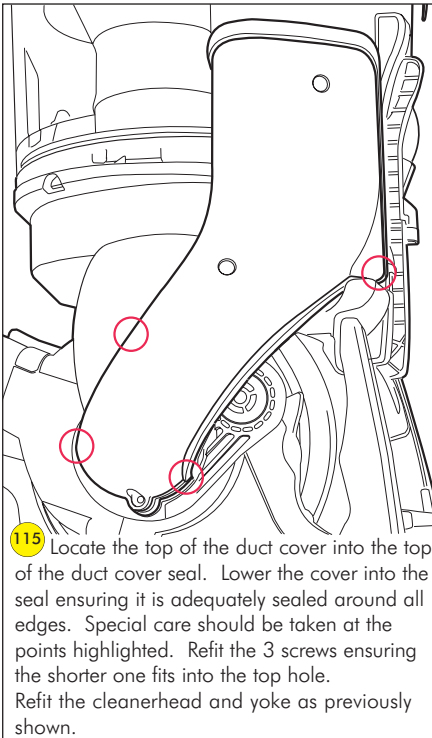
Refitting the motor bucket and ball



Fitting notes

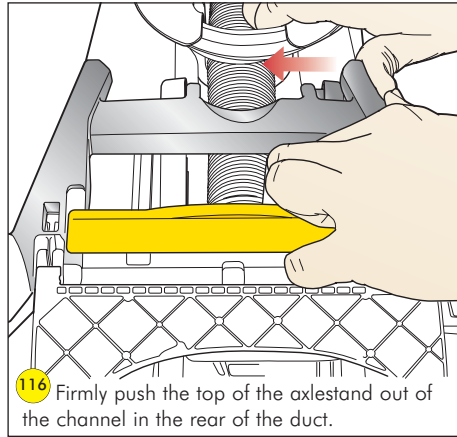


114 Fit the duct cover seal to the duct. Dress the looms into the duct channel under the seal.

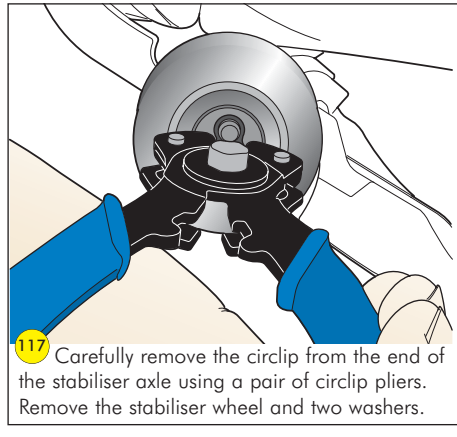


115 Locate the top of the duct cover into the top of the duct cover seal. Lower the cover into the seal ensuring it is adequately sealed around all edges. Special care should be taken at the points highlighted. Refit the 3 screws ensuring the shorter one fits into the top hole. Refit the cleanerhead and yoke as previously shown.

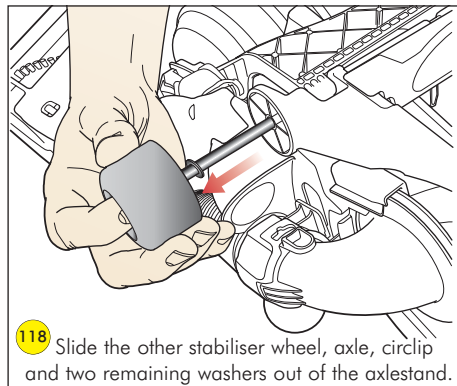
Removing and dismantling the axlestand



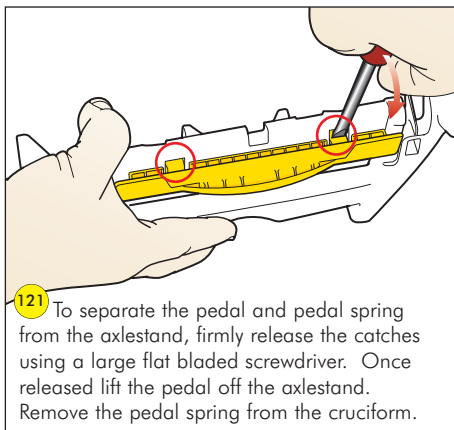
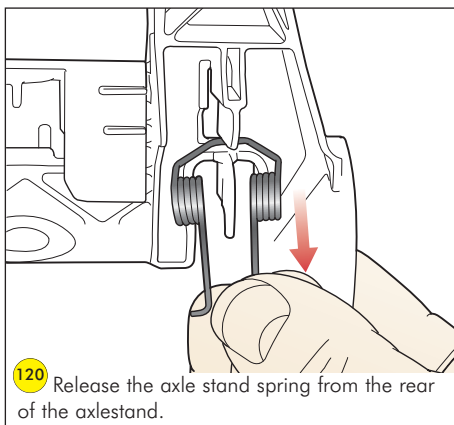
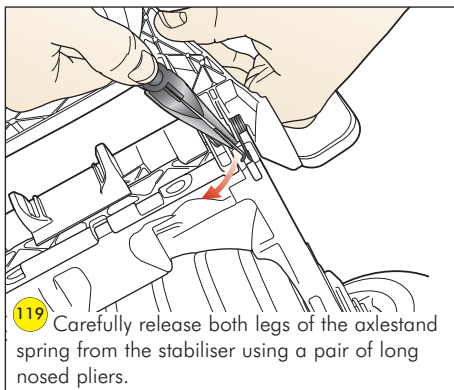
116 Firmly push the top of the axlestand out of the channel in the rear of the duct.



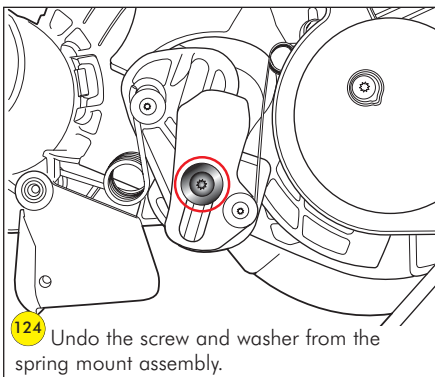
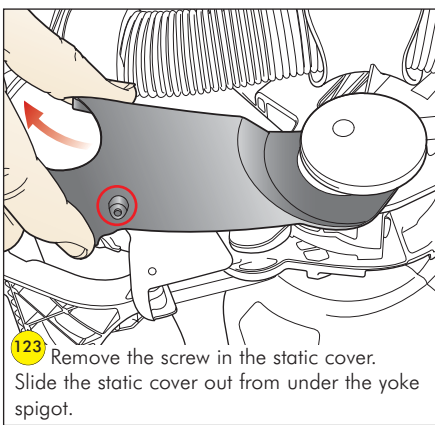
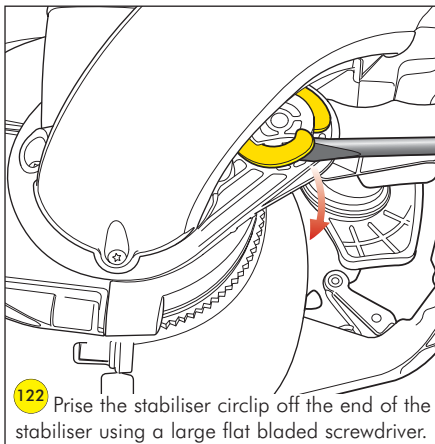
117 Carefully remove the circlip from the end of the stabiliser axle using a pair of circlip pliers. Remove the stabiliser wheel and two washers.



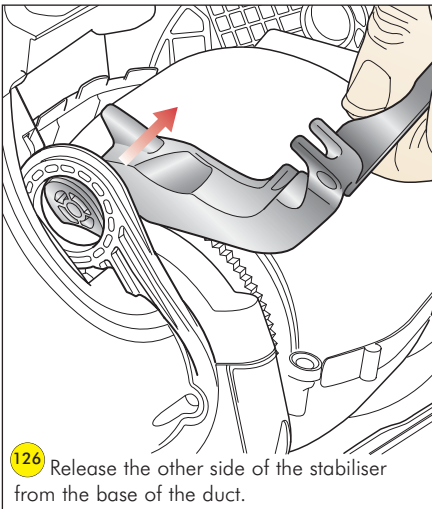
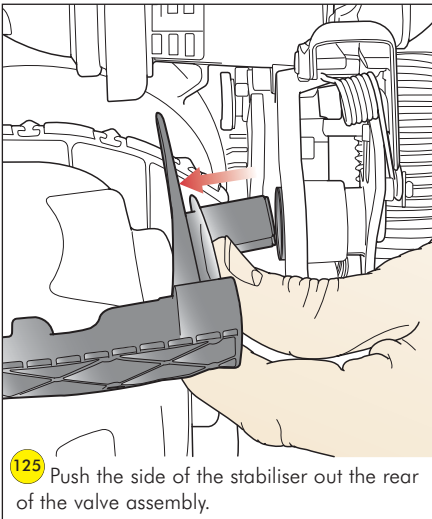
118 Slide the other stabiliser wheel, axle, circlip and two remaining washers out of the axlestand.



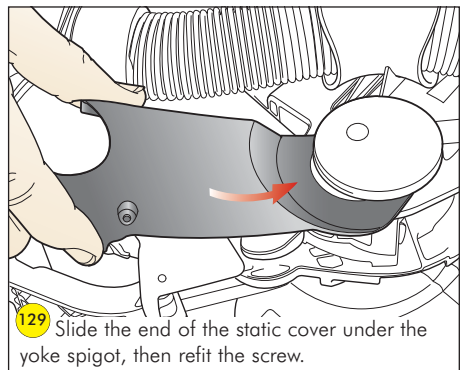
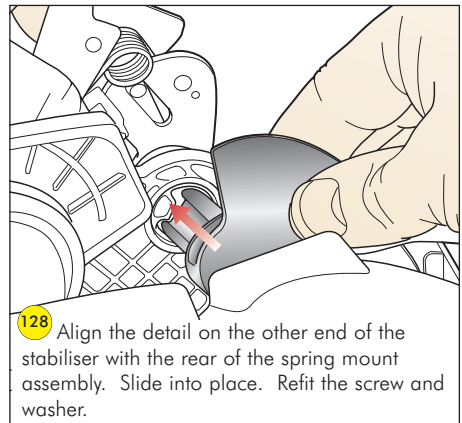
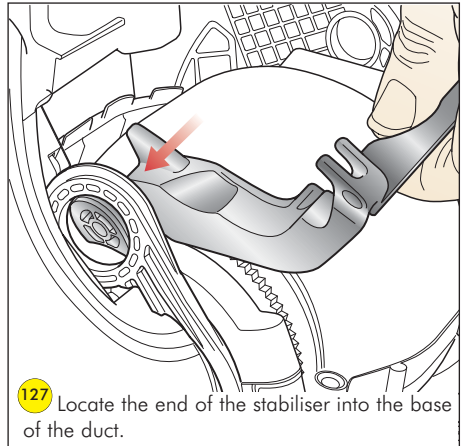
Removing the stabiliser



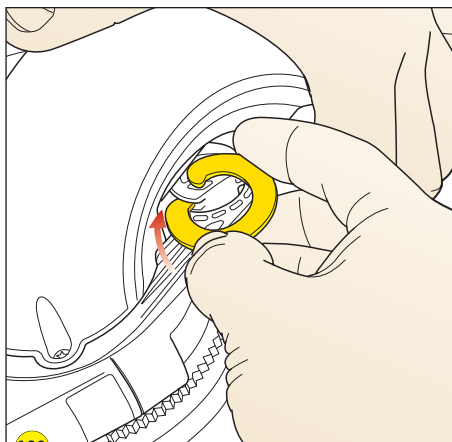
Fitting notes



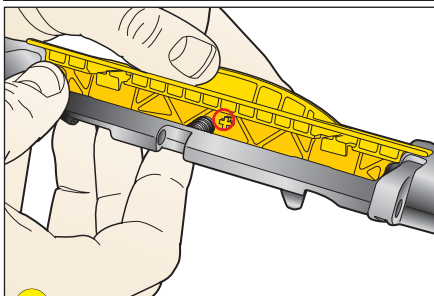
Refitting the stabiliser



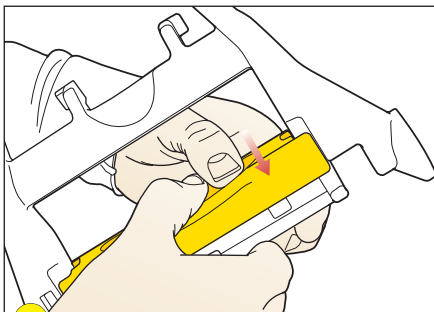
Assembling and refitting the axlestand



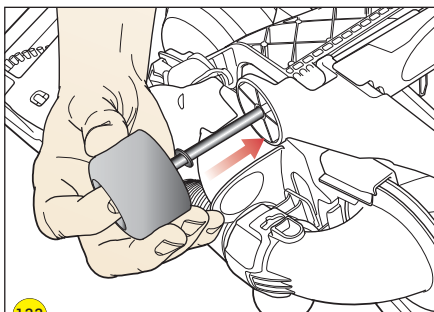
130 Locate the end of the stabiliser circlip into the channel on the end of the stabiliser. Keep it held in place in the channel whilst twisting. Continue to twist until the end of the circlip protrudes around the other side of the channel.



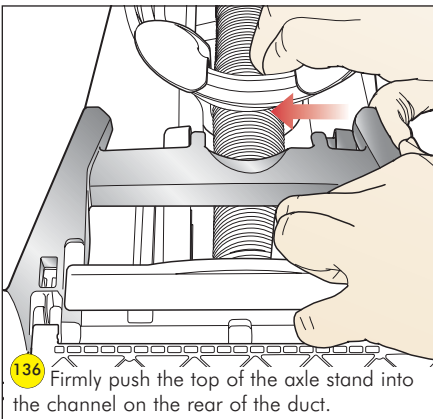
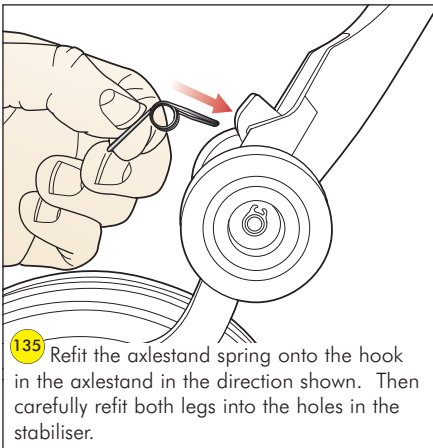
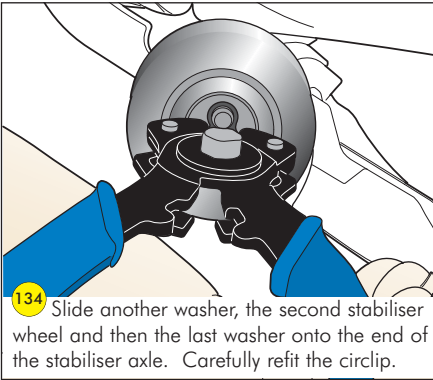
131 Fit the pedal spring onto the cruciform on the axlestand. Lower the pedal onto the axle stand ensuring the cruciform on the base of it aligns with the spring.



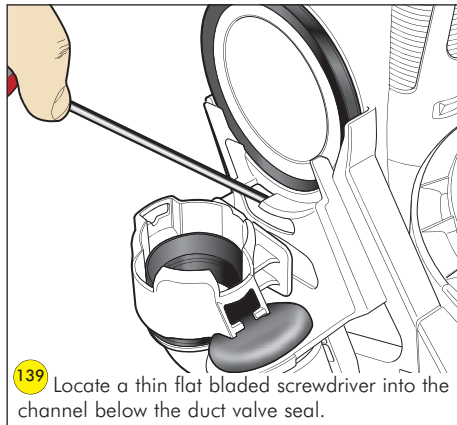
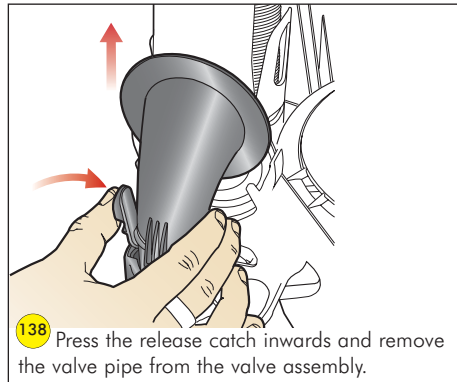
132 Press the pedal very firmly onto the axlestand until both release catches snap over the retainers.



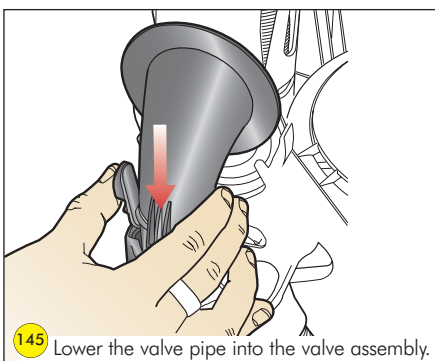
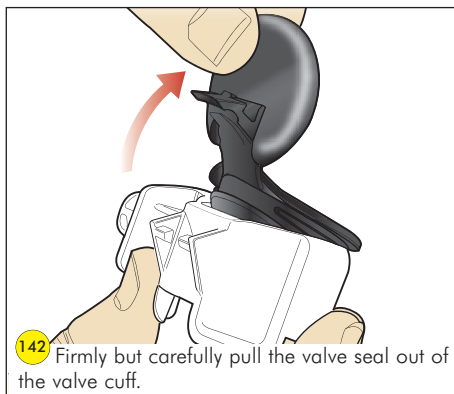
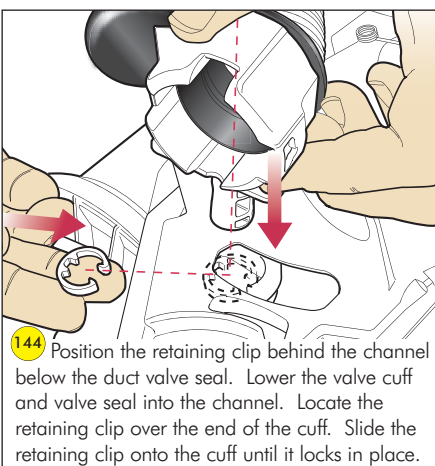
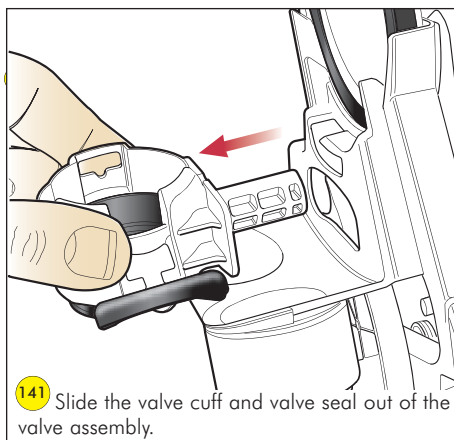
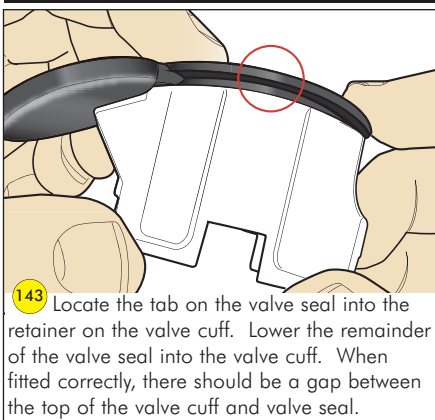
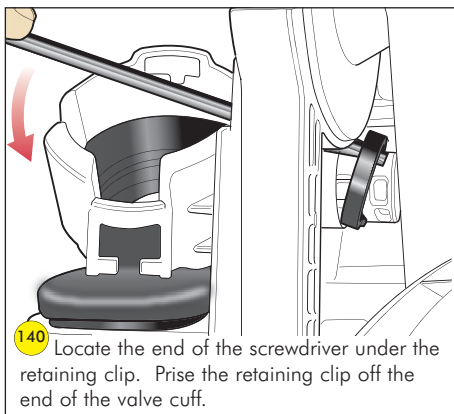
133 Align the base of the axlestand with the top of the stabiliser. Slide the stabiliser axle, a washer, a stabiliser wheel, a second washer and a circlip into the channel made by both parts.



Removing and dismantling the valve cuff and valve seal



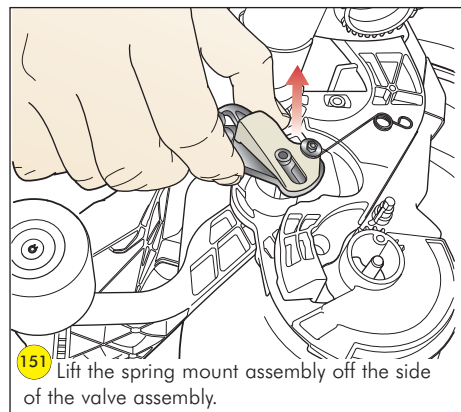
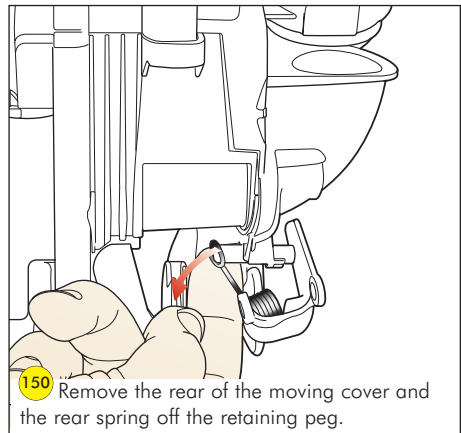
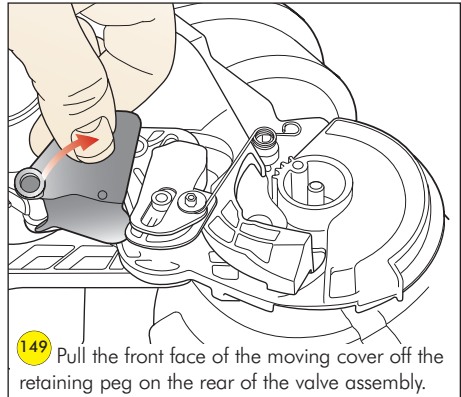
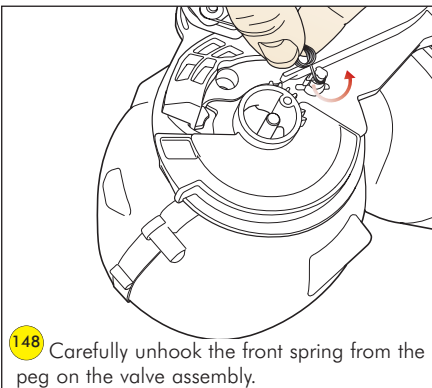
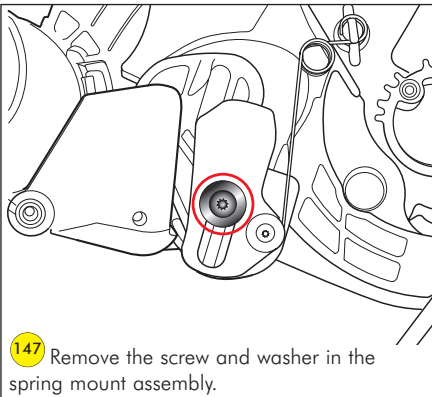
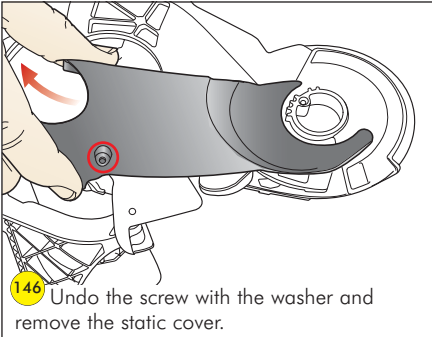
Assembling and refitting the valve cuff and valve seal



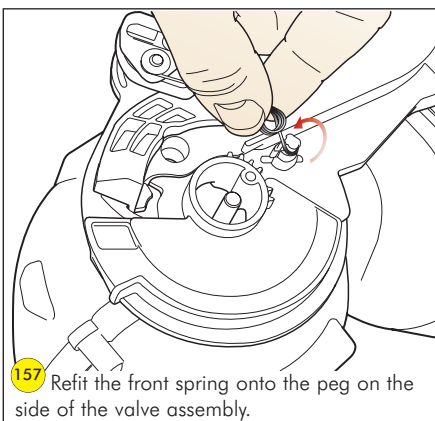
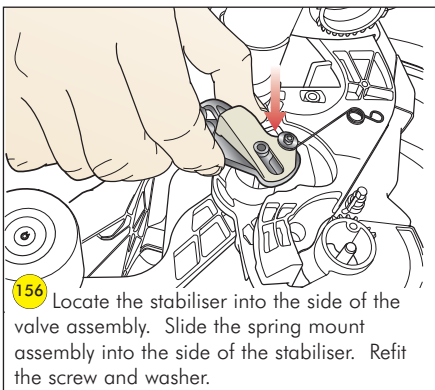
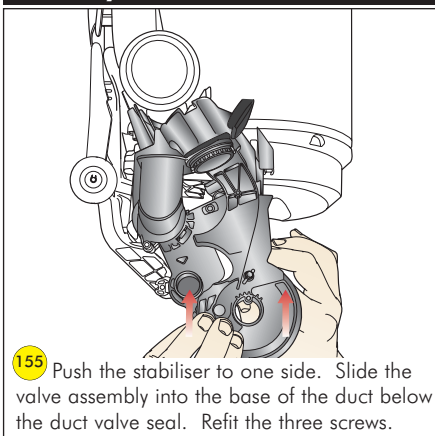
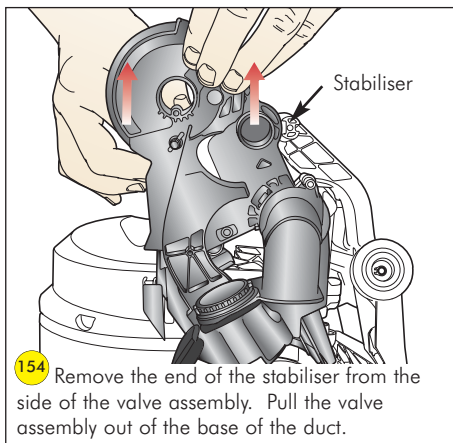
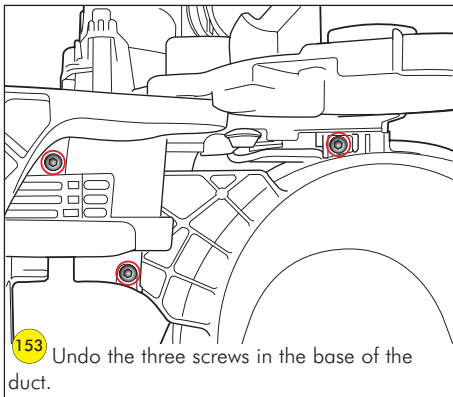
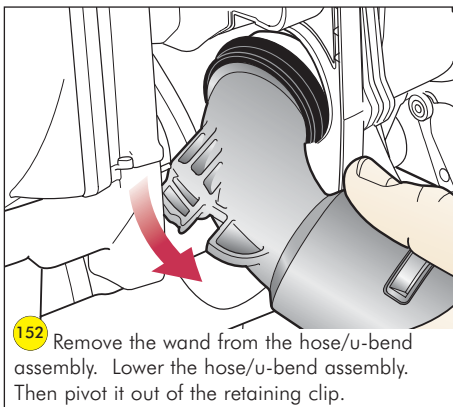
Fitting notes

Removing and dismantling the valve assembly

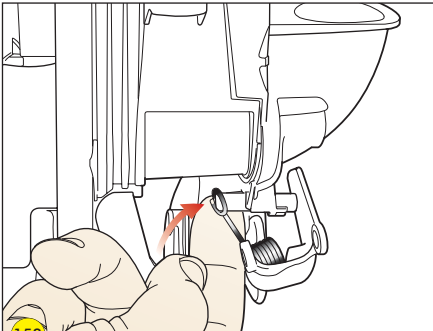
Before continuing, the following parts need to be removed as previously shown: cleanerhead and yoke, (pages 6-7) ball and motor bucket, (pages 20-21)



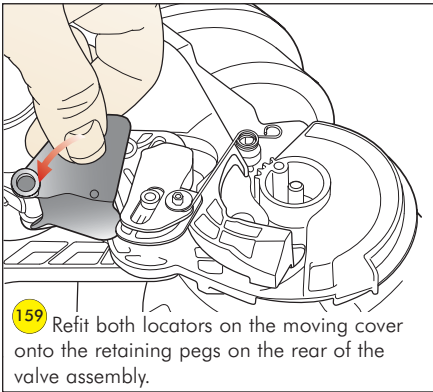
Assembling and refitting the valve assembly



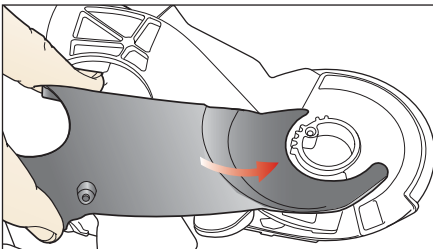
Fitting notes



158 Refit the moving cover onto the rear spring. Refit the rear spring onto the retaining peg on the rear of the valve assembly.



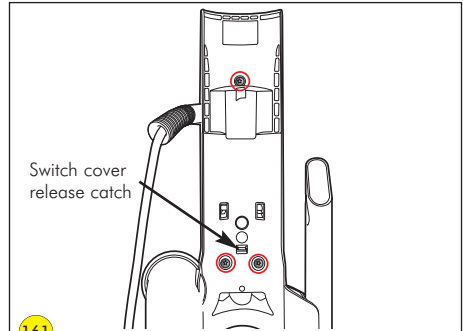
159 Refit both locators on the moving cover onto the retaining pegs on the rear of the valve assembly.



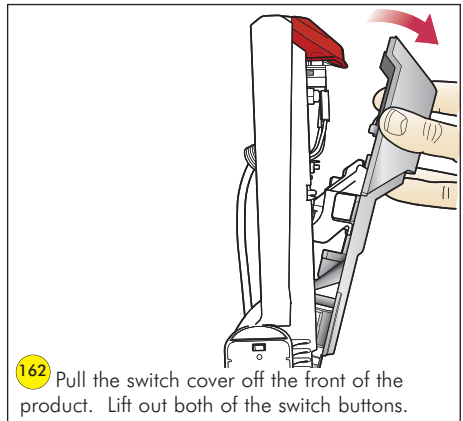
160 Refit the static cover onto the base of the valve pipe. Refit the screw.

The following parts should then be refitted as previously shown:
motor bucket and ball, (pages 26-27)
cleanerhead and yoke, (pages 19-20)

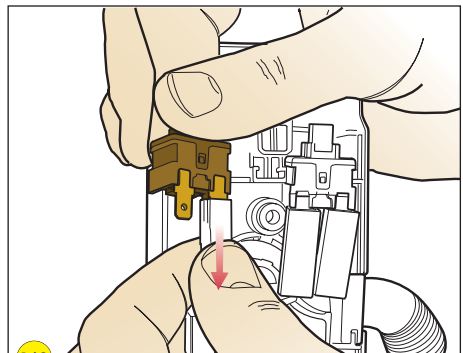
Removing the powercord assembly and switches



161 Remove the wand handle from the top of the duct. Undo the three screws in the rear of the duct. Gently push the switch cover release catch using a torx screwdriver.

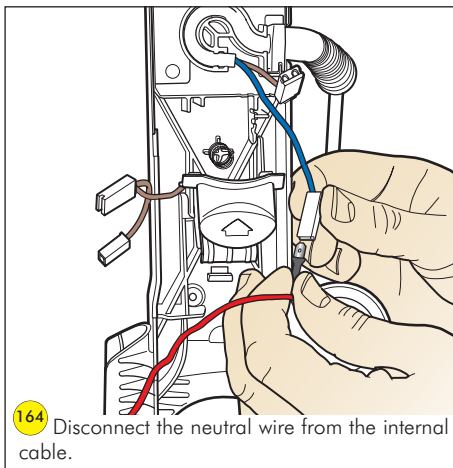


162 Pull the switch cover off the front of the product. Lift out both of the switch buttons.

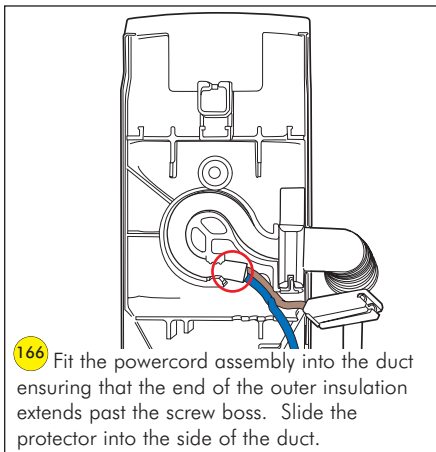


163 Carefully remove all wires from both switches.

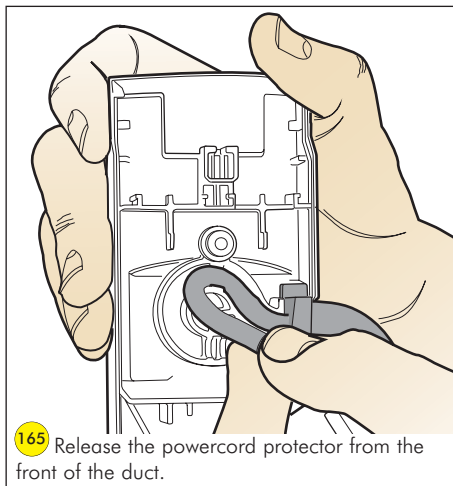
Refitting the powercord assembly and switches



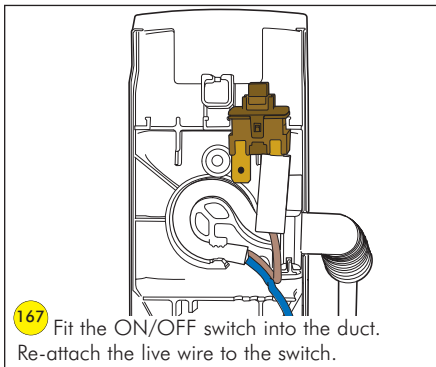
164 Disconnect the neutral wire from the internal cable.



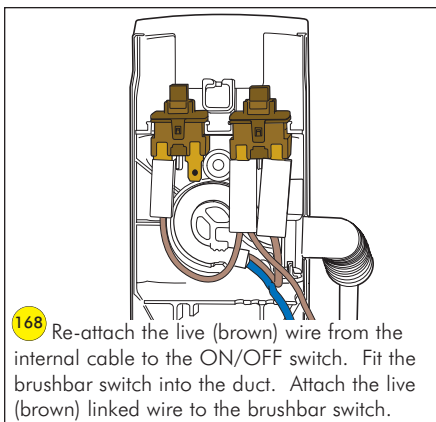
166 Fit the powercord assembly into the duct ensuring that the end of the outer insulation extends past the screw boss. Slide the protector into the side of the duct.



165 Release the powercord protector from the front of the duct.



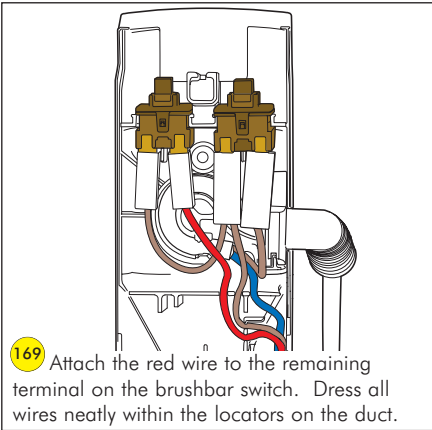
167 Fit the ON/OFF switch into the duct. Re-attach the live wire to the switch.



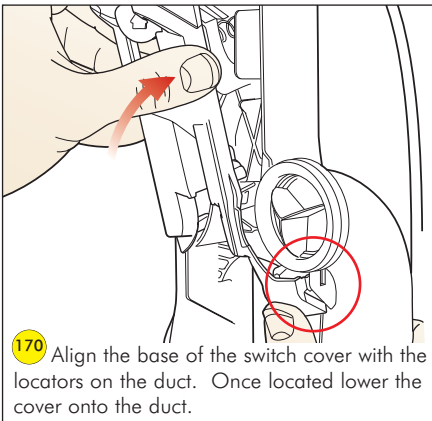
168 Re-attach the live (brown) wire from the internal cable to the ON/OFF switch. Fit the brushbar switch into the duct. Attach the live (brown) linked wire to the brushbar switch.

Fitting notes

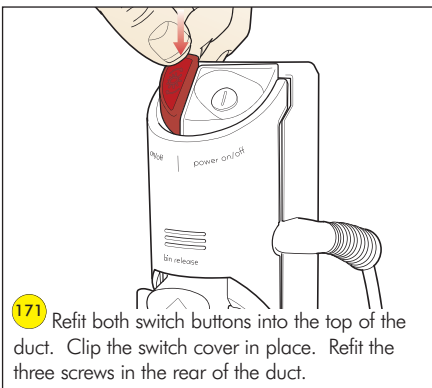
Removing and refitting the internal cable



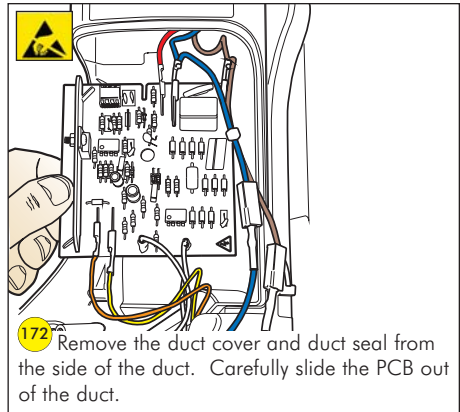
169 Attach the red wire to the remaining terminal on the brushbar switch. Dress all wires neatly within the locators on the duct.



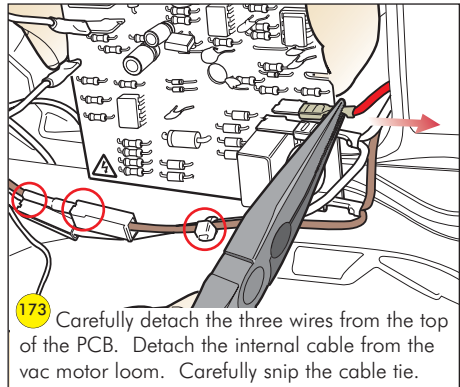
170 Align the base of the switch cover with the locators on the duct. Once located lower the cover onto the duct.



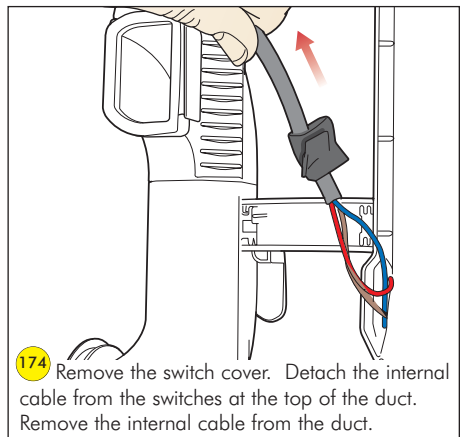
171 Refit both switch buttons into the top of the duct. Clip the switch cover in place. Refit the three screws in the rear of the duct.



172 Remove the duct cover and duct seal from the side of the duct. Carefully slide the PCB out of the duct.



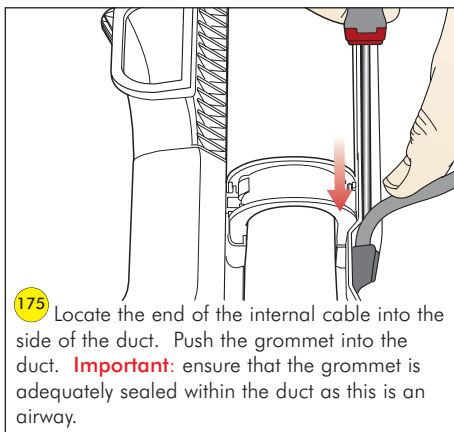
173 Carefully detach the three wires from the top of the PCB. Detach the internal cable from the vac motor loom. Carefully snip the cable tie.



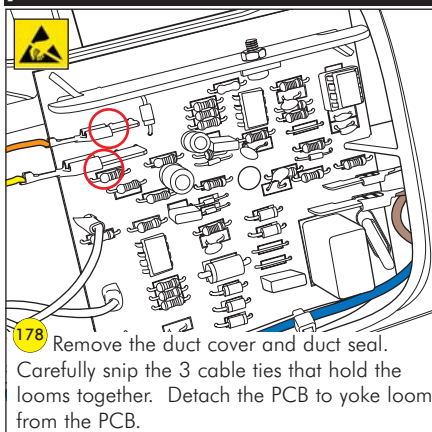
174 Remove the switch cover. Detach the internal cable from the switches at the top of the duct. Remove the internal cable from the duct.

Fitting notes

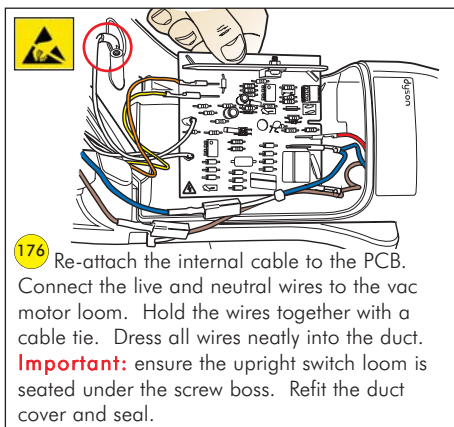
Removing and refitting the PCB to yoke loom



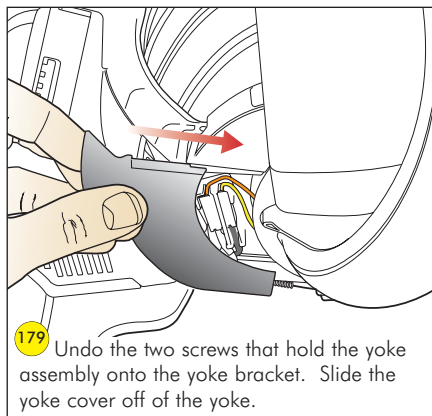
175 Locate the end of the internal cable into the side of the duct. Push the grommet into the duct. **Important:** ensure that the grommet is adequately sealed within the duct as this is an airway.



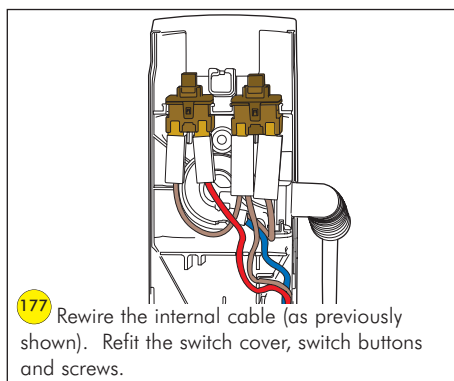
178 Remove the duct cover and duct seal. Carefully snip the 3 cable ties that hold the looms together. Detach the PCB to yoke loom from the PCB.



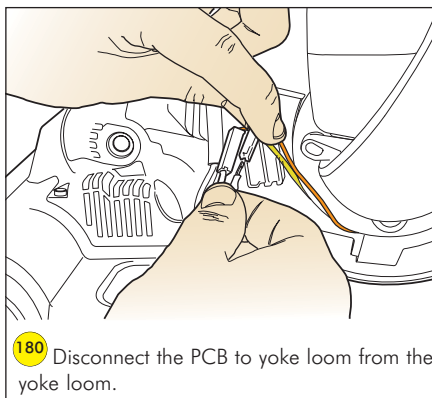
176 Re-attach the internal cable to the PCB. Connect the live and neutral wires to the vac motor loom. Hold the wires together with a cable tie. Dress all wires neatly into the duct. **Important:** ensure the upright switch loom is seated under the screw boss. Refit the duct cover and seal.



179 Undo the two screws that hold the yoke assembly onto the yoke bracket. Slide the yoke cover off of the yoke.

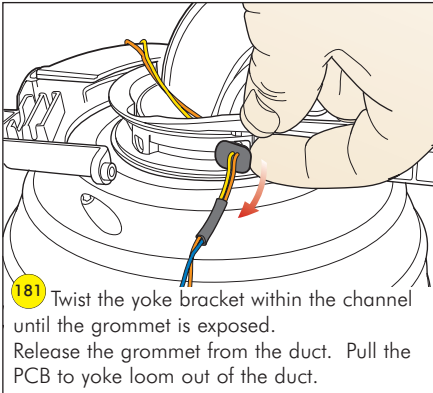


177 Rewire the internal cable (as previously shown). Refit the switch cover, switch buttons and screws.

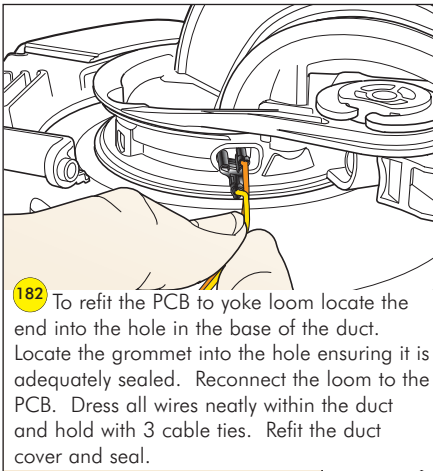


180 Disconnect the PCB to yoke loom from the yoke loom.

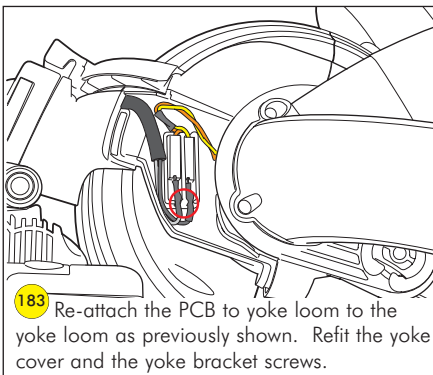
Fitting notes



181 Twist the yoke bracket within the channel until the grommet is exposed. Release the grommet from the duct. Pull the PCB to yoke loom out of the duct.

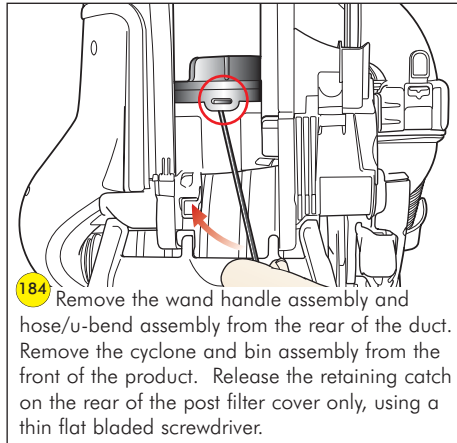


182 To refit the PCB to yoke loom locate the end into the hole in the base of the duct. Locate the grommet into the hole ensuring it is adequately sealed. Reconnect the loom to the PCB. Dress all wires neatly within the duct and hold with 3 cable ties. Refit the duct cover and seal.

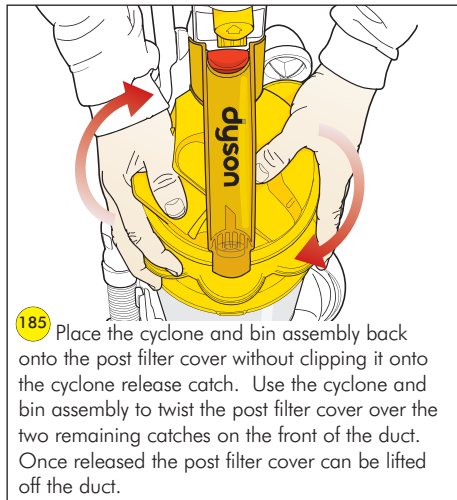


183 Re-attach the PCB to yoke loom to the yoke loom as previously shown. Refit the yoke cover and the yoke bracket screws.

Dismantling the duct assembly



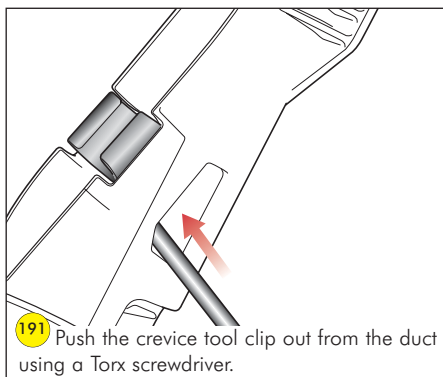
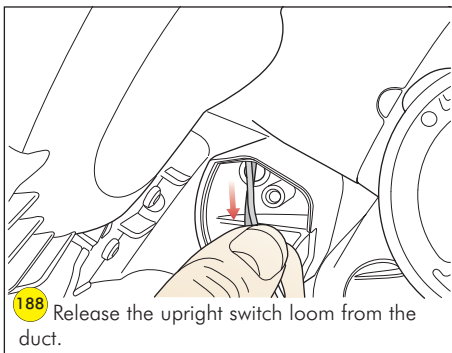
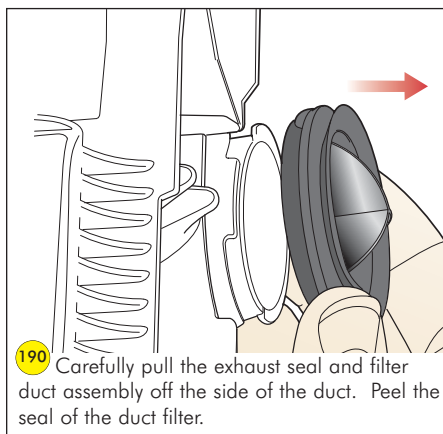
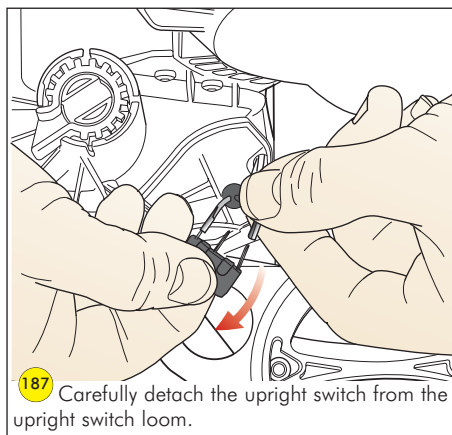
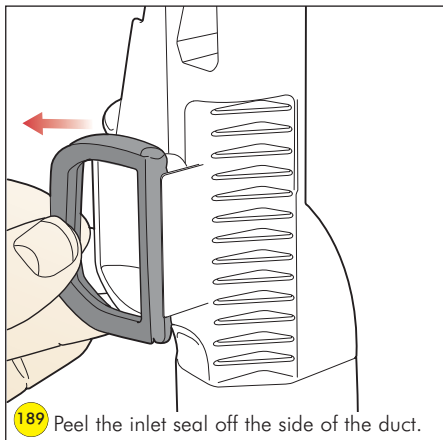
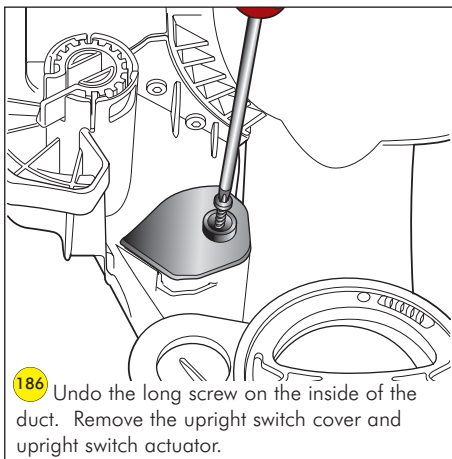
184 Remove the wand handle assembly and hose/u-bend assembly from the rear of the duct. Remove the cyclone and bin assembly from the front of the product. Release the retaining catch on the rear of the post filter cover only, using a thin flat bladed screwdriver.



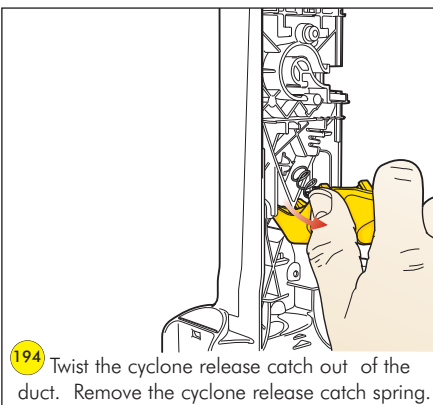
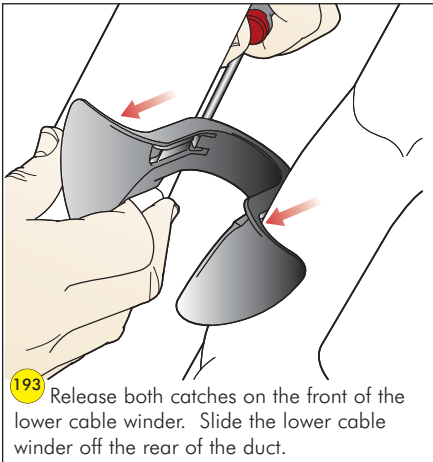
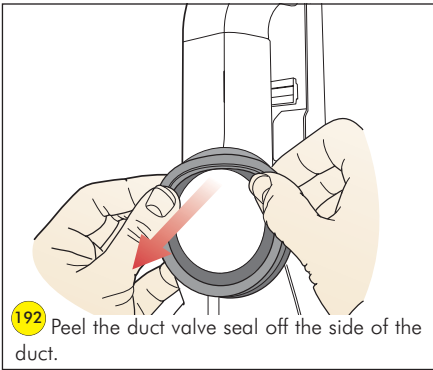
185 Place the cyclone and bin assembly back onto the post filter cover without clipping it onto the cyclone release catch. Use the cyclone and bin assembly to twist the post filter cover over the two remaining catches on the front of the duct. Once released the post filter cover can be lifted off the duct.

Once you have removed the post filter cover assembly you should continue to remove the following parts from the duct, as previously shown, before continuing:

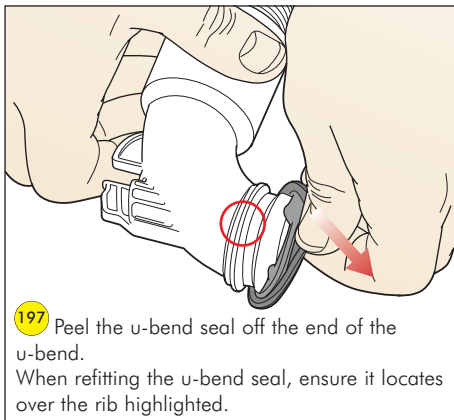
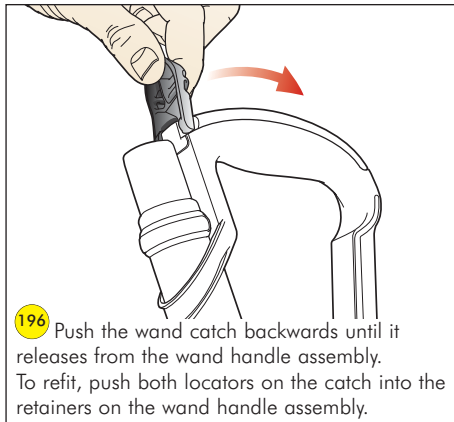
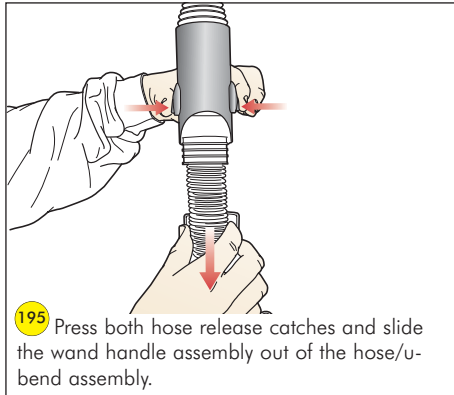
- cleanerhead and yoke (pages 6-7)
- motor bucket and ball (pages 20-21)
- axlestand and stabiliser (pages 27-29)
- valve assembly (pages 33-34)
- powercord assembly and switches (pages 35-36)
- internal cable (pages 37-38)
- PCB to yoke loom and PCB assembly (pages 38-39)



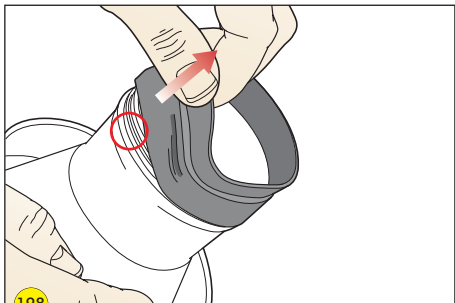
Fitting notes



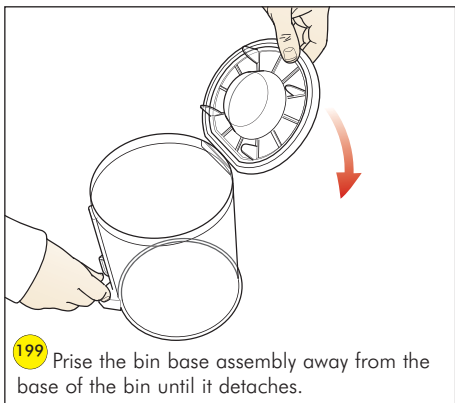
Hose/u-bend and wand assemblies



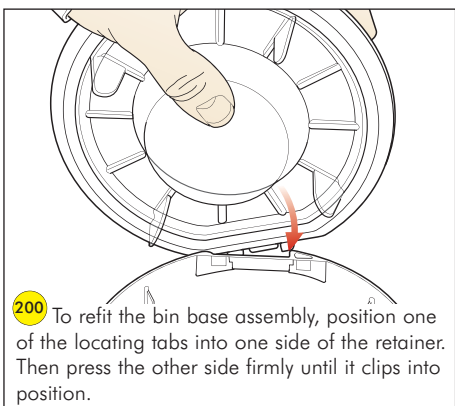
Cyclone and bin assemblies



198 Firmly pull the FDC seal off the base of the cyclone assembly. When refitting the FDC seal ensure the top of the seal covers all the ribs on the base of the cyclone assembly.

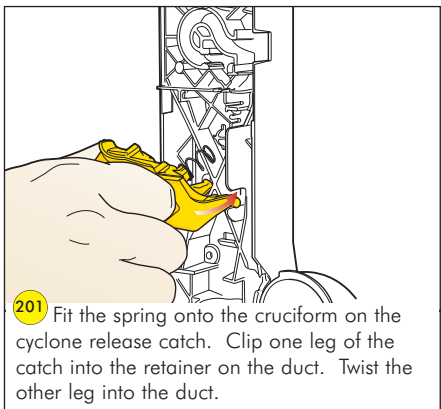


199 Prise the bin base assembly away from the base of the bin until it detaches.

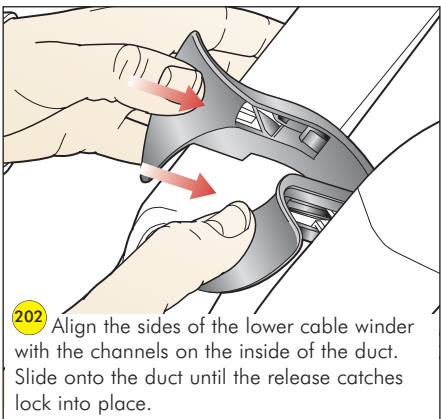


200 To refit the bin base assembly, position one of the locating tabs into one side of the retainer. Then press the other side firmly until it clips into position.

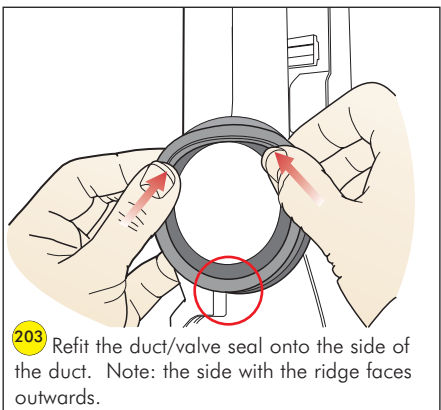
Assembling the duct assembly



201 Fit the spring onto the cruciform on the cyclone release catch. Clip one leg of the catch into the retainer on the duct. Twist the other leg into the duct.

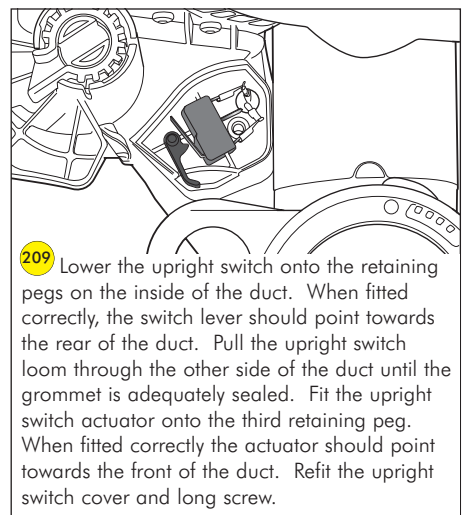
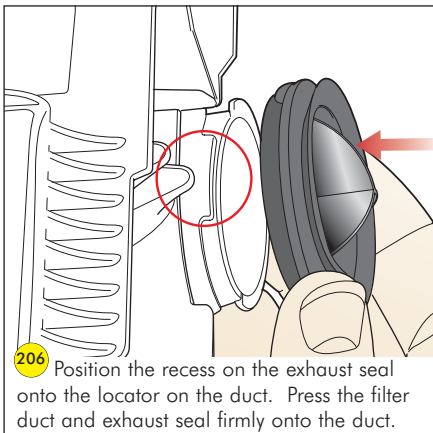
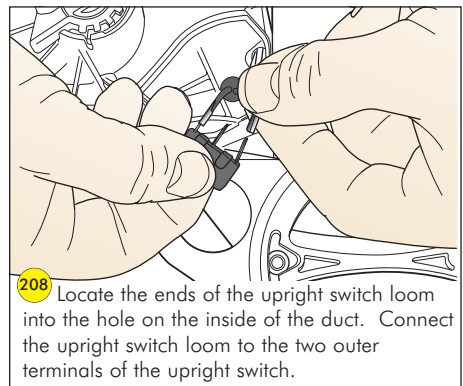
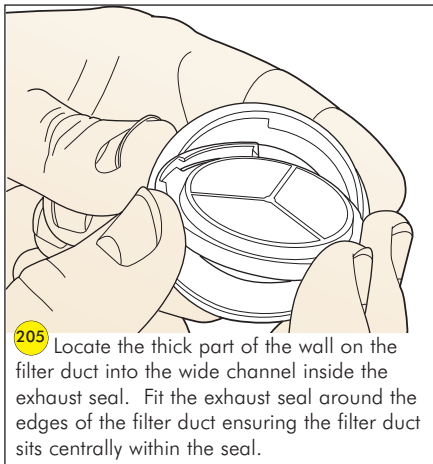
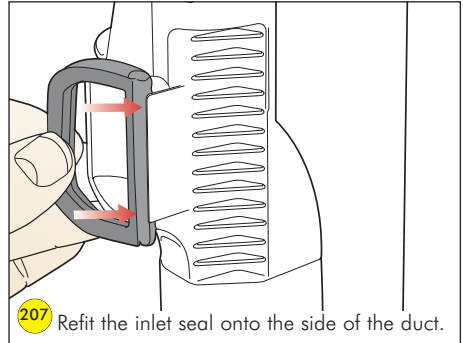
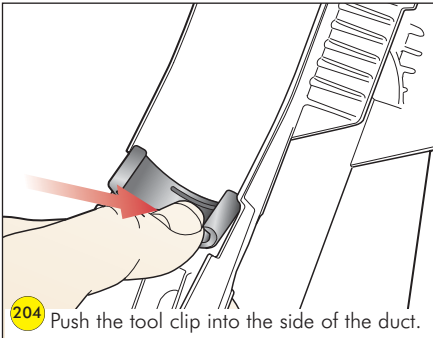


202 Align the sides of the lower cable winder with the channels on the inside of the duct. Slide onto the duct until the release catches lock into place.



203 Refit the duct/valve seal onto the side of the duct. Note: the side with the ridge faces outwards.

Fitting notes



Once you have fitted all the previous parts to the duct, you should continue to fit the following main assemblies in order as previously shown:

valve assembly, (pages 34-35)

stabiliser and axlestand, (pages 29-31)

motor bucket and ball, (pages. 26-27)

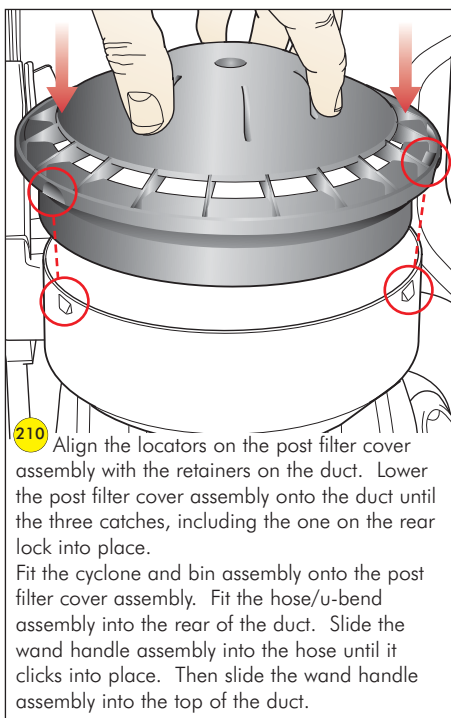
Once the previous main assemblies are fitted, you should continue to fit the following parts:

internal cable and PCB assembly, (page 38)

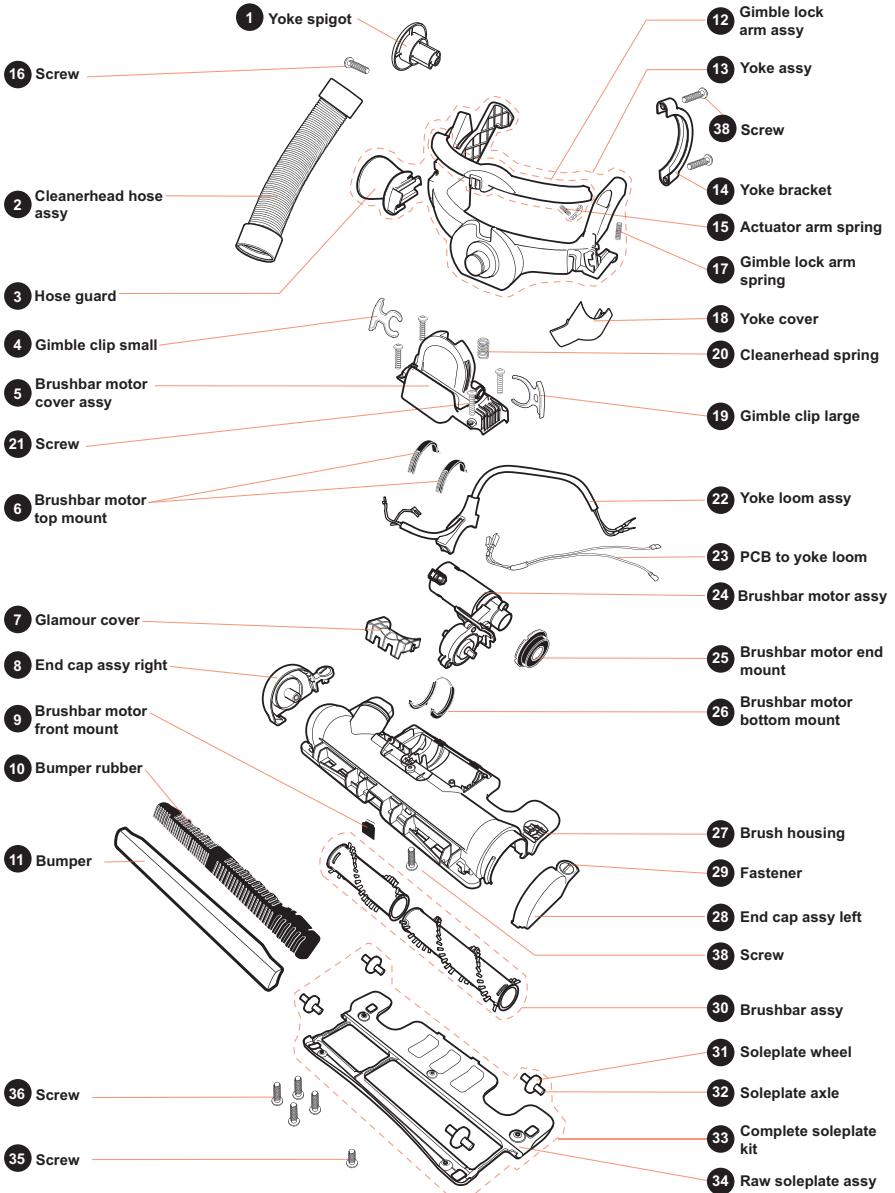
PCB to yoke loom, (page 39)

powercord assembly and switches, (pages 36-37)

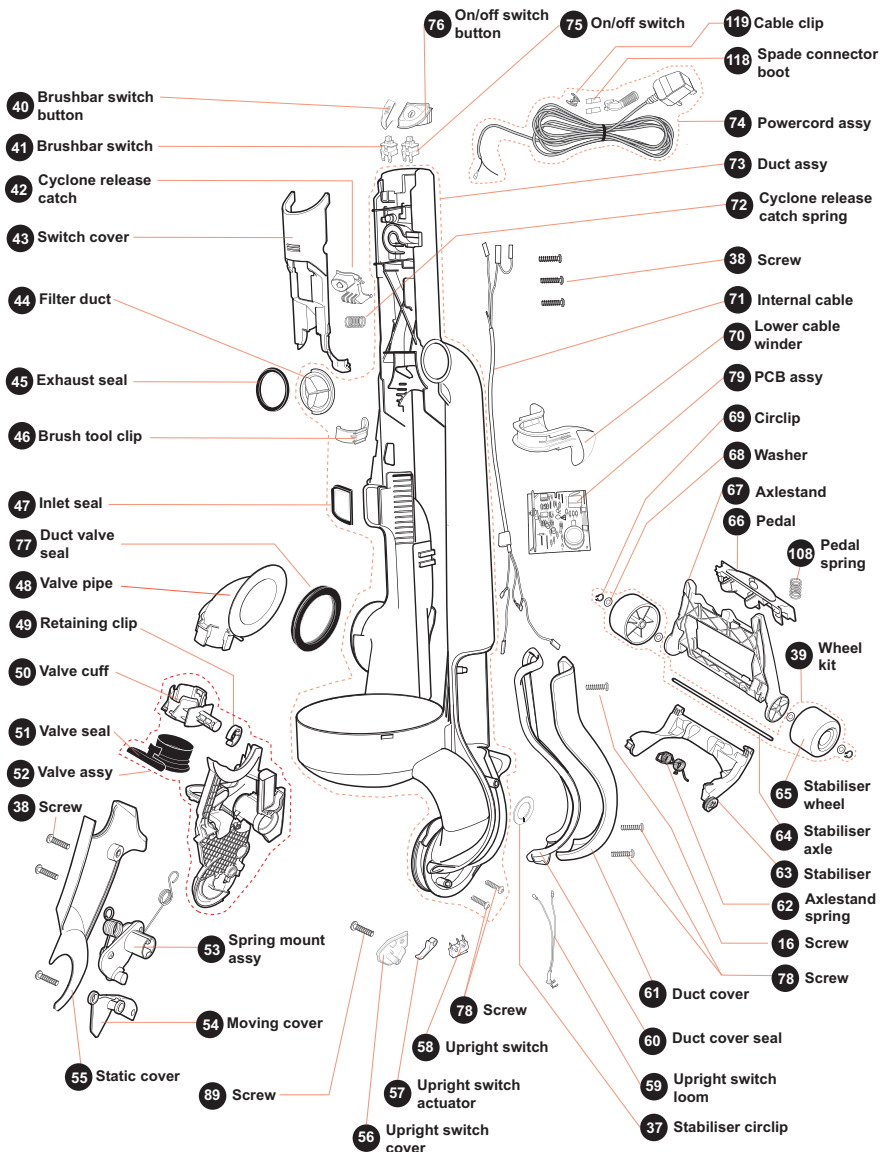
cleanerhead, (pages 19-20)



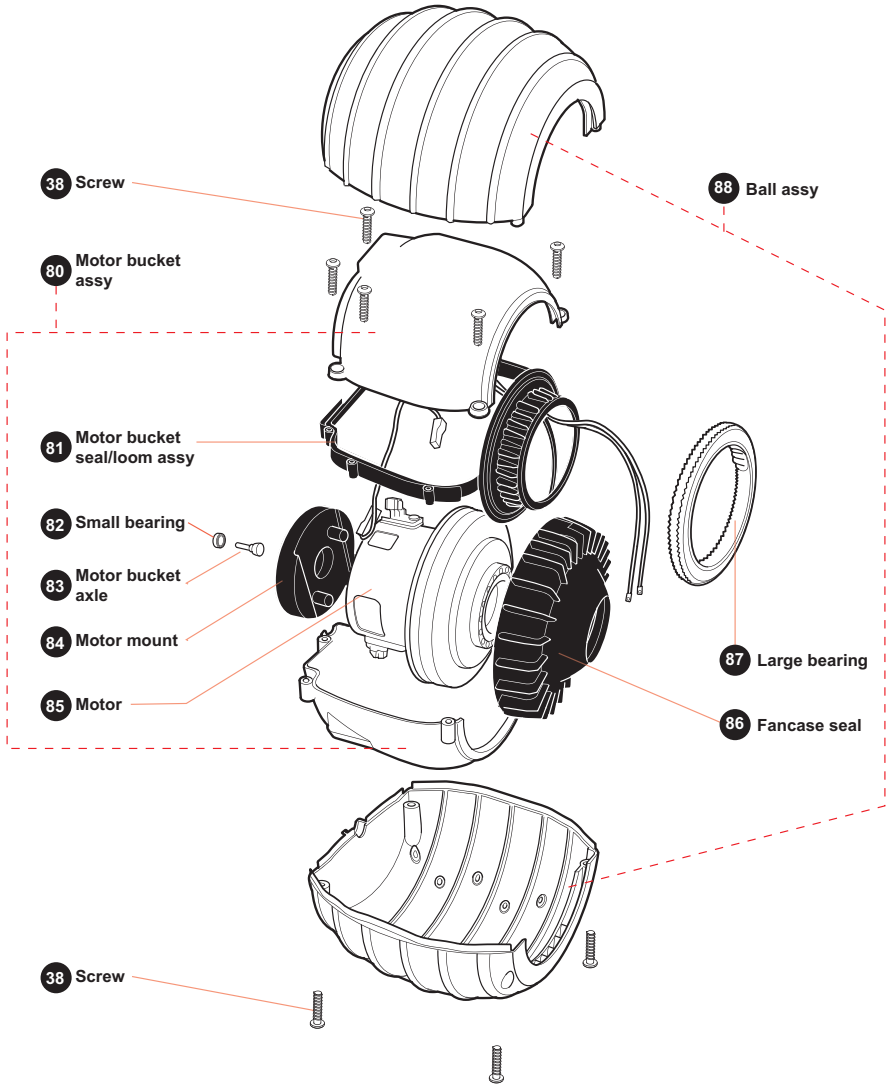
Cleanerhead and yoke assembly



Duct, valve and stabiliser



Motor bucket and ball



Cyclone, bin, wand and hose/u-bend assemblies

