

Occult Electronics

(part 1)

by L. George Lawrence

Throughout history, many an outstanding man has been guided by so-called "occult revelations." Socrates was coached by a disembodied voice, Canadian Prime Minister Mackenzie King was a lifelong visitor to spirit mediums, and even the mentally robust Sigmund Freud discovered that he had psychic propensities.

Today, we witness a revival of occult electronics intended not only to break away from the uncertainties of human mediums, but also to permit structuring of dreams and capture, by instrumental means, *evidence* of starships of Biblical renown.

The evolution of this strange but enchanting panorama traces back to inventor Thomas A. Edison and his attempts to communicate with the dead. As recorded in his *Diary and Sundry Observations*, Edison's formidable genius recognized an immortal dimension that could not be ignored: "Life, like matter, is indestructible. There always has been a certain amount of life on this world and there will always be the same amount. You cannot create life; you cannot destroy life; you cannot multiply life..."

Background

Occultism is a philosophy of hidden forces. It has a natural overlap with religion — the latter dealing, as it does, with supernatural powers believed to be addressable by prayers, deeds, and sacrifice. Occultism has an intense focus on the human soul, and it appears that six stunningly revealing *soul-weighting* experiments, conducted elsewhere, gave Edison exploratory impetus.

In addition, and long concealed by Edison's biographers, Edison's parents

were *spiritualists*. A family friend, John Eggleston, reported the following in the occult publication *Banner of Light* (May, 1896): "... I have many times sat in Circles in their home when the great inventor was a child." Such invites the conclusion that Edison had a strong paranormal ability for intercepting new ideas "out of the blue," as his unparalleled record of 1,093 patents suggests.

In 1906, a physician on the staff of the Massachusetts General Hospital, Dr. Duncan MacDougall, conducted a series of critical experiments designed to ascertain the *weight* of the human soul. A full report was published in the *Journal of the American Society for Psychical Research* (May, 1907). The experiments, *never repeated since*, were of stark simplicity yet effective:

A light frame was built on carefully balanced beam scales, sensitive to within 1/10th of an ounce. The frame held a bed on which patients, in dying condition, were placed and observed. The patients' consent was secured weeks before death, although Dr. MacDougall occasionally had to fend off angry relatives protesting the proceedings.

The experiments involved six patients. In each case, there was a distinct, *sudden* drop of weight at the moment of death. The loss was ascertained to be 3/4th of an ounce and assumed to be the weight of the human soul. A number of dogs were put to sleep also,

again under carefully balanced and monitored conditions, but no similar losses of weight were noted at the very instant of the animals' demise.

These experiments appear to confirm what occultists and artists have envisioned for centuries — namely, that a wonderful something, a youthful astral body vacates the old mortal shell when the time comes. But if this astral body or "soul" has verifiable weight, it must have mass, and therefore be subject to laws laid down when the Universe was formed some 20 billion or more years ago.

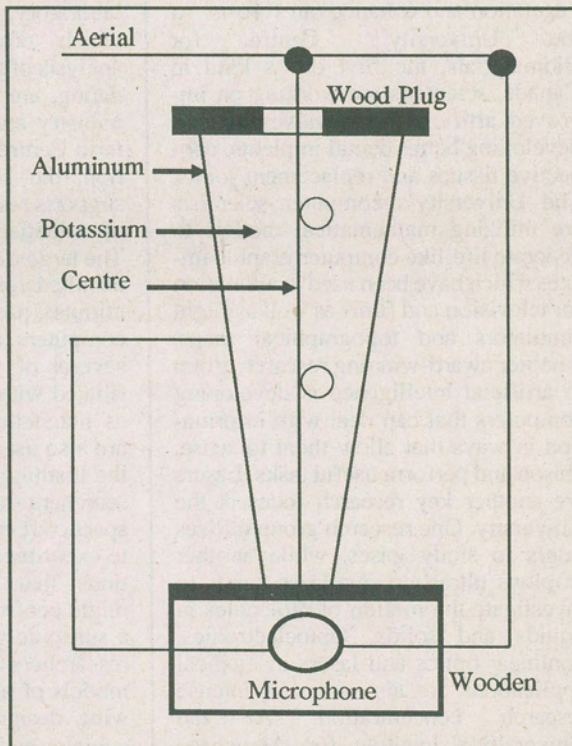


Fig. 1. Purported design of Edison's ELCOWIDE instrument. Based on ethereal modulations of galvanic current and chemical species produced by potassium permanganate. See text.



Thomas A. Edison (1847-1931) in his laboratory. Held world record of 1,093 patents. In 1920, Edison commenced work on apparatus for communication with the dead, triggering eventual rise of occult electronics.

Considering such and other observations, Edison came to the belief that survival after death must in some degree be physical — perhaps in form or as a submicroscopic “entity” somehow interlocked with an immortal, ubiquitous life force. This entity, Edison reasoned, should be able to put forth physical energy and could activate a sensitive mechanism to announce its presence.

Edison was already 73 years old when, in 1920, he related his intentions to his friend, B.C. Forbes, later founder of Forbes magazine. And so, in October, 1920, *American Magazine* pub-

lished a story that not only became a world sensation, but also set occult electronics on its course: “Edison Working to Communicate with the Next World!”

Equipment

No complete model of Edison’s ELCOWIDE (electrical communication with the dead) apparatus remains extant; drawings are fragmented reconstructions. Nonetheless, the information was sufficient to trigger experimental work around the world.

As per Fig. 1, the ELCOWIDE device appears to have been fashioned in the form of an aluminum trumpet. This container was filled with potassium permanganate surrounding a wire attached to an aerial. Because of the potassium permanganate’s oxidizing actions, an electric current was generated and fed, in a series mode, through a microphone. The current and ionic species were supposed to amplify the etheric waves emanated by the “living spirits” against the aerial. The microphone appears to have been a high-impedance *loudspeaker* to permit two-way communication, but was not identified as such.

The ELCOWIDE device did not work in its original form. Subsequently, more advanced and cosmetically more attractive versions arose over a period of years.

The so-called “Omega Phone,” an expensive custom-made device, again reflected Edison’s ideas, but, was operationally augmented by two items deemed important: (1) a sacrificial urn for burning and holding the ashes of paper money, and (2) a dial-operated Hieronymus mechanism for connecting the apparatus to a domestic telephone line functioning as an aerial. Fig. 2 shows the phone. Fig. 3 is the actual patent drawing from which the Hieronymus mechanism was derived.

Titled “DETECTION OF EMANATIONS FROM MATERIALS AND MEASUREMENT OF THE VOLUMES THEREOF,” the Hieronymus machine was *not* an electrical design (it required *no* power supplies!), but an occult instrument generally resembling an LC-tuned resonator circuit. It contained a prism (#28 on the patent drawing), which, when turned to a given position in the presence of an object or phenomenon, was purported to produce a tacky, sticky sensation upon putting fingers to a touch plate (#72 on the patent drawing). See the complete U.S. Patent #2,482,773 for explanations.

Did it work? Yes and no. Some regarded this visually striking apparatus as utter nonsense, while others insisted on having divined much psychological solace and comfort from it, including actual communications, in times of need — typically after the passing of a close relative.

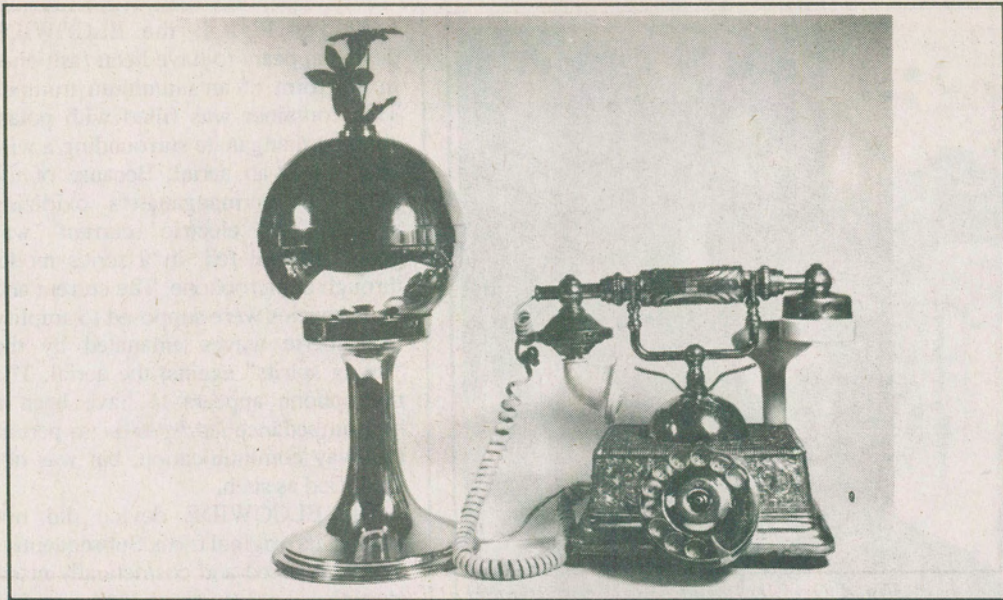


Fig. 2. The Omega Phone. Employed occult Hieronymus mechanism and sacrificial urn to make ethereal communications intense and memorable. Domestic telephone line served as aerial.

The afore-mentioned urn was regarded as critical to successful communication attempts. What was demanded here was a substantial *sacrifice* for making ethereal communications *intense* and, thus, *memorable* over a very long period of time. Reducing, say, 1,000 or more dollars in the Omega phone's urn to ashes would, of course, ensure an enduring effect.

Oddly enough, sacrifice-type constellations pervade throughout the traditional religions and most political systems. Depravations are always effected so that the sacrificers may achieve a purpose or goal of greater value than that of the object sacrificed. Some occult electronics reflect this in that *energy* is obtained in an expensive form and dissipated during a communicative or prayer session.

We see this in the battery-powered sepulchre shown in Fig. 4. As per schematic diagram, Fig. 5, the heart of this occult device consists of an automotive, dual-filament lamp normally rated at 12 VDC. One of the two filaments (F1) functions as an electron emitter (again shades of Edison!), while filament E2 functions as a flexible anode. This is made possible by burning F2 off its mounting fork with high current, typically 117 VAC. Usually, five or more 12-volt lamps must be

sacrificed before the desired break occurs and F2 moves freely.

In operation, filament F1 is brought to a faint glow via potentiometer R1 and the ensuing electron stream conveyed to F2 (now an anode). If an ethereal modulator is present, its actions are expected to give rise to voltage changes, which may then be recorded in a conventional manner. As mentioned above, the condition of sacrifice is met by battery expenses: No pain, no gain!

Borderline Systems

Other occult electronics manage to traverse the fine threshold that separates fact from fiction. The late George W. Van Tassel's *Integratron* or time machine, located in the desert community of Landers (near Palm Springs, California), reflects this.

Shown in Fig. 6, the unit was fashioned in the form of a large electrostatic generator to be driven, turbine-style, by compressed air. Surrounded by a protective double-fence, the In-

tegratron was intended for "basic research on rejuvenation, anti-gravity, time travel." Although the overall structure was a masterpiece of engineering, it remains unclear how electrostatic electricity of whatever voltage — short of electrocution — could deliver the wonders promised. Van Tassel was a certified aircraft mechanic and, in his earlier years, had flown with Howard Hughes. Unfortunately, with Van Tassel's creative genius gone, the project has fallen into disrepair.

Other electrostatic-type devices are of the capacitor variety, seeking to emulate ethereal principles of communication believed to have been embodied in Moses' *Ark of the Covenant*. The old Biblical illustration, Fig. 7, shows "God's radio" in operation. Its construction is detailed in Exodus 25:10 ff., unfortunately only as far as the box, metal, and mounting provisions are concerned. The divine

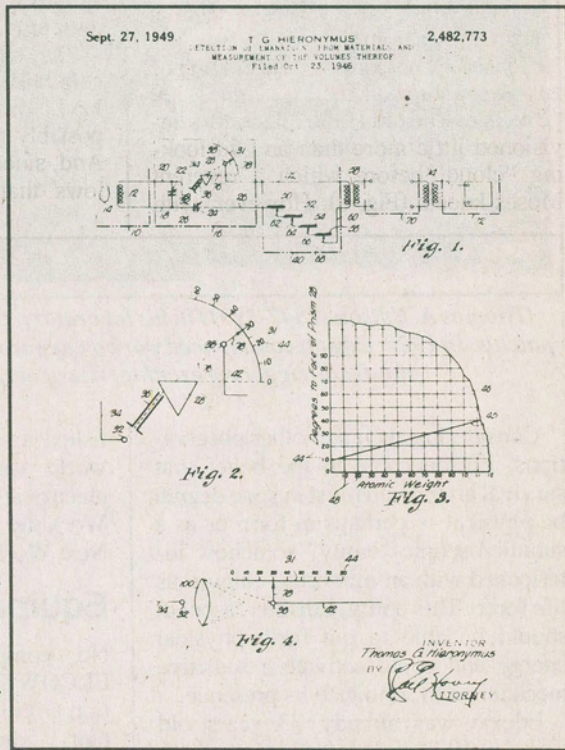


Fig. 3. Title page of U.S. Patent #2,482,773 pertaining to occult Hieronymus machine for 'detection of emanations.' See text.

principle of operation remains unknown, but probably involved far more than a mere application of 2,000 VDC to opposing capacitor plates in order to obtain an electrostatic-type loudspeaker effect.

Curiously enough, it is the so-called *Exodus dimension* which, together with a new interest in the Bible's moral guidelines, continues to supply new ideas to occult electronics. Impetus came from Swiss author Erich von Dæniken's first book pertaining to ancient astronauts (*Chariots of the Gods?*, G.P. Putnam's Sons, N.Y., 1970). Other guidance came from the works of Zecharia Sitchin, most notably *The 12th Planet* (Avon Books, N.Y., 1978), which postulated the *cloning* of modern man in the ancient astronauts' image.

In all of these instances, a vast panorama of ultra-advanced technologies, starships, glorious beings and immortal teachings unfolds before the reader. The "evidence" is of an intensely emotional configuration, with powerful Biblical eyewitness accounts forcing things home.

Consider, for example, the landing of a large starship on Mt. Sinai some 3,500 years ago. The old Bible illustrators envisioned little more than an odd-looking "cloud" before which a reverent Moses kneels (Fig. 8). However, with

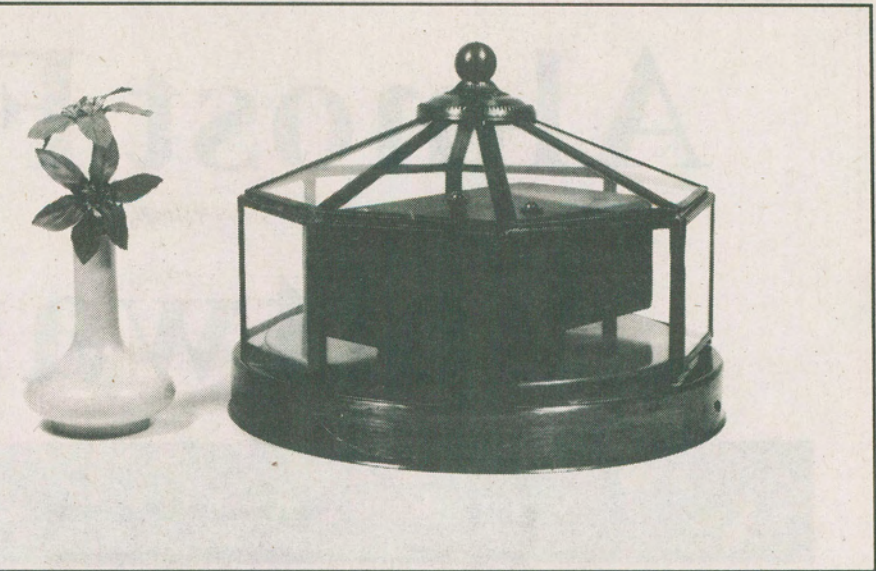


Fig. 4. Occult sepulchre device with internal Edison-effect lamp assembly for battery operation. See schematic, Fig. 5.

the verses of Exodus 19:12 ff. poised and ready, a present-day designer of occult electronics interprets this formidable drama in technical terms. The clues are:

"Whosoever toucheth the mount shall be surely put to death; be stoned or shot through — be it beast or man, it shall not live; when the trumpet soundeth long, they shall come up..."

The modern interpretation: A starship with radioactive engines is about land. The Israelis have to stay clear, possibly three or four miles distant. And, since radiation is involved, it follows that biological precautions are

necessary. A brief glance at Exodus 19:15 reveals the clue:

"And he (Moses) said unto the people: Be ready against the third day: come not at *your* wives."

Clearly, sexual intercourse was forbidden so as not to produce mutant progeny due to presence of radioactivity. They also washed their clothes — all hypermodern instructions! Of course, the *real* God would not need to sound a noisy siren, shoot trespassing men and animals with modern weapons (lasers?), and decree all those safeguards against radiation poisoning.

The "Magnetwin," shown in Fig. 9, is aligned with these Biblical interpretations. The device contains a small Geiger counter, amplifier with bottom speaker, and a pair of compass devices on top. This borderline item is able to sense nuclear radiation and strong, sudden variations in the Earth's geo-magnetic field — such as a starship of Biblical renown might be able to produce. The novelty is an articulated fiber-optic sensor for detecting motions of a compass needle. Alarms are controlled by knobs. The Magnetwin is said to have a sensitivity of about 50,000 gamma, which equals the average geomagnetic-field intensity or strength in the continental United States. 1 oersted/gauss equals 100,000 gamma; 1 gamma equals 1 nT (nanotesla). A common horseshoe magnet has an intensity of about 1,000 oersted/gauss. An interesting device!

Continued in next issue

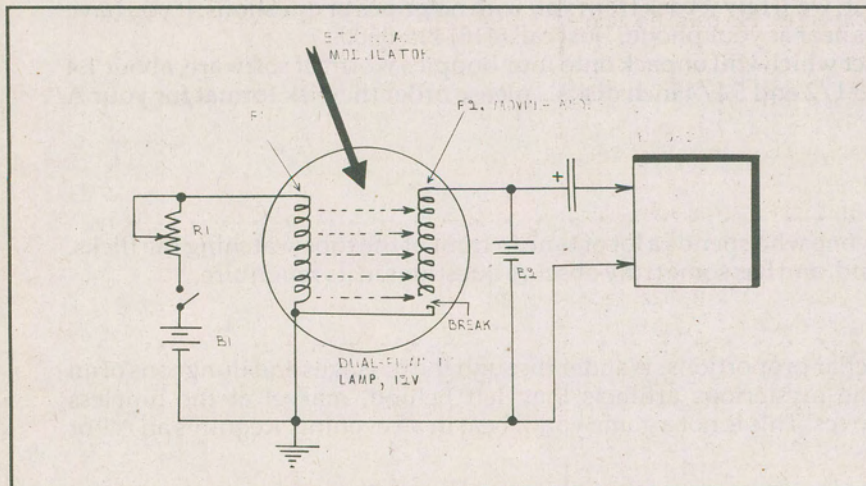


Fig. 5. Operation of sepulchre device was based on ethereal modulation of electron stream emanated by battery-powered filament F1 and conveyed to moving filament F2 acting as anode. Use of expensive batteries satisfied sacrificial requirements.