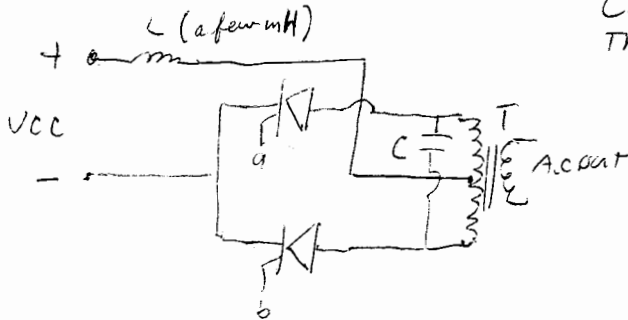


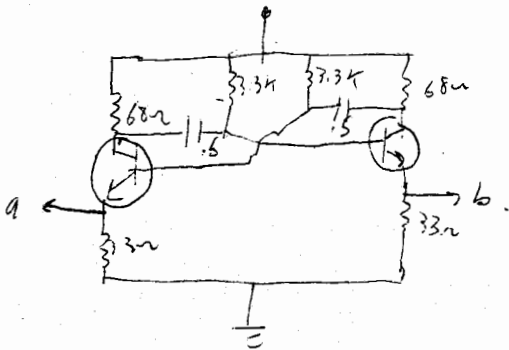
DC - AC CONVERTER



✓
 CHOOSE C TO RESONATE WITH THE L OF T FOR SINE WAVE OUTPUT AND AWAY FROM RESONANCE FOR SQUARE WAVE.

V_{ia} included to limit the current as for a short time each cycle, ~~the~~ both SCR'S conduct.

DRIVER FOR ABOVE



DESIGNED FOR 12V