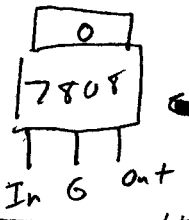
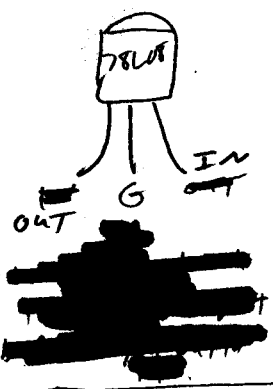


IF INPUT GOES OVER 14V IT ADDS ABOUT 2-3V OF DROP

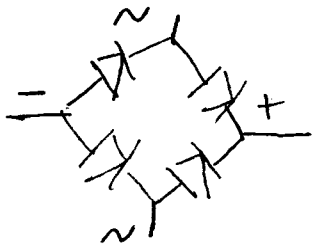
D1, D2 - short if omitted.  
 D3 - open if omitted



If using 358 instead of 324  
 Pin 8 = VCC  
 Pin 4 = GND  
 PINS 1, 2, 3, 5, 6, 7 = Same as 324.  
 9 to 14 omitted.

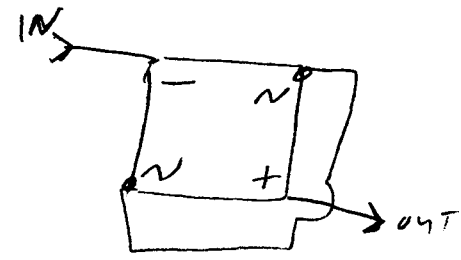
Dan Fraser  
 Aug 7, 1996

Hurricane Heater  
 HIGH VOLTAGE REDUCER



Bridge rectifier - CONNECTION ->

If used.



Short the two AC terminals together.

Do not buy Schottky or HIGH SPEED RECTIFIERS