

Cameras can get smaller and still have all the power

Our Power over Ethernet (PoE) reference design offers an easy and reliable solution for machine vision camera designs



View reference design



Cameras can get smaller and still have all the power

Our Power over Ethernet (PoE) reference design offers an easy and reliable solution for machine vision camera designs



View reference design





- [PRODUCTS](#)
- [APPLICATIONS](#)
- [EE FORUMS](#)
- [EE LEARNING CENTER](#)
- [VIDEO](#)
- [RESOURCES](#)

# Basics of power-supply self-protection

JUNE 21, 2017 BY BILL SCHWEBER — LEAVE A COMMENT

AC/DC and DC/DC power supplies are normally relatively rugged in normal operation. Nonetheless, there are some protection features built into most of these units to ensure that they do not "self-destruct" or damage associated circuitry – primarily their loads – in the event of a failure or out-of-spec operational mode.

(note: in strict terms, a power supply is either an AC/DC or DC/DC unit, but the latter are also called converters or regulators as well. However, the usage associated with these terms is often sloppy, especially in casual conversation.)

## Isn't a fuse all that is needed to protect the supply and the load?

Yes and no. A fuse protects the supply if the load-path short circuits, or begins to draw too much current. A fuse may not be needed, as many supplies "self-limit" in the sense that they can only supply up to a certain amount of current. A fuse that opens will need to be replaced manually, and this is a problem in many applications (but a virtue on others). Plus, a fuse cannot protect against other types of failure or mis-operation, other than too much current on the output.

## What is Undervoltage Lockout (UVLO)?

**NEW...Smallest High Voltage Reed Relay**

1.5kV Min Stand-off | 1kV switching  
12.5mm x 3.7mm footprint


Request your free sample now



Series 131



### DESIGNFAST



Component Selection Made Simple.

Try it Today

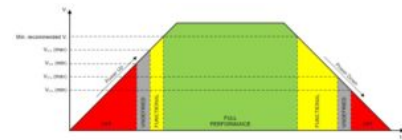
Cameras can get smaller and still have all the power

Our Power over Ethernet (PoE) reference design offers an easy and reliable solution for machine vision camera designs

View reference design



UVLO ensures that a DC/DC converter does not attempt to operate when the input voltage it sees is too low, **Figure 1**. This is done for two reasons: first, circuitry within the converter may malfunction or act in an indeterminate way if the input DC voltage is too low, and some higher-power components may actually be damaged; second, it prevents the converter from drawing on primary power even if it can't produce valid output power. This latter aspect means that a source such as a battery that was delivering insufficient voltage to a converter could still be further drained by the converter. As a consequence, the recharge time for the battery will be longer, especially if it from an energy-constrained source such as energy harvesting.



**Fig 1: A power supply does not "instantly" come up to full output, but instead has turn-on and turn-off transitional ranges and time; UVLO ensures the supply does not attempt to provide a full output when its input voltage is below the minimum needed for proper operation. (Source: Texas Instruments)**

To implement UVLO, a small, low-power comparison circuit within the converter compares the input voltage to a preset threshold, and puts the supply into quiescent mode until the threshold is crossed. To ensure that the UVLO does not chatter around threshold, a small amount of hysteresis is used with it. So, for example, the supply will turn off when the input drops below 5.0 V, but will not turn on until the rising voltage reaches 5.5 V

**What is Overvoltage Protection (OVP)?**

Although a supply or converter is designed to normally produce a fixed DC-output voltage, an internal failure in the supply may cause this voltage to rise, and possibly damage the load to which the supply is connected. This failure could be due to a short circuit in a wiring harness, the failure of a passive component, or failure of an active device such as a MOSFET. Regardless of source, it is certainly undesirable by itself, but especially if it also can damage the load. OVP is a function that monitors the output versus an internal reference and short-circuits that output if the voltage rises above the threshold.

The circuit that monitor and trips is called a "crowbar," supposedly so named because it has the same effect as placing a metal crowbar across the output. Key to a properly designed crowbar is that it is both simple and that it functions independent of the supply itself, **Figure 2**.

SUBSCRIBE TO OUR NEWSLETTER

The Power Electronic eNewsletters are breaking electronic and power news, resources, product innovation and more.

Subscribe Today

Industry News | Resources |



TEST & MEASUREMENT HANDBOOK

Design World


Test & Measurement Handbook

Access to 8.7 Million+ Products Online

DIGIKEY.COM

View Back Issues    Subscribe

UHP-2500 Series Fanless Conduction-cooled Power Supply



**MW** MEAN WELL    **SAGER** POWER SYSTEMS

A SPECIALIZED GROUP WITHIN SAGER ELECTRONICS

Cameras can get smaller and still have all the power

Our Power over Ethernet (PoE) reference design offers an easy and reliable solution for machine vision camera designs

View reference design



Cameras can get smaller and still have all the power

Our Power over Ethernet (PoE) reference design offers an easy and reliable solution for machine vision camera designs

▶ View reference design

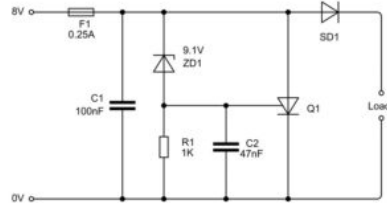



Fig 2: This crowbar circuit operates from an 8-V supply and has its overvoltage protection set at 9.1 V (this can be changed by using a different Zener diode ZD1 to one with the preferred voltage; at 9.1 V, the Zener diode starts to conduct and causes a trigger signal to switch on the thyristor Q1 (note that the fuse is for protection against excessive current).

There are two kinds of crowbars: one where the crowbar, once tripped, will only be reset if the power is turned off; and one where it will reset itself once the output-voltage fault is cleared. The second one is useful when the condition which tripped the crowbar is due to some sort of transient rather than a hard failure in the supply. While most supplies now come with a built-in crowbar, many vendors offer a small, separate crowbar circuit that can be added to an existing supply if needed.

### What is thermal overload protection?

By its nature, any power supply generates heat because it is less than 100% efficient. Even an efficient supply generates a potentially troublesome amount: a 100-W supply which is 90% efficient still dissipates 10 W, which is very capable of warming up an enclosure. For this reason, the supply must be designed with sufficient active cooling (such as a fan) or passive cooling (achieved by convection and conductive cooling).

But what happens when the fan fails, or the air-flow path is blocked, or another heat source is introduced into the enclosure? The supply may exceed its temperature rating, which severely shortens its life and may even cause immediate malfunction. The solution is a circuit within the supply that senses the temperature and puts the supply into a quiescent mode if it exceeds a preset limit. As with OVP, some thermal cutoffs automatically allow the supply to resume operation if the temperature drops, and others do not. Which approach is "better" depends on the nature of the application and usage cycle.

These are the primary internal protection mechanisms in a power supply or converter. There are also "defenses" against external events and malfunctions which are usually provided outside the supply or as add-on adjuncts.


Reference:

EE TRAINING CENTER CLASS

Cameras can get smaller and still have all the power

Our Power over Ethernet (PoE) reference design offers an easy and reliable solution for machine vision camera designs

▶ View reference design




---

EE INDUCTOR

Resources to guide you through inductor specifications, applications, frequencies, voltage and ratings.

EE POWER SUPPLY

DC/DC Book of Getting through compliance test Power Factor Correction

EE PCB CONNECTIONS

Topics include PCBs matter, connectors fail

EE POWER DELIVERY

POWER DELIVERY TOPICS — delivered in tutorials, reference designs and short-form articles.

EE Motor Drives

Resources on the basics of rotary encoders, field-oriented motor control (FOC) and more!

EE Medical Technology

Reference designs that provide the foundation to create devices.

---

CURRENT EDABOARD.COM DISCUSSIONS

▶ INL/DNL Simulation in Cadence of ADC and DAC

Cameras can get smaller and still have all the power

Our Power over Ethernet (PoE) reference design offers an easy and reliable solution for machine vision camera designs

[View reference design](#)



Texas Instruments SLVA769, "Understanding Undervoltage Lockout in Display Power Devices"

FILED UNDER: [FAQ](#), [FEATURED](#), [INDUSTRY EXPERTS](#), [POWER SUPPLIES](#)  
 TAGGED WITH: [BASICS](#), [FAQ](#)

## Leave a Reply

Your email address will not be published. Required fields are marked \*

Comment

Name \*

Email \*

Website

POST COMMENT

> [Nylon \(polyamide\) PCB start reduce ESD problem?](#)

> [\[Moved\]Outsourcing Programming...really dead?](#)

> [what is the difference of creating inside initial block or outside block](#)

> [Cadence simulation NMOS](#)

 CURRENT ELECTRO-TECH-ON DISCUSSIONS

> [Help to identify a fuse.](#)

> [Stumped by a 2CH RF relay](#)

> [DIY bluetooth speaker](#)

> [Funny Images Thread!](#)

> [LT spice problems](#)

Cameras can get smaller and still have all the power

Our Power over Ethernet (PoE) reference design offers an easy and reliable solution for machine vision camera designs

[View reference design](#)



Cameras can get smaller and still have all the power

Our Power over Ethernet (PoE) reference design offers an easy and reliable solution for machine vision camera designs



[View reference design](#)



This site uses Akismet to reduce spam. [Learn how your comment data is processed.](#)



Cameras can get smaller and still have all the power

Our Power over Ethernet (PoE) reference design offers an easy and reliable solution for machine vision camera designs

**MEDICAL TECHNOLOGY**

**Training Center Class**

This training center presents reference designs that provide a foundation to create devices including ultrasound scanners, machines, ECGs, and wearable fitness and activity monitors



[View reference design](#)



**LEARN MORE** 

Sponsored by:  **TEXAS INSTRUMENTS**

---

FOLLOW US ON TWITTER

---

#### EE WORLD ONLINE NETWORK

- [DesignFast](#)
- [EE World Online](#)
- [EDA Board Forums](#)
- [Electro Tech Online Forums](#)
- [Connector Tips](#)
- [Microcontroller Tips](#)
- [Analog IC Tips](#)
- [Sensor Tips](#)
- [Test and Measurement Tips](#)

#### POWER ELECTRONIC TIPS

- [Subscribe to our newsletter](#)
- [Advertise with us](#)
- [Contact us](#)
- [About us](#)



Cameras can get smaller and still have all the power

Our Power over Ethernet (PoE) reference design offers an easy and reliable solution for machine vision camera designs

▶ View reference design



## Wire and Cable Tips 5G Technology World

Copyright © 2020 · WTW Media LLC and its licensors. All rights reserved.  
The material on this site may not be reproduced, distributed, transmitted, cached or otherwise used, except with the  
Privacy Policy

### Tweets by @PowerElectTips

 **Power ElectronicTips**  
@PowerElectTips

NEW @EEWorldOnline Training Center Classroom: Power Supplies with Medical  
[▶ bit.ly/3ahQjFg](https://bit.ly/3ahQjFg)



Sponsored by **REGOM**

Power ElectronicTips Retweeted

 **TDK-Lambda Americas**  
@tdklambda

[Embed](#)

Cameras can get smaller and still have all the power

Our Power over Ethernet (PoE) reference design offers an easy and reliable solution for machine vision camera designs

▶ View reference design



[View on Twitter](#)