

Dictation Products Service Bulletin

CSA-15

Sony Service Company - Technical Services
A Division of Sony Electronics Inc.
Sony Drive, Park Ridge, New Jersey 07656

Model: BM-890, DTI-800

No. 28

Subject: Circuit Change Required for BM-890 to be used
with DTI-800

Date: June 15, 1995

Symptom:

(**)

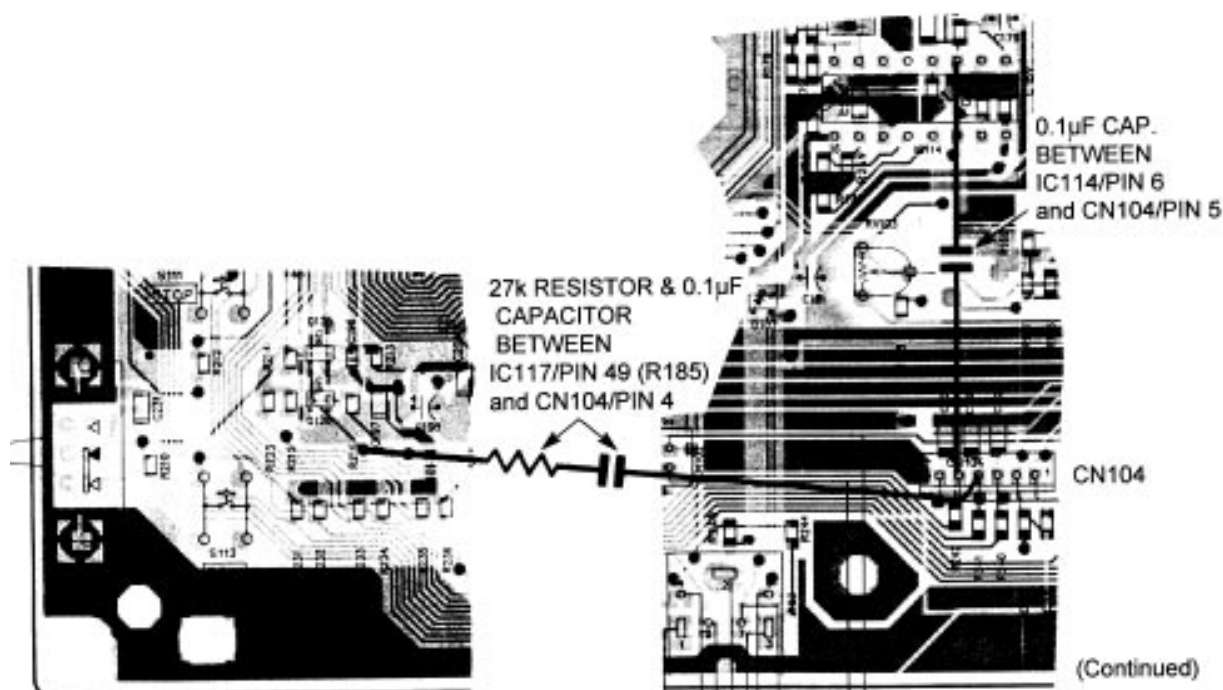
BM-890 does not work with telephone interface DTI-800.

Solution:

BM-890 requires the following parts added in order to work with DTI-800.

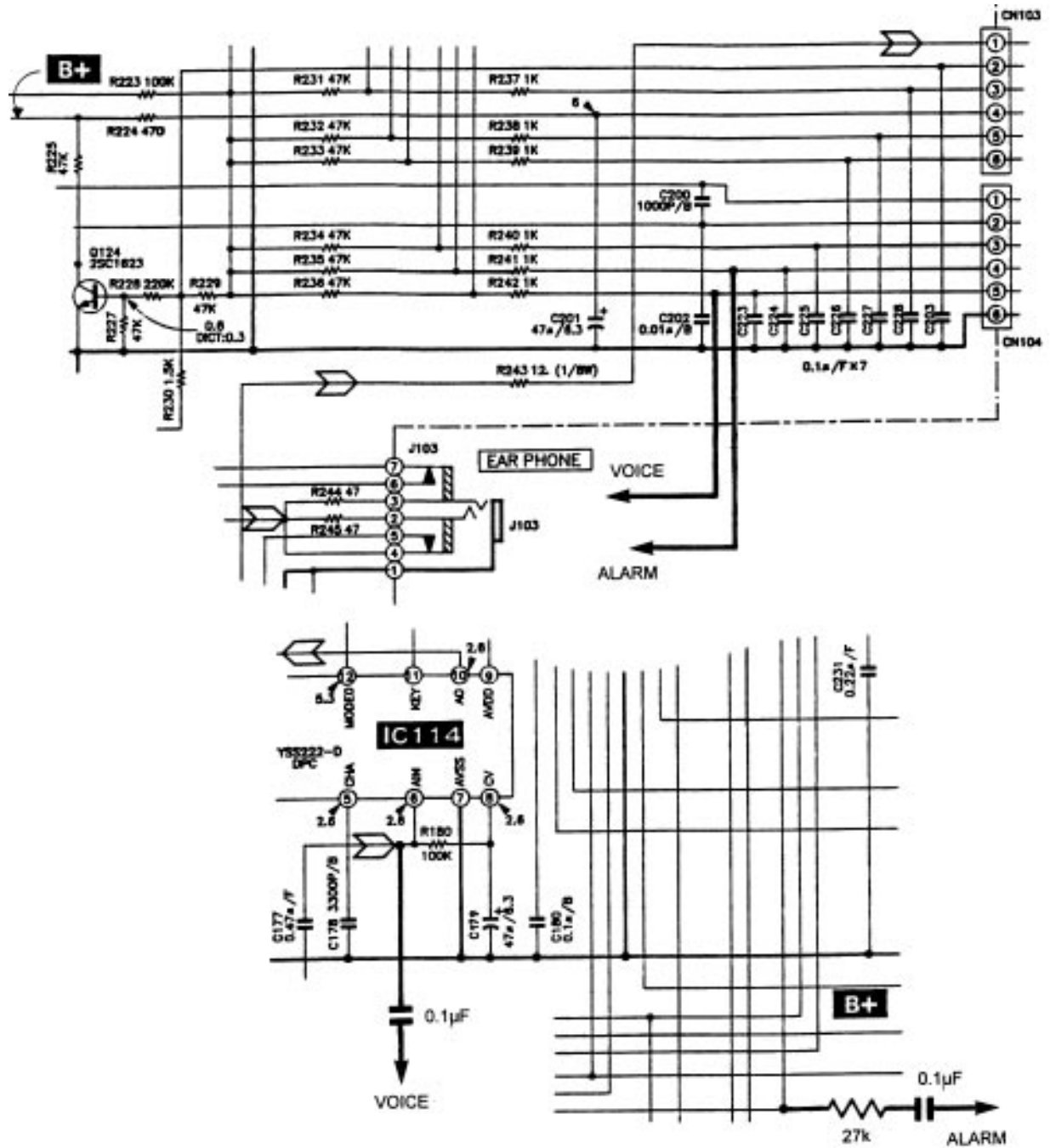
| Q'TY | DESCRIPTION | PART NUMBER |
|------|-----------------------|--------------|
| 2 | CERAMIC, 0.1UF 16V | 1-162-851-11 |
| 1 | RESISTOR, 27KOHM 1/4W | 1-249-434-11 |

- Install 0.1uF capacitor between CN104 Pin 5 and IC114 Pin 6.
- Install 0.1uF capacitor and 27 kohm resistor in series between CN104 Pin 4 and the junction of IC117 Pin 49 and R185.



Dictatiion Products Service Bulletin No.28

- Use isolation material as necessary.



Filename: DIC0028.SB
Directory: J:\SBDOC\JUN95
Template: C:\WINWORD\TEMPLATE\S_BULL.DOT
Title:
Subject:
Author: Hoyt Wing Lee
Keywords:
Comments:
Creation Date: 06/15/95 9:36 AM
Revision Number: 2
Last Saved On: 06/15/95 9:36 AM
Last Saved By: Hoyt Wing Lee
Total Editing Time: 1 Minute
Last Printed On: 04/01/96 9:03 AM
As of Last Complete Printing
Number of Pages: 3
Number of Words: 147 (approx.)
Number of Characters: 842 (approx.)