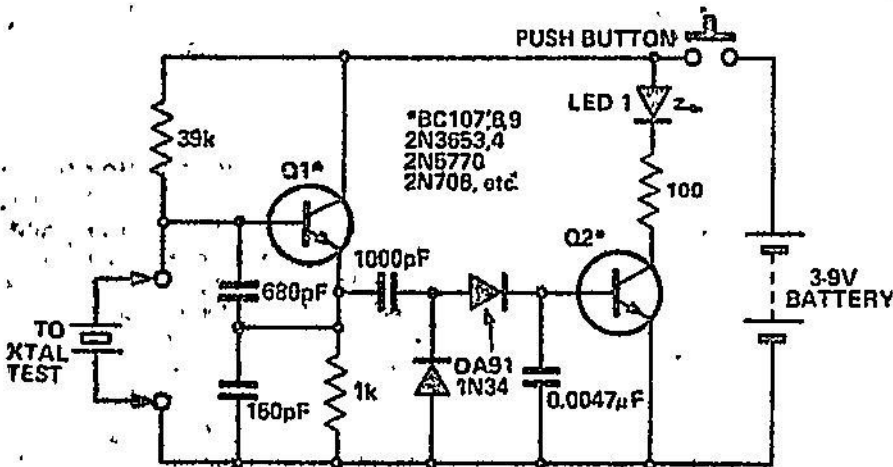


CRYSTAL CHECKER



For checking fundamental HF crystals on a 'Go-No Go' basis, the above circuit works quite well. An untuned Colpitts oscillator drives a voltage multiplier rectifier and a

current amplifier. If the crystal oscillates, Q2 conducts and the LED lights. A3 or 6V, 40mA bulb could be substituted for the LED.