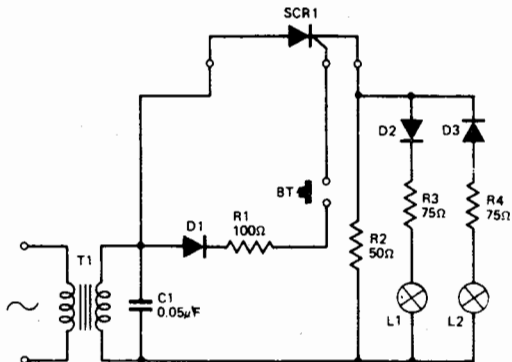


SCR TESTER



With a good SCR, lamp L1 (6.3 volt 0.25A) will come on, and stay on, only whilst push button BT is depressed. If Lamp L1 comes on before the push button is pressed the thyristor defective — most probably due to an internal short.

If both lamps turn on simultaneously then the SCR is completely short circuited.

The same circuit may be used to test power diodes rated at 500 milliamp or more. In this case of course a good diode will light lamp L1 and a shorted one will light both lamps. If neither lamp lights the diode is open circuit. The polarity of a good diode will be indicated by which lamp turns on.

Diodes D1-D3 should be capable of carrying 300 mA and transformer T1 should have a 25 volt 300 mA secondary.