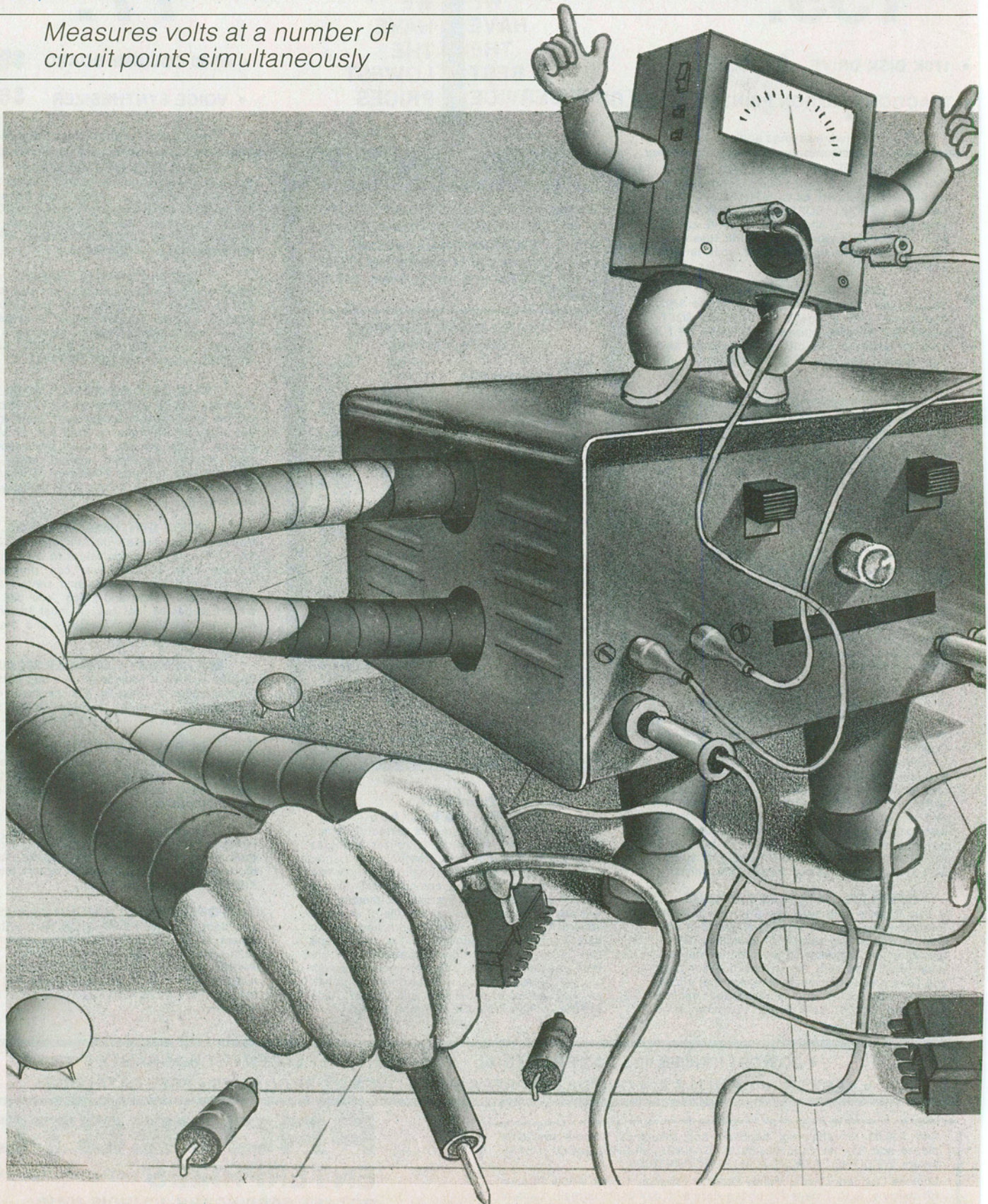


# A MULTIPLE TEST-POINT

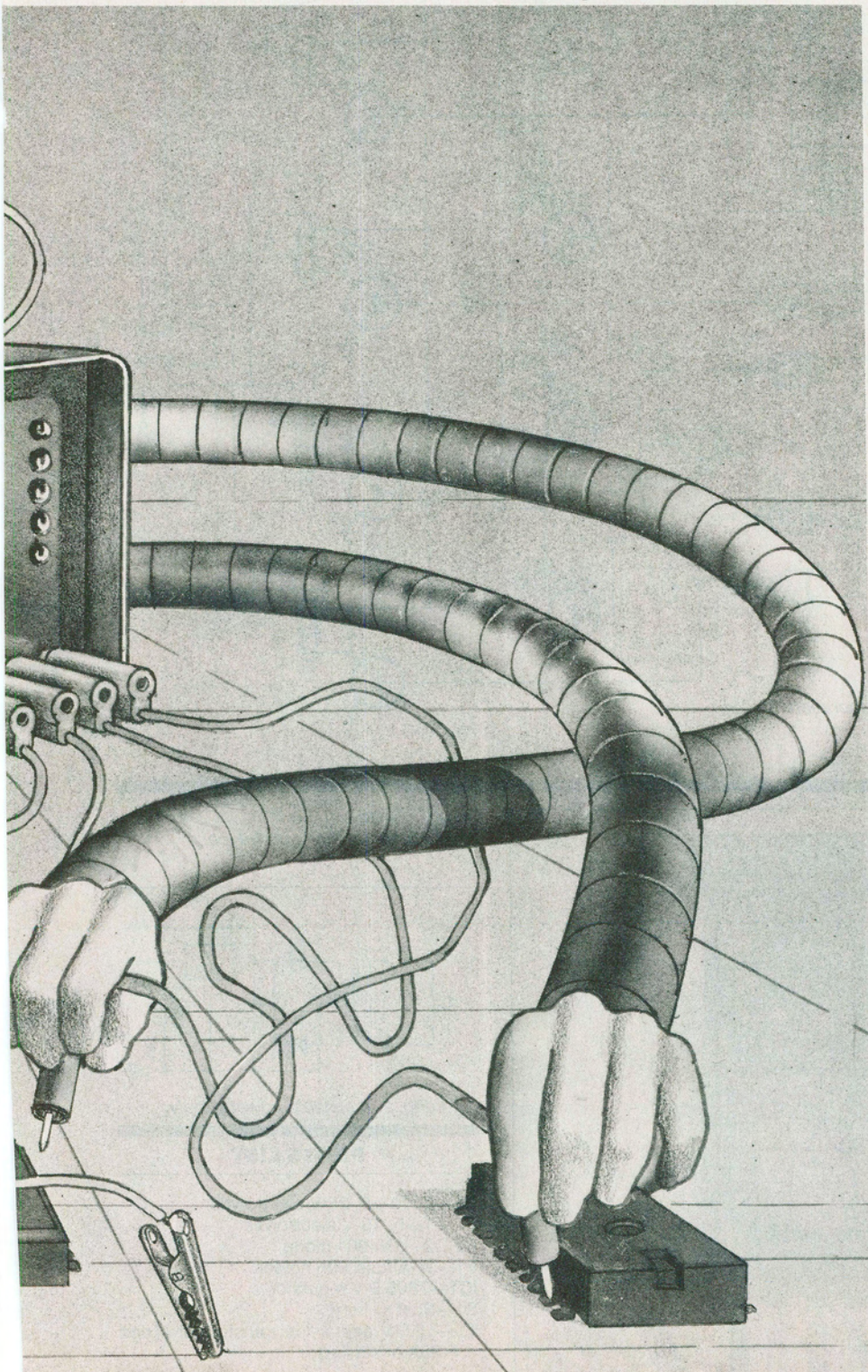
*Measures volts at a number of circuit points simultaneously*



# MONITOR

By George Gooder

HAVE you ever had a situation arise in troubleshooting or aligning an electronic circuit when adjustments of a potentiometer, capacitor, or coil caused two or more test point signals to vary simultaneously? When this happens, you must either move your test equipment inputs from one point to another or use several pieces of the same equipment to monitor each test point at the same time.



The Multiple Test-Point Monitor described in this article overcomes this problem. It can measure up to four test points at intervals of 1 to 10 seconds. All four test points can have the same polarity, or two can have positive polarity and the other two negative. The monitor can also be set to operate on two test points only or "look" at one preselected test point indefinitely.

**Circuit Operation.** As shown in Fig. 1, the circuit is based on IC2, a 4-bit shift register. The inputs to this register are loaded with a binary "1000" when pins 4, 5, and 6 are low, and pins 9 and 10 are high.

When pin 10 is forced low and the right shift is activated by a signal on pin 2, clock pulses from IC1 shift the 1 bit to the right thus changing the binary word at pins 12 through 15. After a 2- or 4-bit shift (whichever is selected by S2), the 1 bit returns to the A output (pin 15).

Switch S2 performs two functions. It initializes the IC2 ABCD inputs to binary 1000 and sets the system to shift 2- or 4-bit positions. When S2 is momentarily activated, it places a low at pin 1 of IC3A (a set-reset flip-flop) which forces its pin 3 high. This high is coupled to pin 10 of IC2. With pin 9 of IC2 tied to high, the next clock pulse will initialize IC2. The low-to-high transition at IC3A pin 3 is also fed to the clock input of IC6A to toggle this flip-flop. When IC6A is set, IC2 shifts 4 bit positions, and when IC6A is reset, IC2 shifts 2 bit positions. The shift is actuated by a closure of momentary switch S2 for one clock pulse.

Transistors Q1 and Q2 are driven by the A and B outputs of IC2, while IC4A and IC4B gate bits C and D from IC2 to transistors Q3 and Q4, with IC6A inhibiting or enabling the two gates. When IC6A is set, the gates are enabled, and when IC6A is reset, they are inhibited. Gate IC4B's output at pin 6 is also fed to IC5A to reenter the 1 back into the shift register A position after 4 shifts, while IC4C shifts the 1 back to the shift register when the system is in a 2-bit monitor position. Gate IC4C is enabled or inhibited by IC6A depending on whether the latter IC is set or reset. Gate IC5B puts bits A and B from IC2 through to one section of S3 to activate Q5. Transistor Q5 and relay K5 form a polarity-switching network that allows negative signals to be monitored at J1 and J2 without changing the voltmeter leads.

The clock signal generated by IC1 can be adjusted from one pulse per second to one pulse every 10 seconds by potentiometer R3. The clock output is fed to one input of AND gate IC4D, whose other input comes from the set-reset

## ... TEST-POINT MONITOR

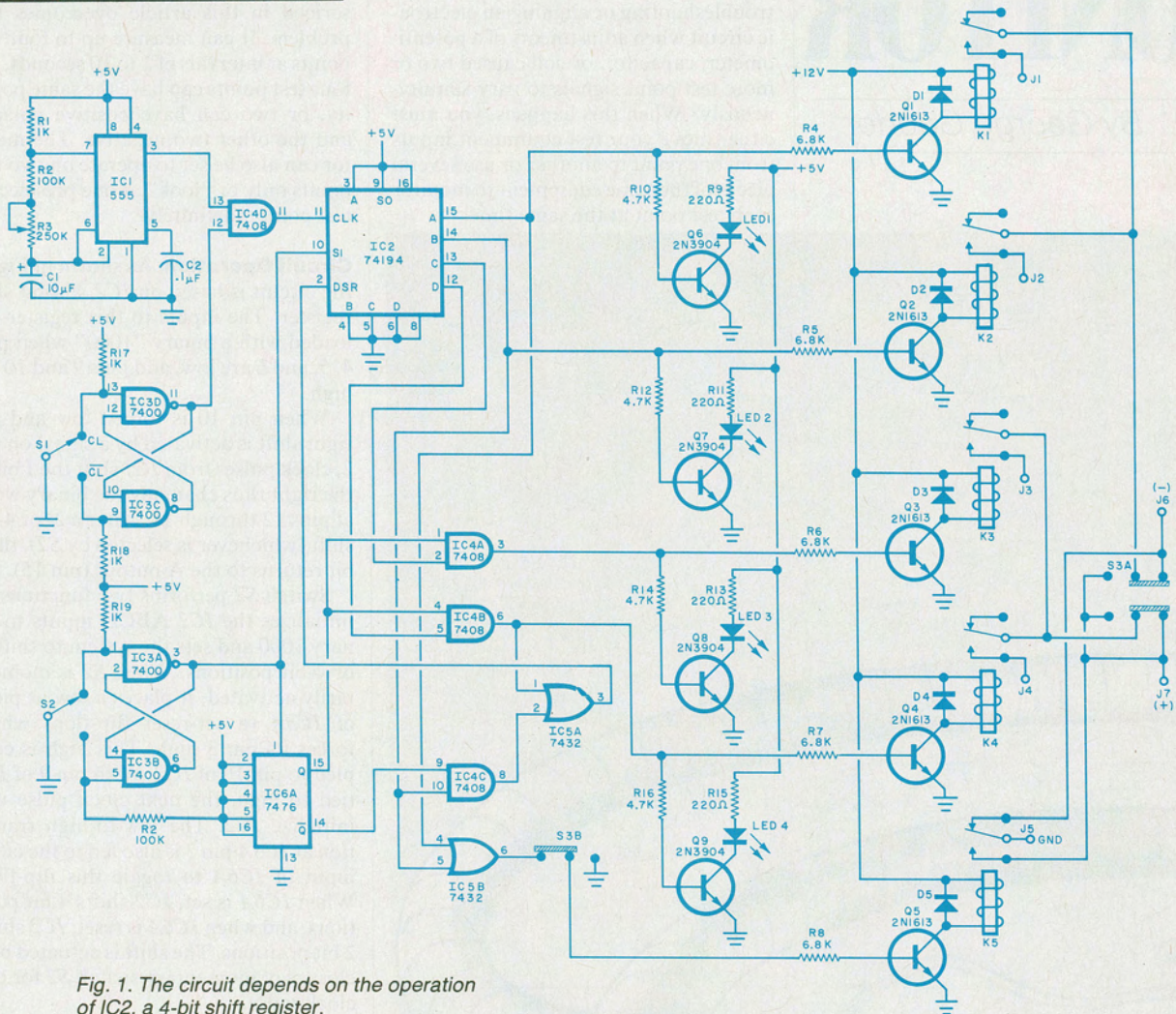
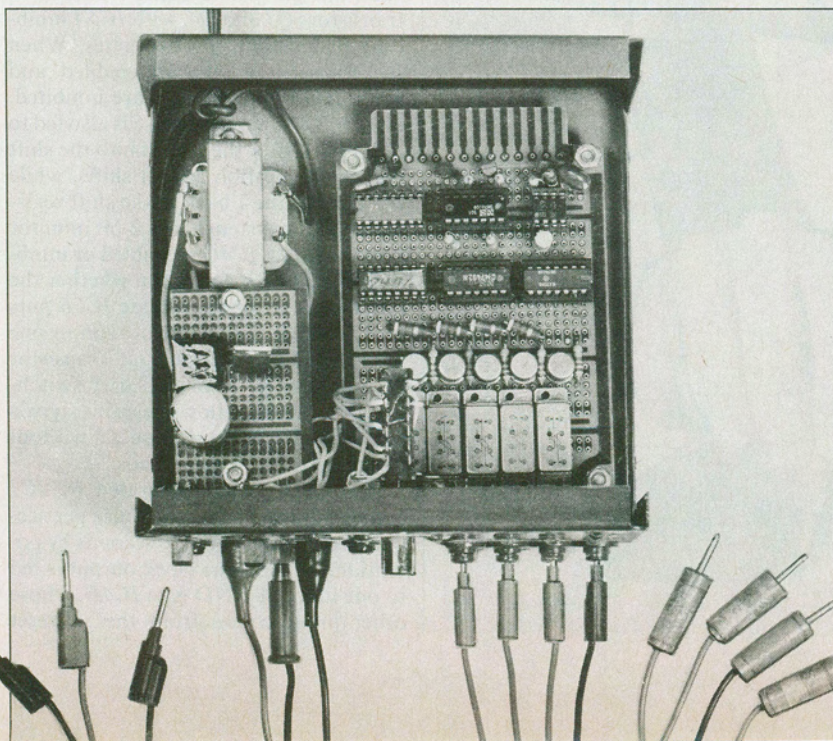


Fig. 1. The circuit depends on the operation of IC2, a 4-bit shift register.



At left is a view of the inside of the author's prototype.

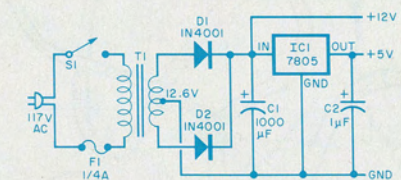


Fig. 2. A suitable power supply.

### PARTS LIST

- C1—1000- $\mu$ F, 25-V electrolytic
- C2—1- $\mu$ F, 10-V electrolytic
- D1, D2—1N4001 diode
- F1— $\frac{1}{4}$ -A fuse with holder
- IC1—7805 5-V regulator
- S1—Spst switch
- T1—12.6-V center-tap transformer (Triad F-25X or similar)

## PARTS LIST (Fig. 1)

C1—10- $\mu$ F electrolytic  
 C2—0.1- $\mu$ F capacitor  
 D1 through D5—1N914 diode  
 IC1—555 timer  
 IC2—74194 4-bit shift register  
 IC3—7400 quad 2-input NAND gate  
 IC4—7408 quad 2-input AND gate  
 IC5—7432 quad 2-input OR gate  
 IC6—7476 dual JK flip-flop  
 J1 through J7—Banana connector  
 K1 through K5—Spdt relay  
 LED1 through LED4—Red light-emitting diode  
 R1,R17 through R20—1-kilohm, 5%, 1/2-W resistor  
 R2—100-kilohm, 5%, 1/2-W resistor  
 R3—250-kilohm potentiometer  
 R4 through R8—6.8-kilohm, 5%, 1/2-W resistor  
 R9,R11,R13,R15—220-ohm, 5%, 1/2-W resistor  
 R10,R12,R14,R16—4.7-kilohm, 5%, 1/2-W resistor  
 S1—Spdt slide switch  
 S2—Spdt momentary-contact switch  
 S3—3pdt slide switch  
 Q1 through Q5—2N1613 transistor  
 Q6 through Q9—2N3904 transistor  
 Misc.—Suitable enclosure, knob, press-on types, etc.

flip-flop formed by IC3C and IC3D.

The IC3 flip-flop is switched by the operation of S1 to either enable or inhibit the clock signal from reaching IC2. Stopping the clock signal allows indefinite monitoring of one selected test point.

The four lines driving relay drives Q1 through Q4 are monitored by transistors Q6 through Q9, each of which has a LED and associated current-limiting resistor as a collector load. When the line goes high, it activates both sets of transistors thus selecting one line and indicating it by the glowing LED.

**Construction.** Since parts placement is not critical, any type of construction can be used. Once a board has been constructed, it can be mounted with the associated relays and a power supply (see Fig. 2 for a circuit) in a convenient enclosure. The front panel should mount the four input banana connectors J1 through J4, the system ground connector J5, clock speed control R3, and the three switches (S1 through S3).

Input connectors J1 through J4 are connected to the signals of interest, while J5 is connected to the tested system's ground. Connectors J6 and J7 connect to the monitoring device being used (voltmeter, scope, etc.) in accordance with the polarity specified by J6 and J7.  $\diamond$

# BEEP! BEEP! BE...

Add a power-failure sensor to any ac digital clock

By James Antonakos

**M**OST digital clocks do not have the backup circuits (reserve power supply and oscillator) necessary to keep them running during a power outage. Thus, it is possible that someone glancing casually at a clock can be misled as to the time. One way to combat this problem is to install the "Power Out Sensor" in your digital clock. After a power failure, the circuit will "beep" until you reset the clock.

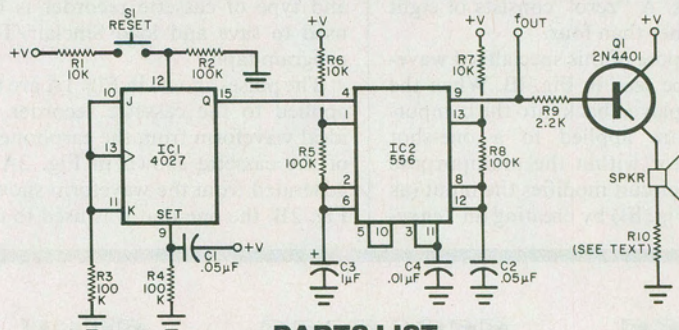
**Circuit Operation.** When power is first supplied to the circuit, a positive spike, produced by C1, is applied to the SET input of flip-flop IC1. This causes the Q output to go high and enables one half of the dual timer, IC2. The latter oscillates at about 5 Hz, alternately enabling the other half, a 1-kHz oscillator. The circuit will continue to oscillate until the flip-flop is reset by momentarily closing S1. This forces Q low

and disables the timer. The circuit will remain in this state because the inputs to the 4027 are grounded through R3. Therefore, the circuit is actuated only when power is shut off and then re-applied.

The output from IC2 is applied to emitter follower Q1, which drives the speaker through R10. The value of the latter resistor is selected for the desired audio level. If the clock is a radio alarm, its speaker can be used, or any small type of speaker can be added. If desired, the audio oscillator output from pin 9 of IC2 can be used to drive any external audio system.

**Construction.** Assembly is not critical. The prototype was built on a standard perf board cut to fit into the clock to be used. A printed-circuit board could be used but is not required and is time-consuming to prepare.

Because CMOS integrated circuits are used, the supply voltage can be any value between 5 and 18 V, a range suitable for most applications. The current drain for the alarm is only 30 mA and can be safely drawn from most clock power supplies.  $\diamond$



## PARTS LIST

C1, C2, C4—0.05- $\mu$ F capacitor  
 C3—1- $\mu$ F, 35-V electrolytic  
 IC1—4027 CMOS dual JK flip-flop  
 IC2—556 dual timer  
 Q1—2N4401 transistor  
 R1, R6, R7—10-kilohm, 1/4-W resistor  
 R2 through R5, R8—100-kilohm, 1/4-W resistor  
 R9—2.2-kilohm, 1/4-W resistor  
 R10—See text  
 S1—Normally open pushbutton switch  
 SPKR—8-ohm speaker  
 Misc.—Mounting hardware, perf board, IC sockets, etc.