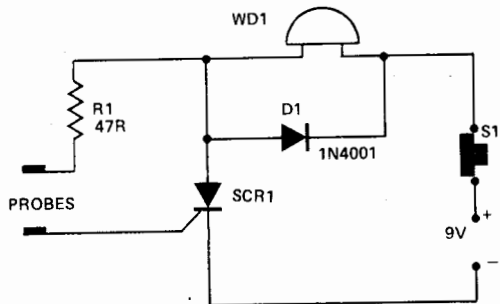


WATER LEVEL INDICATOR



This simple circuit provides an audible warning of the liquid level between the probes a current is

in a tank or alternatively may be used as a touch or rain alarm. When a liquid is present between the probes a current is allowed to flow, limited by R1, which triggers the thyristor on. The current drawn by the warning device WD1 is above the holding current of the thyristor alarm and so the alarm continues to sound. R1 should be chosen to suit the thyristor used, D1 provides protection from current surges. The circuit may be reset by pressing S1 which is a push to break type, SCR1 should be a 25V low current type.